



**Price**  
**£500,000**

**Freehold**

4x  2x  3x 

**Barber Close,  
Maidenbower, Crawley,  
West Sussex, RH10**

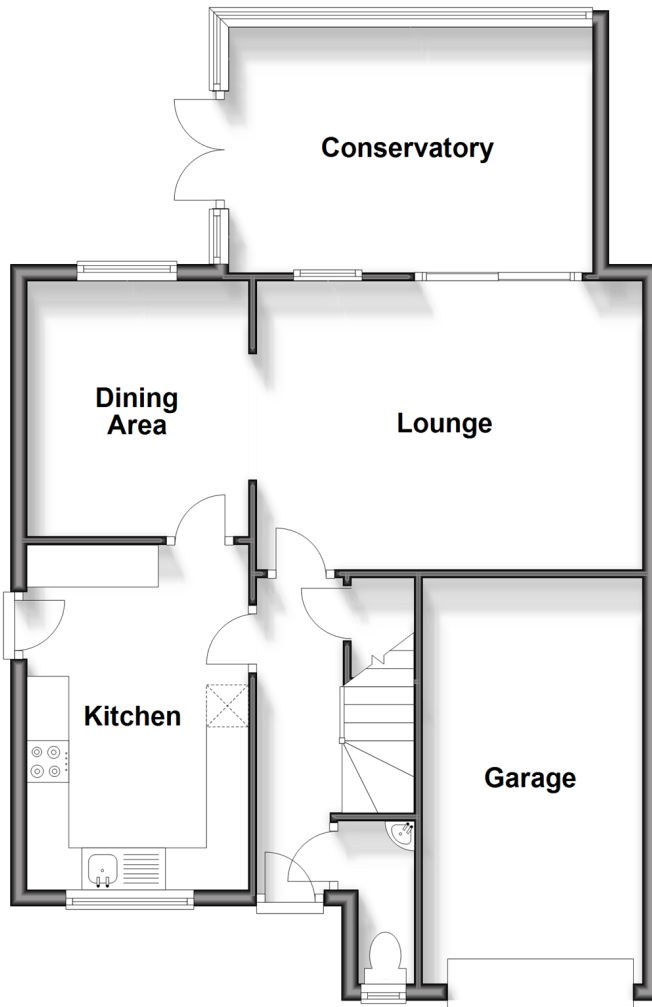
**OVER 60?**

Secure this property  
for up to **59% less!**

**cubitt & west**  
Helping you move forwards

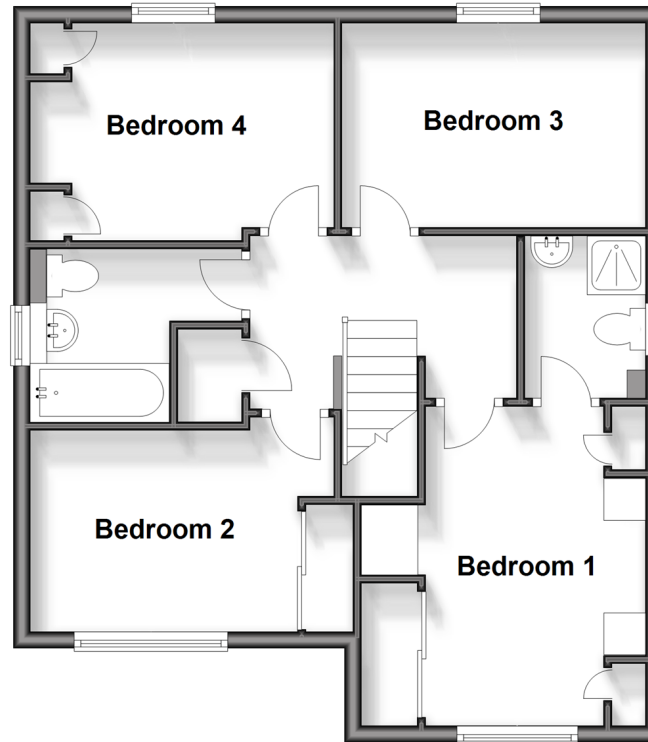
## Ground Floor

Approx. 70.5 sq. metres (759.1 sq. feet)



## First Floor

Approx. 58.1 sq. metres (625.5 sq. feet)



## Accommodation

### GROUND FLOOR

Entrance Hall

Downstairs Cloakroom

Lounge: 15'1 x 10'8 (4.60m x 3.25m)

Dining Area: 10'1 x 8'7 (3.08m x 2.62m)

Kitchen : 13'4 x 8'3 (4.07m x 2.52m)

Conservatory: 17'6 x 9'6 (5.34m x 2.90m)

### FIRST FLOOR

Landing

Bedroom 1: 12'9 x 9'3 (3.89m x 2.82m)

En Suite : 6'3 x 5'4 (1.91m x 1.63m)

Bedroom 2: 12'2 x 8'3 (3.71m x 2.52m)

Bedroom 3: 10'5 x 8'6 (3.18m x 2.59m)

Bedroom 4: 11'7 x 8'4 (3.53m x 2.54m)

Bathroom : 6'5 x 5'7 (1.96m x 1.70m)

### OUTSIDE

Front Garden

Rear Garden

Driveway

Garage



## Main features

- No chain
- Spacious detached house with secluded garden and side access
- Garage and driveway for multiple cars
- Large conservatory
- Located in popular Maidenbower community



### Nearest Schools

Primary Schools: Maidenbower Junior School 0.8 miles, Oaks Primary, The 0.8 miles, St Andrew's CofE Primary 0.8 miles

Secondary Schools: Oriel High School 0.5 miles, Thomas



### Transport Information

Train Stations: Three Bridges 1.4 miles, Crawley 1.5 miles, Ifield 2.8 miles



### Address

Barber Close, Maidenbower, Crawley, West Sussex, RH10



### Directions

For directions to this property please contact us.



**cubitt&west**  
Helping you move forwards

Call Crawley Branch 01293 522233 ■ [cubittandwest.co.uk](http://cubittandwest.co.uk)



- Legal advice should be taken to verify fixtures/fittings, planning, alterations and/or lease details
- Appliances & services are untested, dimensions are approximate and floor plans are not to scale
- Through a Homewise Home For Life Plan people aged 60+ can secure this property for up to 59% less, by purchasing a Lifetime Lease.



20419195/20241109/SS/SB