

OVER 60?

Secure this property
for up to **59% less!**



Price

£400,000

Freehold

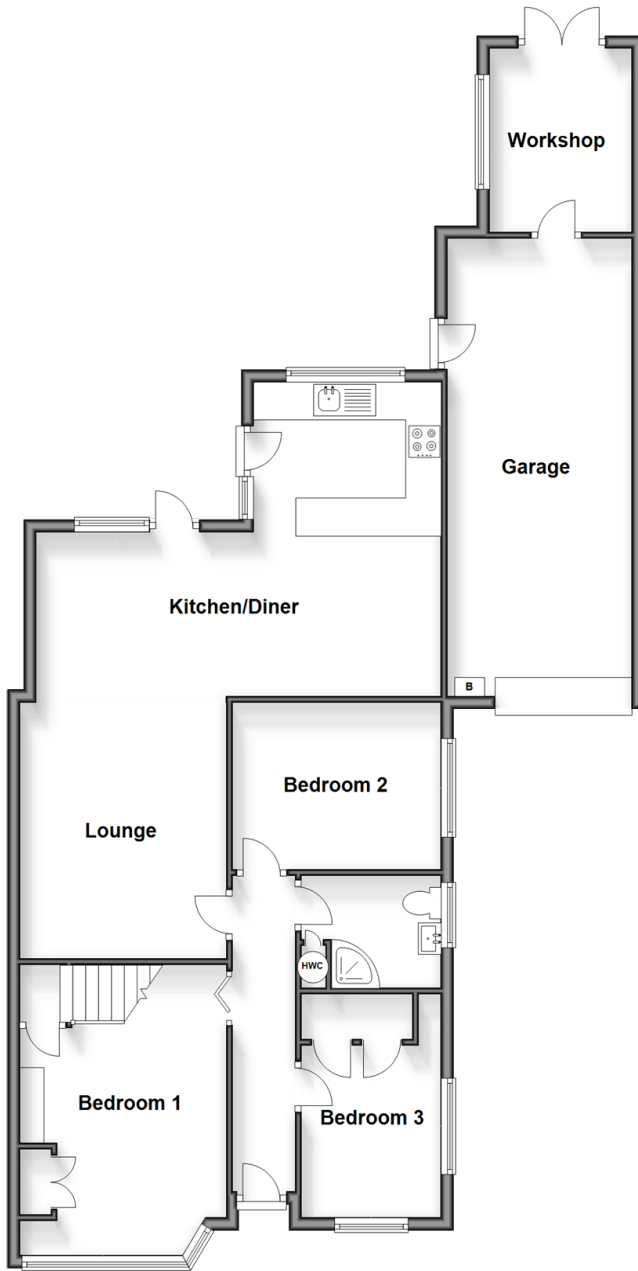
3x  1x  1x 

Wordsworth Close, Pound Hill, Crawley,
West Sussex, RH10

cubitt & west
Helping you move forwards

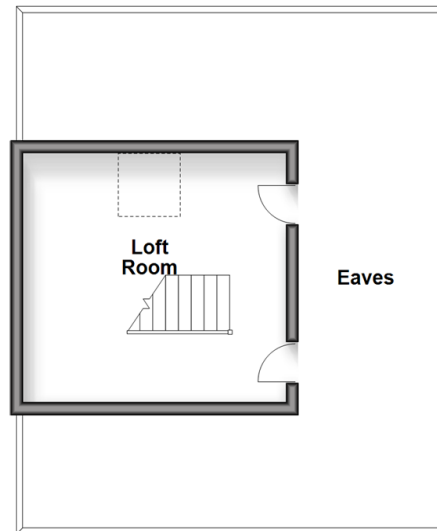
Ground Floor

Approx. 110.6 sq. metres (1190.0 sq. feet)



First Floor

Approx. 16.8 sq. metres (180.8 sq. feet)



Accommodation

GROUND FLOOR

Entrance Hall

Lounge: 22'5 x 11'0 (6.84m x 3.36m)

Kitchen/Diner: 15'11 x 10'0 (4.85m x 3.05m)

Bedroom 1: 15'3 (4.65m) narrowing to 11'10 (3.61m) x 10'11 (3.33m)

Bedroom 2: 11'3 x 8'8 (3.43m x 2.64m)

Bedroom 3: 11'8 x 7'3 (3.56m x 2.21m)

Shower Room: 7'3 x 5'11 (2.21m x 1.80m)

FIRST FLOOR

Loft Room: 14'2 x 13'0 (4.32m x 3.97m)

OUTSIDE

Front Garden

Rear Garden

Driveway

Garage : 23'11 x 9'9 (7.29m x 2.97m)

Workshop : 9'4 x 7'5 (2.85m x 2.26m)



Main features

- Extended semi detached bungalow
- Quiet cul de sac location
- Loft room used as a hobby room and accessed off bedroom one
- Open plan living with spacious lounge and kitchen/diner
- Just a short walk to Three Bridges railway station, local shops and popular schools



Nearest Schools

Primary Schools: Milton Mount Primary 0.5 miles, Pound Hill Junior School, Crawley 0.6 miles, Three Bridges Junior School 1.1 miles

Secondary Schools: Hazelwick School 1.3 miles, Oriel High



Transport Information

Train Stations: Three Bridges 0.4 miles, Crawley 2.2 miles, Horley 3.2 miles



Address

Wordsworth Close, Pound Hill, Crawley, West Sussex, RH10



Directions

For directions to this property please contact us.



cubitt&west
Helping you move forwards

Call Crawley Branch 01293 522233 ■ cubittandwest.co.uk



■ Legal advice should be taken to verify fixtures/fittings, planning, alterations and/or lease details ■ Appliances & services are untested, dimensions are approximate and floor plans are not to scale
■ Through a Homewise Home For Life Plan people aged 60+ can secure this property for up to 59% less, by purchasing a Lifetime Lease.

EPC RATING

CURRENT: E(43) POTENTIAL: C(78)

20419901/20241116/SS/DC