



Price
£375,000

Freehold

4x  1x  1x 

**Mannings Close,
Crawley, West Sussex,
RH10**

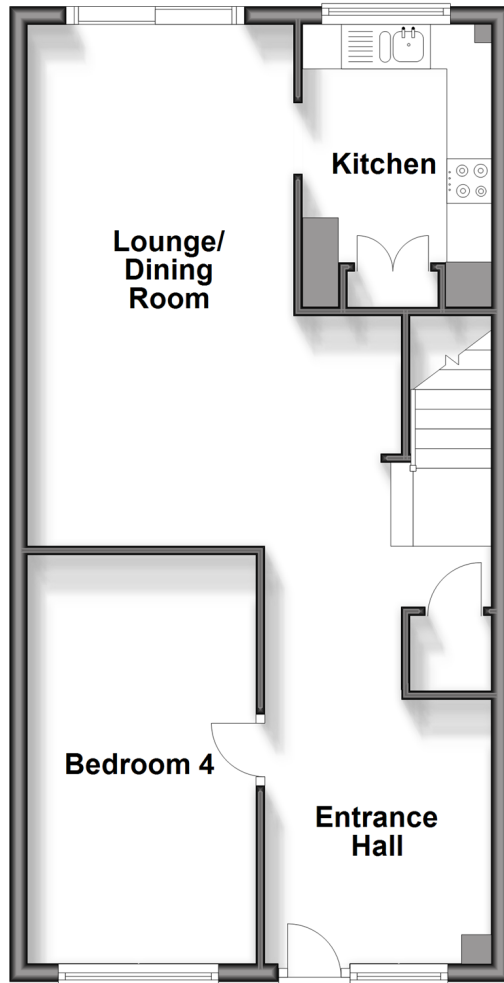
OVER 60?

Secure this property
for up to **59% less!**

cubitt & west
Helping you move forwards

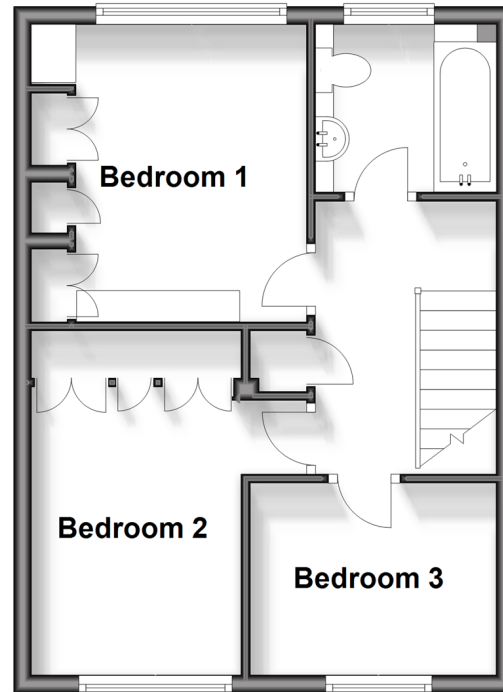
Ground Floor

Approx. 54.9 sq. metres (591.0 sq. feet)



First Floor

Approx. 38.0 sq. metres (409.5 sq. feet)



Accommodation

GROUND FLOOR

Entrance Hall

Lounge/Dining Room: 19'4 (5.90m) x 14'2 (4.32m) narrowing to 9'9 (2.97m)

Kitchen: 9'8 x 6'11 (2.95m x 2.11m)

Bedroom 4: 15'0 x 8'5 (4.58m x 2.57m)

FIRST FLOOR

Landing

Bedroom 1: 12'9 (3.89m) narrowing to 10'9 (3.28m) x 7'9 (2.36m)

Bedroom 2: 11'0 x 10'2 (3.36m x 3.10m)

Bedroom 3: 9'0 x 7'1 (2.75m x 2.16m)

Bathroom: 6'8 x 6'2 (2.03m x 1.88m)

OUTSIDE

Rear Garden

Driveway



Main features

- Extended staggered terraced home
- Re-fitted kitchen and bathroom
- Secluded rear garden
- Open plan lounge/dining room with patio doors to the rear garden
- Versatile accommodation with a optional ground floor bedroom

Nearest Schools

Primary Schools: Milton Mount Primary 0.3 miles, Pound Hill Junior School, Crawley 0.7 miles, Three Bridges Junior School 1.4 miles

Secondary Schools: Hazelwick School 0.8 miles, Oriel High

Transport Information

Train Stations: Three Bridges 0.9 miles, Crawley 2.0 miles, Gatwick Airport 2.0 miles

Address

Mannings Close, Crawley, West Sussex, RH10

Directions

For directions to this property please contact us.



cubitt&west
Helping you move forwards

Call Crawley Branch 01293 522233 ■ cubittandwest.co.uk



- Legal advice should be taken to verify fixtures/fittings, planning, alterations and/or lease details
- Appliances & services are untested, dimensions are approximate and floor plans are not to scale
- Through a Homewise Home For Life Plan people aged 60+ can secure this property for up to 59% less, by purchasing a Lifetime Lease.

EPC RATING

CURRENT: C(72) POTENTIAL: B(87)

20418859/20240930/SS/DC