



Price
£400,000

Freehold

3x  1x  2x 

**Chaucer Road, Pound
Hill, Crawley, West
Sussex, RH10**

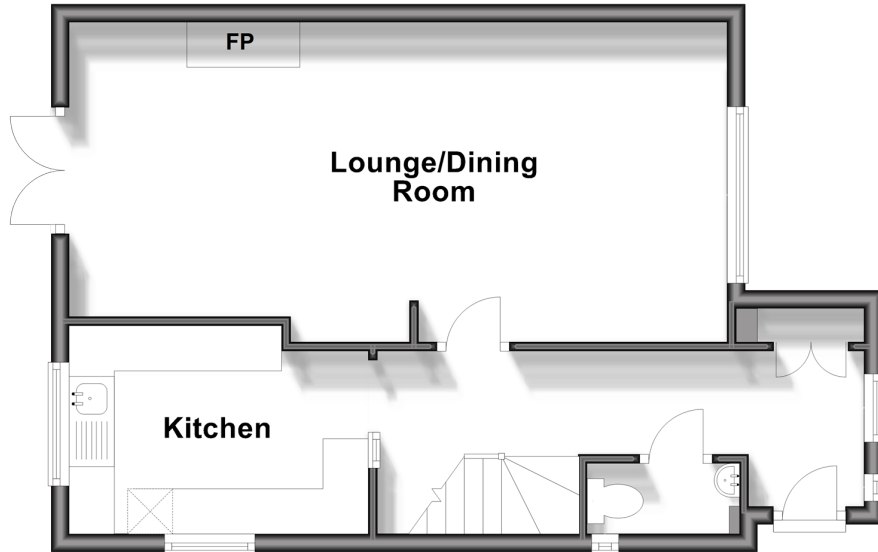
OVER 60?

Secure this property
for up to **59% less!**

cubitt & west
Helping you move forwards

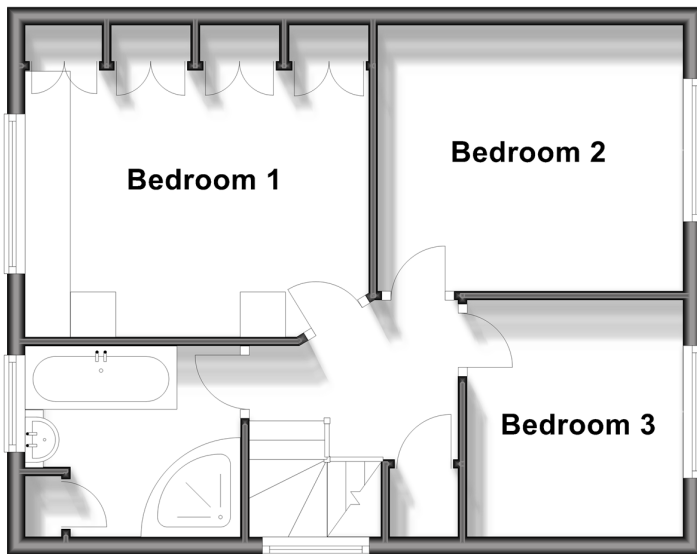
Ground Floor

Approx. 44.7 sq. metres (480.6 sq. feet)



First Floor

Approx. 41.3 sq. metres (444.4 sq. feet)



Accommodation

GROUND FLOOR

Entrance Porch

Entrance Hall

Downstairs Cloakroom

Kitchen : 11'0 x 7'7 (3.36m x 2.31m)

Lounge/ Dining Room: 24'1 (7.35m) x 11'2 (3.41m) narrowing to 10'8 (3.25m)

FIRST FLOOR

Landing

Bedroom 1: 12'5 x 11'6 (3.79m x 3.51m)

Bedroom 2: 11'2 x 9'9 (3.41m x 2.97m)

Bedroom 3: 8'10 x 8'1 (2.69m x 2.47m)

Bathroom : 7'10 x 6'10 (2.39m x 2.08m)

OUTSIDE

Front Garden

Rear Garden

Driveway

Garage: 20'4 x 8'11 (6.20m x 2.72m)



Main features

- No upper chain
- Semi detached house
- Re-fitted bathroom with separate shower cubicle
- Just a short walk to local schools, shops and Three Bridges Railway station
- Secluded rear garden, garage and off road parking



Nearest Schools

Primary Schools: Milton Mount Primary 0.1 miles, Pound Hill Junior School, Crawley 0.3 miles, Three Bridges Junior School 0.9 miles

Secondary Schools: Hazelwick School 0.4 miles, Oriel High



Transport Information

Train Stations: Three Bridges 0.4 miles, Crawley 1.5 miles, Gatwick Airport 2.2 miles



Address

Chaucer Road, Pound Hill, Crawley, West Sussex, RH10



Directions

For directions to this property please contact us.



cubitt&west
Helping you move forwards

Call Crawley Branch 01293 522233 ■ [cubittandwest.co.uk](https://www.cubittandwest.co.uk)



- Legal advice should be taken to verify fixtures/fittings, planning, alterations and/or lease details
- Appliances & services are untested, dimensions are approximate and floor plans are not to scale
- Through a Homewise Home For Life Plan people aged 60+ can secure this property for up to 59% less, by purchasing a Lifetime Lease.



20419840/20241019/SS/DC