



Guide Price
£460,000

Freehold

4x  1x  2x 

**Lambourne Close,
Furnace Green, Crawley,
West Sussex, RH10**

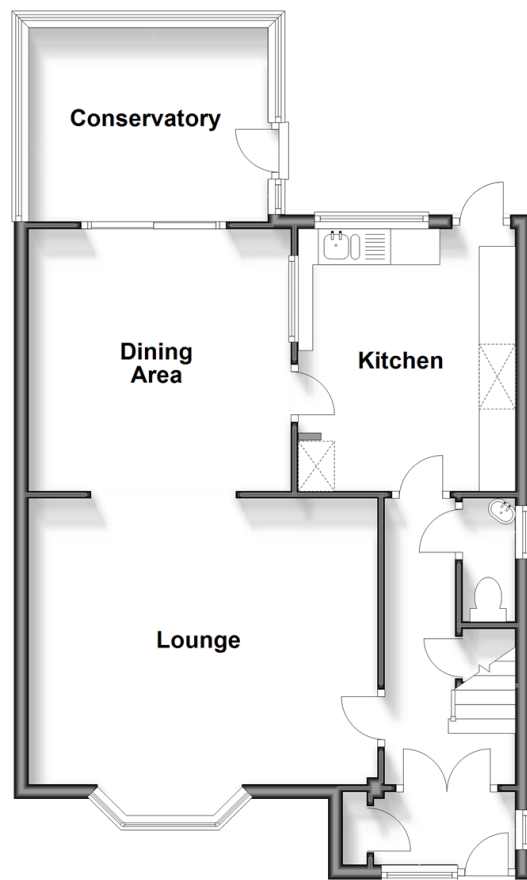
OVER 60?

Secure this property
for up to **59% less!**

cubitt&west
Helping you move forwards

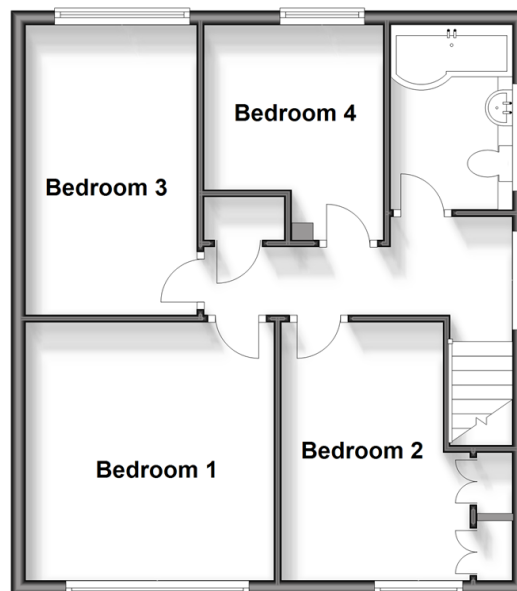
Ground Floor

Approx. 64.3 sq. metres (691.7 sq. feet)



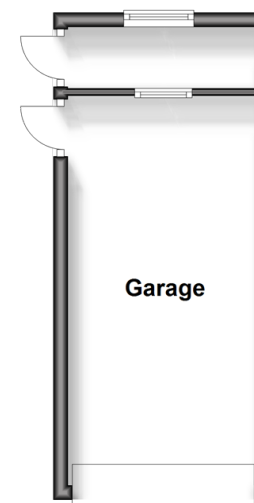
First Floor

Approx. 52.1 sq. metres (560.5 sq. feet)



Outbuilding

Approx. 16.8 sq. metres (180.8 sq. feet)



Accommodation

GROUND FLOOR

Entrance Porch

Entrance Hall

Lounge: 15'10 x 13'2 (4.83m x 4.02m)

Dining Area: 12'0 x 11'10 (3.66m x 3.61m)

Conservatory: 9'9 x 8'10 (2.97m x 2.69m)

Downstairs Cloakroom

Kitchen : 12'0 x 9'11 (3.66m x 3.02m)

FIRST FLOOR

Landing

Bedroom 1: 11'9 x 11'3 (3.58m x 3.43m)

Bedroom 2: 11'10 (3.61m) x 8'6 (2.59m) narrowing to 7'6 (2.29m)

Bedroom 3: 13'4 x 7'10 (4.07m x 2.39m)

Bedroom 4: 10'7 (3.23m) narrowing to 7'7 (2.31m) x 8'2 (2.49m)

Bathroom : 8'5 x 5'6 (2.57m x 1.68m)

OUTSIDE

Front Garden

Rear Garden

Driveway

Garage



Main features

- Extended semi detached house
- Quiet cul de sac
- Open plan lounge, dining area and a conservatory
- Secluded rear garden with large driveway and garage
- Short walk to local shops, schools and public transport



Nearest Schools

Primary Schools: St Andrew's CofE Primary 0.1 miles, Oaks Primary, The 0.3 miles, St Francis of Assisi Catholic Primary, Crawley 0.4 miles

Secondary Schools: Oriel High School 0.7 miles, Thomas



Transport Information

Train Stations: Crawley 0.6 miles, Three Bridges 0.8 miles, Ifield 1.9 miles



Address

Lambourne Close, Furnace Green, Crawley, West Sussex, RH10



Directions

For directions to this property please contact us.



cubitt&west
Helping you move forwards

Call Crawley Branch 01293 522233 ■ cubittandwest.co.uk



■ Legal advice should be taken to verify fixtures/fittings, planning, alterations and/or lease details ■ Appliances & services are untested, dimensions are approximate and floor plans are not to scale
■ Through a Homewise Home For Life Plan people aged 60+ can secure this property for up to 59% less, by purchasing a Lifetime Lease.



20414048/20250312/TH/DC