



Price
£350,000

Freehold

3x  1x  1x 

**Burrell Court, Twyne
Close, Crawley, West
Sussex, RH11**

OVER 60?

Secure this property
for up to **59% less!**

cubitt&west
Helping you move forwards

Accommodation

GROUND FLOOR

Entrance Hall

Downstairs Cloakroom

Lounge: 17'10 x 15'4 (5.44m x 4.68m)
narrowing to 10'1 x 11'5 (3.08m x 3.48m)

Kitchen : 11'5 x 10'8 (3.48m x 3.25m)

Conservatory: 13'9 x 7'9 (4.19m x 2.36m)

FIRST FLOOR

Landing

Bedroom 1: 11'7 x 11'5 (3.53m x 3.48m)

Bedroom 2: 14'9 x 8'4 (4.50m x 2.54m)

Bedroom 3: 11'8 x 6'4 (3.56m x 1.93m)

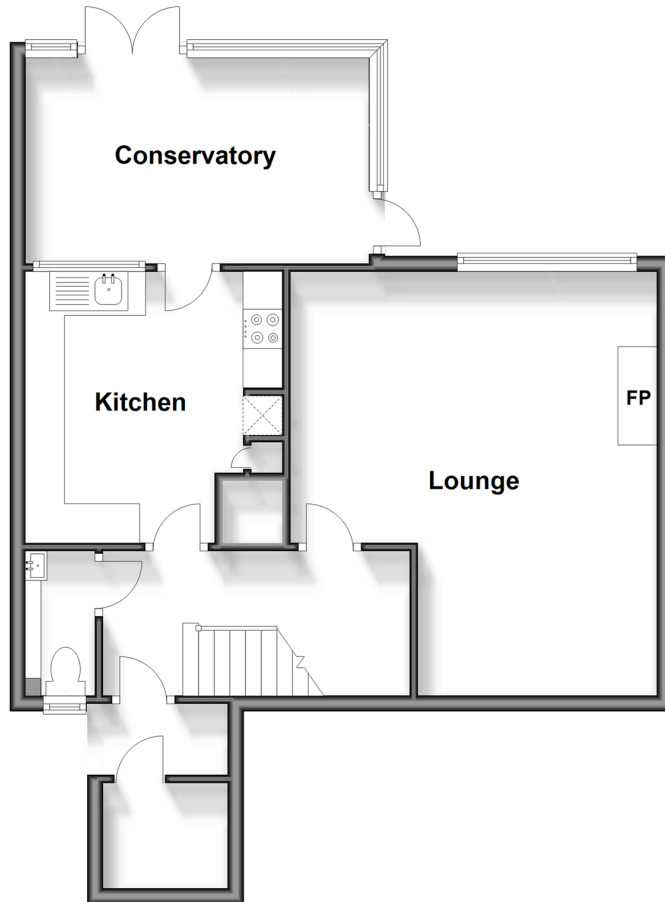
Bathroom: 6'10 x 6'2 (2.08m x 1.88m)

OUTSIDE

Rear Garden

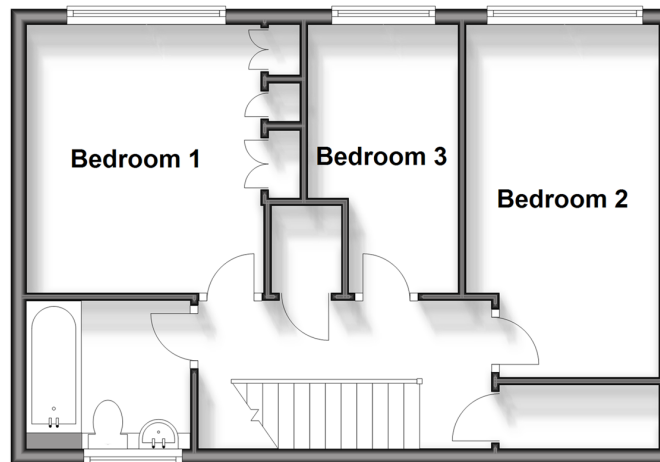
Ground Floor

Approx. 59.4 sq. metres (638.9 sq. feet)



First Floor

Approx. 43.5 sq. metres (468.5 sq. feet)





Main features

- Well presented corner terraced house
- Quiet cul de sac
- Double glazed conservatory and large lounge/diner
- Beautiful re-fitted kitchen with integrated appliances, re fitted bathroom and cloakroom
- Radiator heating and owned solar panels for the electricity



Nearest Schools

Primary Schools: Bewbush Community Primary 0.2 miles, Gossops Green Primary 0.2 miles, Waterfield Primary 0.3 miles

Secondary Schools: Holy Trinity CofE Secondary School,



Transport Information

Train Stations: Ifield 0.7 miles, Crawley 1.4 miles, Faygate 2.0 miles



Address

Burrell Court, Twyne Close, Crawley, West Sussex, RH11



Directions

For directions to this property please contact us.



cubitt&west
Helping you move forwards

Call Crawley Branch 01293 522233 ■ cubittandwest.co.uk



■ Legal advice should be taken to verify fixtures/fittings, planning, alterations and/or lease details ■ Appliances & services are untested, dimensions are approximate and floor plans are not to scale
■ Through a Homewise Home For Life Plan people aged 60+ can secure this property for up to 59% less, by purchasing a Lifetime Lease.



20419844/20240601/SS/DC