



Price

£560,000

Freehold

4x  3x  2x 

**Sedgefield Close,
Crawley, West Sussex,
RH10**

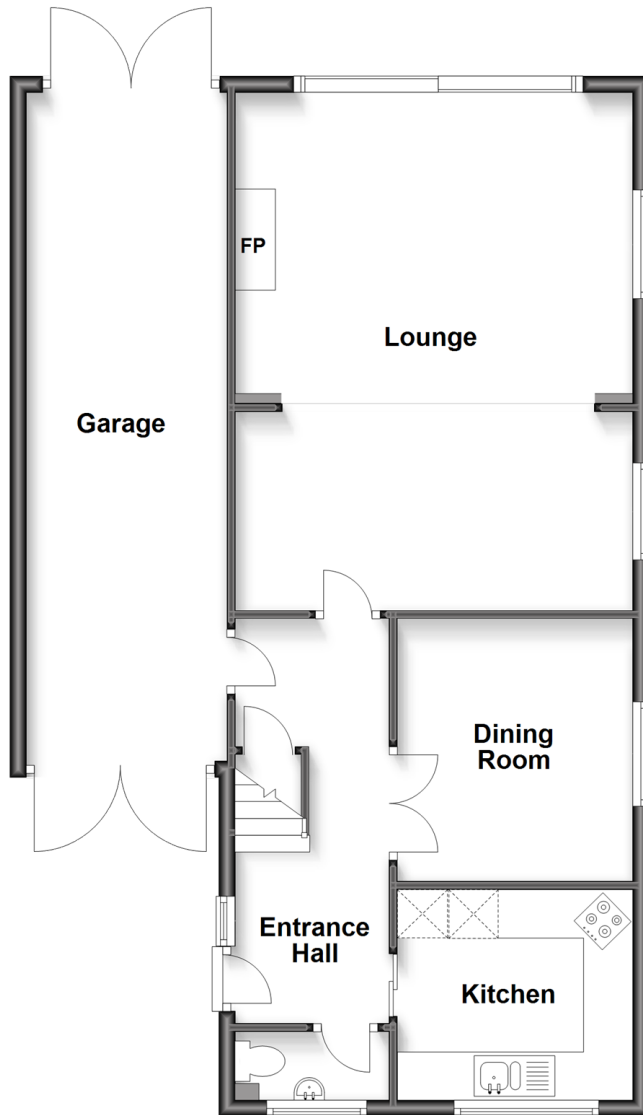
OVER 60?

Secure this property
for up to **59% less!**

cubitt&west
Helping you move forwards

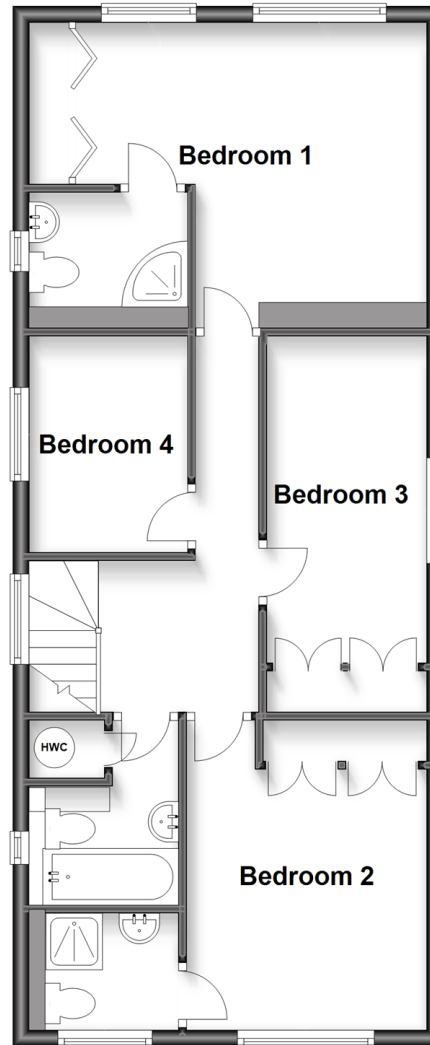
Ground Floor

Approx. 82.7 sq. metres (890.4 sq. feet)



First Floor

Approx. 61.5 sq. metres (662.4 sq. feet)



Accommodation

GROUND FLOOR

Entrance Hall

Cloakroom

Lounge: 21'2 x 16'5 (6.46m x 5.01m)

Dining Room : 10'8 x 9'8 (3.25m x 2.95m)

Kitchen : 9'6 x 8'7 (2.90m x 2.62m)

FIRST FLOOR

Landing

Bedroom 1: 16'0 x 11'10 (4.88m x 3.61m)
narrowing to 9'7 x 6'7 (2.92m x 2.01m)

En-suite Shower Room: 6'3 x 4'8 (1.91m x 1.42m)

Bedroom 2: 12'6 x 9'8 (3.81m x 2.95m)

En-suite Shower Room: 5'6 x 4'9 (1.68m x 1.45m)

Bedroom 3: 15'4 (4.68m) narrowing to 13'5 (4.09m) x 6'7 (2.01m)

Bedroom 4: 9'0 x 6'4 (2.75m x 1.93m)

Bathroom

OUTSIDE

Front Garden

Rear Garden

Garage: 27'5 x 8'4 (8.36m x 2.54m)

Car Port

Driveway



Main features

- Extended and improved detached house
- Large lounge and separate dining room
- Two en-suite shower rooms, a family bathroom
- Driveway for several vehicles
- Local to schools and Worth Park Gardens



Nearest Schools

Primary Schools: Pound Hill Junior School, Crawley 0.5 miles, Milton Mount Primary 0.7 miles, Maidenbower Junior School 0.9 miles
Secondary Schools: Hazelwick School 1.1 miles, Oriel High School 1.2 miles, Worth School 2.1 miles



Transport Information

Train Stations: Three Bridges 0.8 miles, Crawley 1.9 miles, Gatwick Airport 2.6 miles



Address

Sedgefield Close, Crawley, West Sussex, RH10



Directions

For directions to this property please contact us.



cubitt&west
Helping you move forwards

Call Crawley Branch 01293 522233 ■ cubittandwest.co.uk



■ Legal advice should be taken to verify fixtures/fittings, planning, alterations and/or lease details ■ Appliances & services are untested, dimensions are approximate and floor plans are not to scale
■ Through a Homewise Home For Life Plan people aged 60+ can secure this property for up to 59% less, by purchasing a Lifetime Lease.



20418953/20230609/SS/DC