



Guide Price
£325,000

Leasehold

3x  1x  2x 

Loretto Close,
Cranleigh, Surrey, GU6

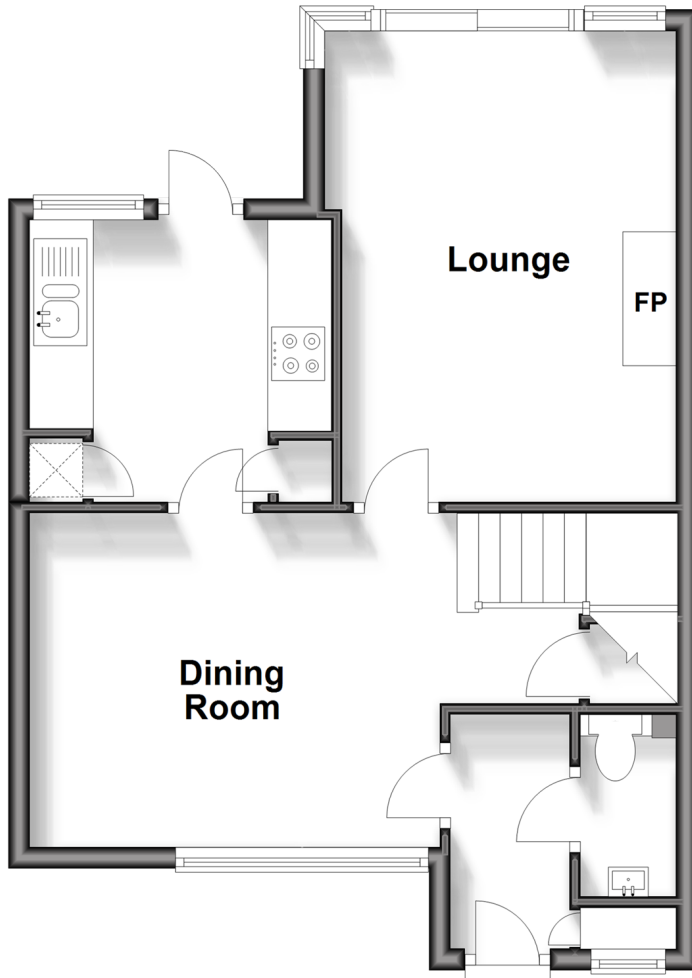
OVER 60?

Secure this property
for up to **59% less!**

cubitt & west
Helping you move forwards

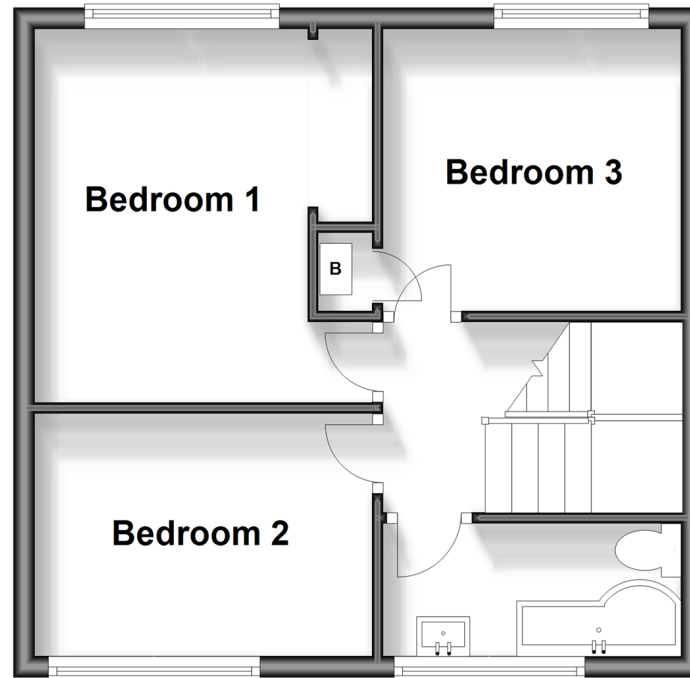
Ground Floor

Approx. 43.6 sq. metres (469.7 sq. feet)



First Floor

Approx. 36.4 sq. metres (392.0 sq. feet)



Accommodation

GROUND FLOOR

Entrance Hallway

Dining Room: 13'1 x 10'10 (3.99m x 3.30m)

Lounge: 14'2 x 9'11 (4.32m x 3.02m)

Kitchen: 9'6 x 8'3 (2.90m x 2.52m)

Cloakroom

FIRST FLOOR

Landing

Bedroom 1: 11'10 x 10'5 (3.61m x 3.18m)

Bedroom 2: 10'4 x 7'9 (3.15m x 2.36m)

Bedroom 3: 9'1 x 8'11 (2.77m x 2.72m)

Bathroom

OUTSIDE

Front Garden

Landscaped Rear Garden

Garage En Bloc



Main features

- Bright and spacious house on a popular residential road
- Downstairs cloakroom and family bathroom
- Parking with garage en bloc
- Landscaped private rear garden
- Within easy reach of local schools, shops and village High Street



Nearest Schools

Primary Schools: Park Mead 0.1 miles, St Cuthbert Mayne Catholic 0.8 miles, Cranleigh C of E 1.2 miles

Secondary Schools: Glebelands School 1.2 miles, Cranleigh School (private) 2.0 miles



Transport Information

Train Stations: Gomshall 6.9 miles, Ockley 8.0 miles, Shalford 8.0 miles, Guildford 10 miles



Address

Loretto Close, Cranleigh, Surrey, GU6



Directions

For directions to this property please contact us.



cubitt&west
Helping you move forwards

Call Cranleigh Branch 01483 271567 ■ [cubittandwest.co.uk](https://www.cubittandwest.co.uk)



- Legal advice should be taken to verify fixtures/fittings, planning, alterations and/or lease details
- Appliances & services are untested, dimensions are approximate and floor plans are not to scale
- Through a Homewise Home For Life Plan people aged 60+ can secure this property for up to 59% less, by purchasing a Lifetime Lease.

EPC RATING	CURRENT:	POTENTIAL:

20306622/20241012/CH/KAB