



Price

£475,000

Leasehold

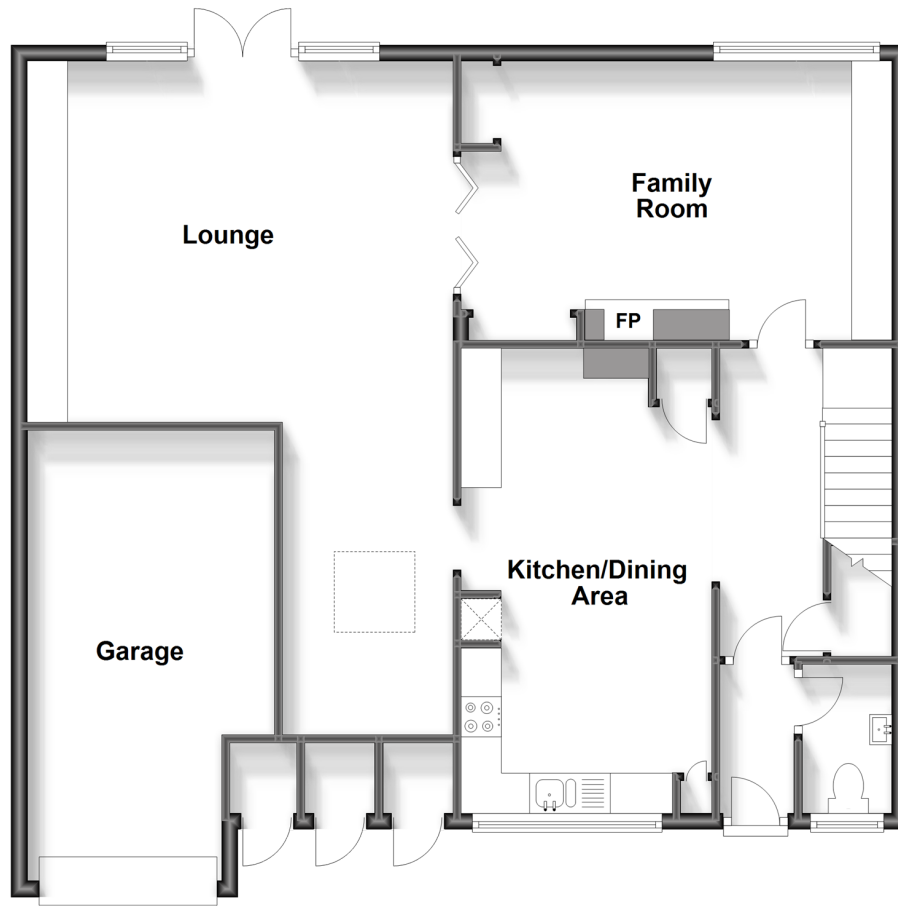
4x  1x  3x 

**Fettes Road, Cranleigh,
Surrey, GU6**

cubitt & west
Helping you move forwards

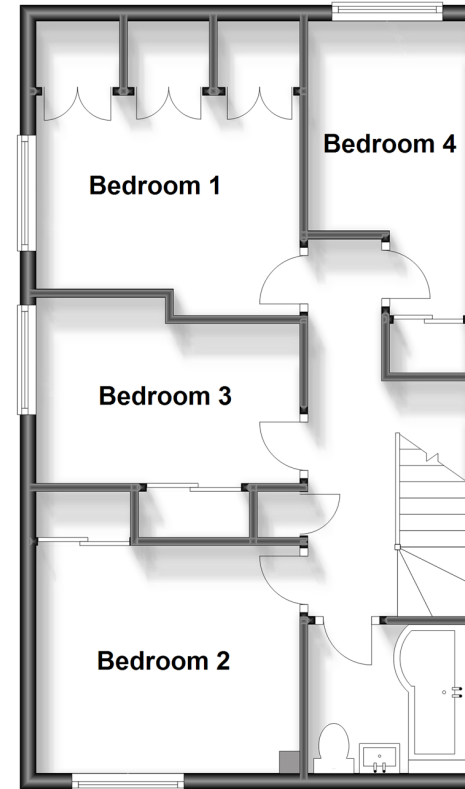
Ground Floor

Approx. 102.5 sq. metres (1103.7 sq. feet)



First Floor

Approx. 49.2 sq. metres (530.0 sq. feet)



Accommodation

GROUND FLOOR

Entrance Hallway

Kitchen/Dining Area: 17'11 x 10'2 (5.46m x 3.10m)

Lounge: 16'10 x 16'0 (5.13m x 4.88m)

Family Room: 17'8 x 10'0 (5.39m x 3.05m)

Cloakroom

FIRST FLOOR

Landing

Bedroom 1: 10'3 x 9'0 (3.13m x 2.75m)

Bedroom 2: 10'4 x 8'11 (3.15m x 2.72m)

Bedroom 3: 10'3 x 7'7 (3.13m x 2.31m)

Bedroom 4: 8'6 x 6'5 (2.59m x 1.96m)

Bathroom

OUTSIDE

Front Garden

Rear Garden

Driveway

Garage

Main features

- A great size family house
- Extended accommodation with lounge and separate family room
- Good size private garden, driveway parking and garage
- Very close to local schools and shops
- Short walk or bus ride into the centre of Cranleigh



Nearest Schools

Primary Schools: Park Mead Primary 433ft, St Cuthbert Mayne Catholic Primary 0.8miles, Cranleigh C of E Primary 1.2 miles

Secondary Schools: Glebelands School 1.2miles,



Transport Information

Train Stations: Gomshall 5.0 miles, Chilworth 5.6 miles, Ockley 5.7 miles



Address

Fettes Road, Cranleigh, Surrey, GU6



Directions

For directions to this property please contact us.

