



Price

£270,000

Leasehold

1x  1x  1x 

Bramley Vale, Cranleigh, Surrey, GU6

cubitt&west
Helping you move forwards



Main features

- A well presented ground floor apartment
- Shared Ownership price equates to 100% (a min of 25% is available)
- Juliet balcony with views over the communal gardens
- Allocated parking plus visitor parking

Accommodation

GROUND FLOOR

Entrance Hallway

Lounge / Diner: 13'6 x 13'1 (4.12m x 3.99m)

Kitchen: 9'1 x 8'8 (2.77m x 2.64m)

Bedroom: 13'1 x 10'8 (3.99m x 3.25m)

Bathroom

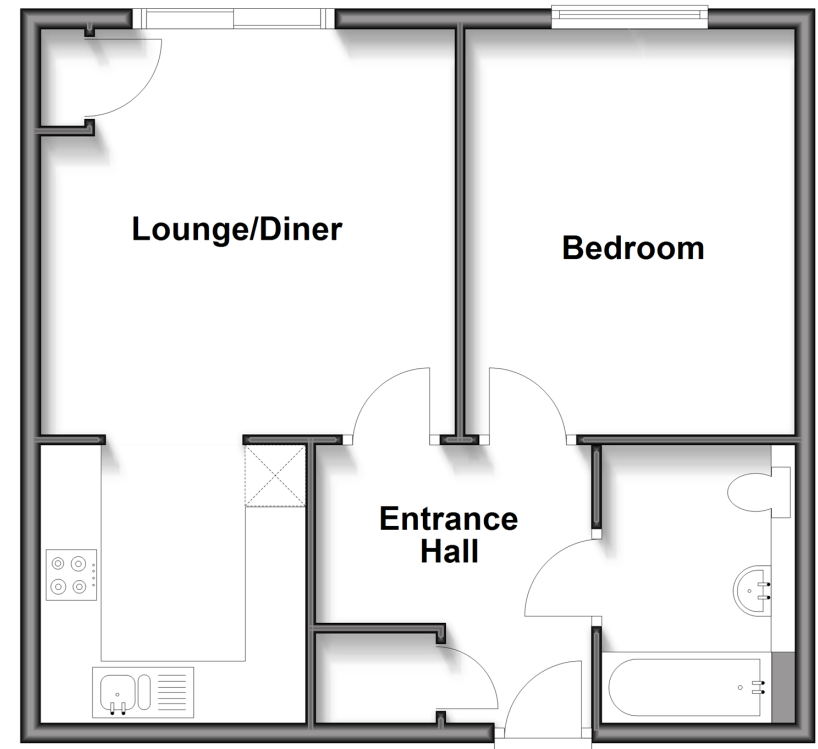
OUTSIDE

Allocated Parking

Communal Garden

Ground Floor

Approx. 51.1 sq. metres (550.4 sq. feet)



Call Cranleigh - 01483 271567 ■ cubittandwest.co.uk

- Legal advice should be taken to verify fixtures/fittings, planning, alterations and/or lease details
- Appliances & services are untested, dimensions are approximate and floor plans are not to scale



20306919/20250428/CH/KAB