



Guide Price
£550,000

Freehold

3x  1x  1x 

**Kilnfield Road,
Rudgwick, Horsham,
West Sussex, RH12**

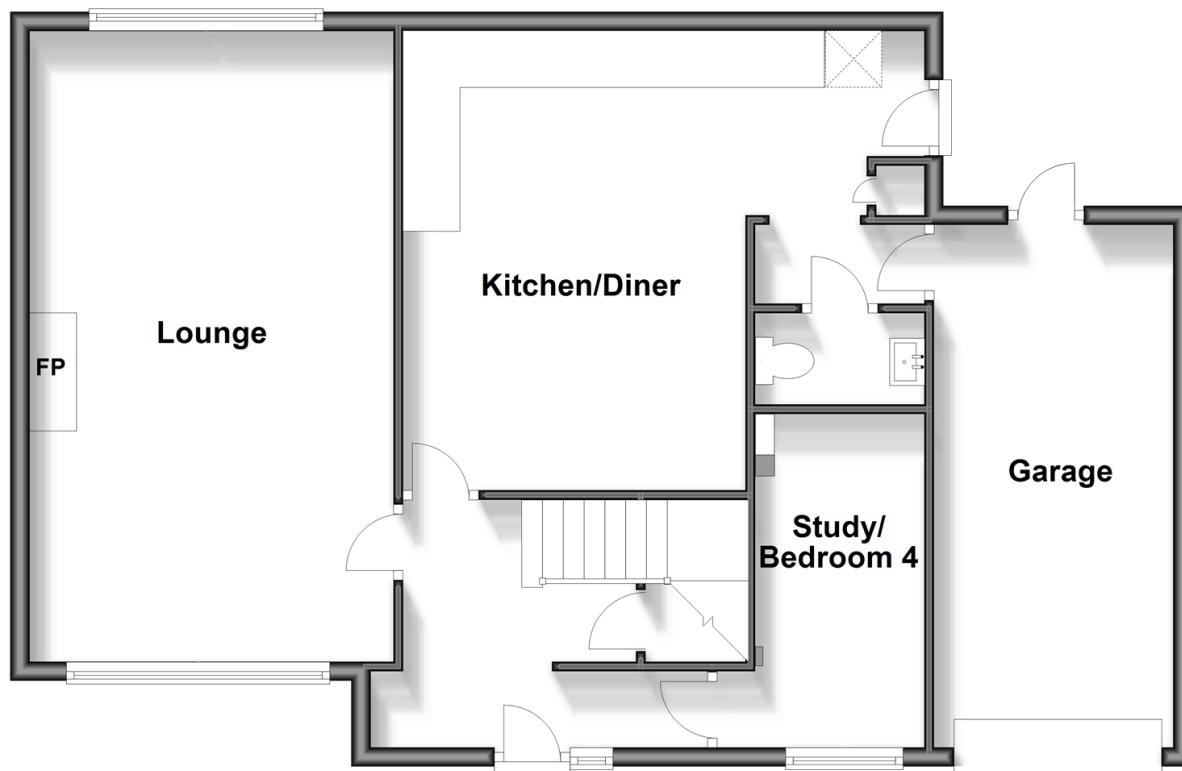
OVER 60?

Secure this property
for up to **59% less!**

cubitt&west
Helping you move forwards

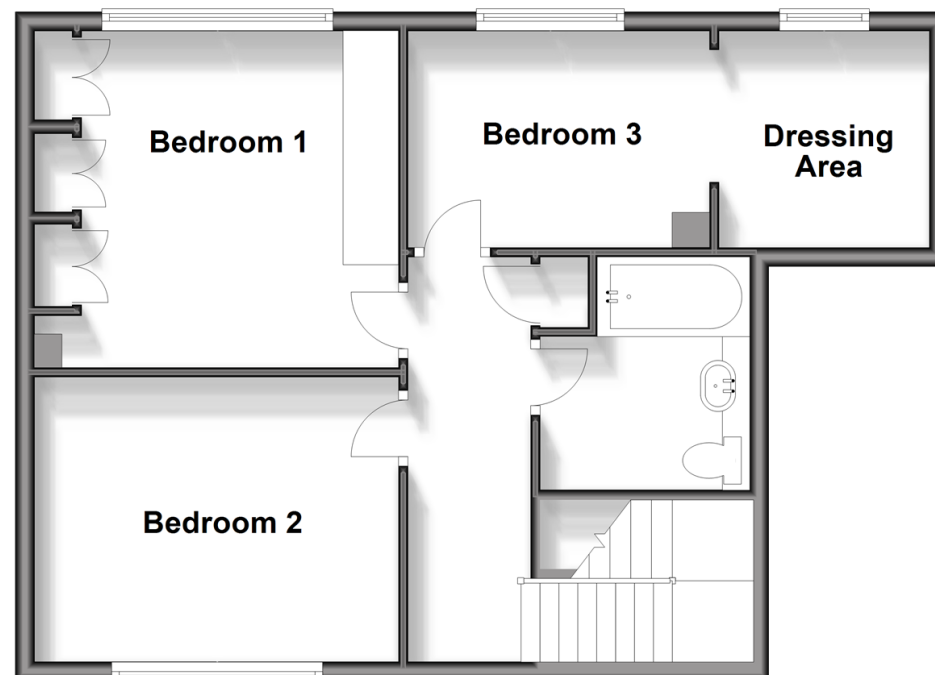
Ground Floor

Approx. 83.1 sq. metres (895.0 sq. feet)



First Floor

Approx. 54.9 sq. metres (591.1 sq. feet)



Accommodation

GROUND FLOOR

Entrance Hallway

Kitchen/Diner: 17'7 x 15'11 (5.36m x 4.85m)

Lounge: 22'0 x 12'6 (6.71m x 3.81m)

Study/Bedroom 4: 11'7 x 5'11 (3.53m x 1.80m)

Cloakroom

FIRST FLOOR

Landing

Bedroom 1: 11'10 x 11'3 (3.61m x 3.43m)

Bedroom 2: 12'6 x 9'10 (3.81m x 3.00m)

Bedroom 3: 6'10 x 6'8 (2.08m x 2.03m)

Dressing Area: 10'5 x 7'5 (3.18m x 2.26m)

Bathroom

OUTSIDE

Garage: 18'2 x 8'3 (5.54m x 2.52m)

Driveway

Front Garden

Rear Garden



Main features

- Spacious lounge plus a separate kitchen/dining room
- Downstairs study which could be used as a fourth bedroom
- Integral garage with ample off road parking
- Large private rear garden
- Close to local shop and school



Nearest Schools

Primary: Rudgwick 0.7 miles, Loxwood 4.1 miles, Warnham CofE 5.9 miles

Secondary: Farlington (private) 4.2 miles, Glebelands 5.8 miles, The Weald 6.2 miles, Cranleigh (private) 6.4 miles.



Transport Information

Train Stations: Horsham 8.2 miles, Warnham 8.6 miles, Ockley 9.6 miles.



Address

Kilnfield Road, Rudgwick, Horsham, West Sussex, RH12



Directions

For directions to this property please contact us.



cubitt&west
Helping you move forwards

Call Cranleigh Branch 01483 271567 ■ cubittandwest.co.uk



■ Legal advice should be taken to verify fixtures/fittings, planning, alterations and/or lease details ■ Appliances & services are untested, dimensions are approximate and floor plans are not to scale
■ Through a Homewise Home For Life Plan people aged 60+ can secure this property for up to 59% less, by purchasing a Lifetime Lease.



20306826/20241130/CH/RD