



Price

£650,000

Freehold

4x  2x  1x 

**Glebe Road, Cranleigh,
Surrey, GU6**

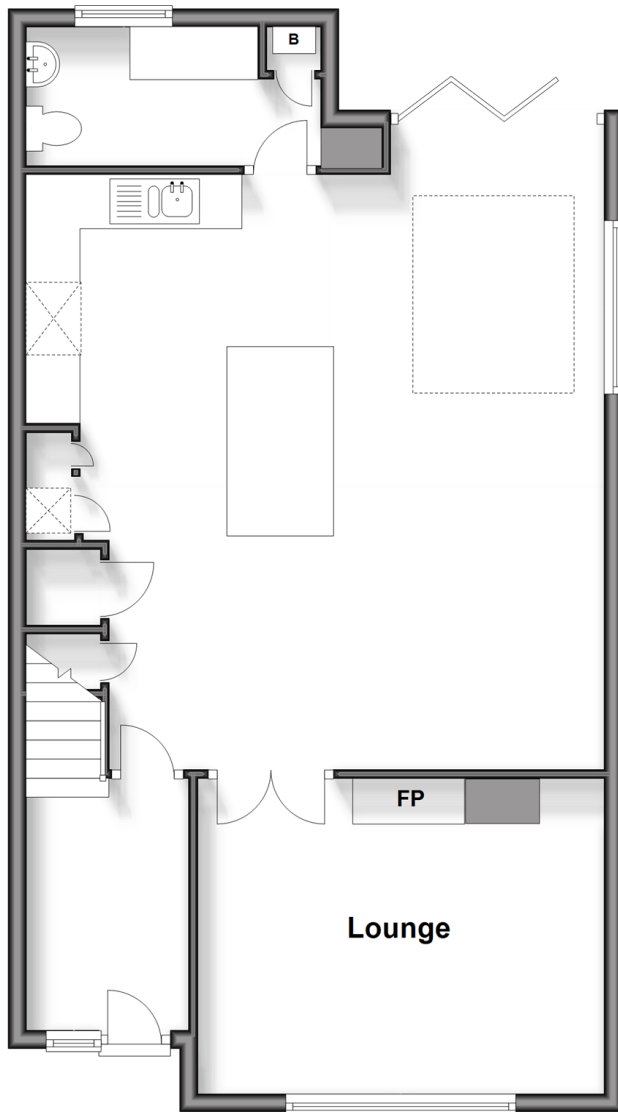
OVER 60?

Secure this property
for up to **59% less!**

cubitt&west
Helping you move forwards

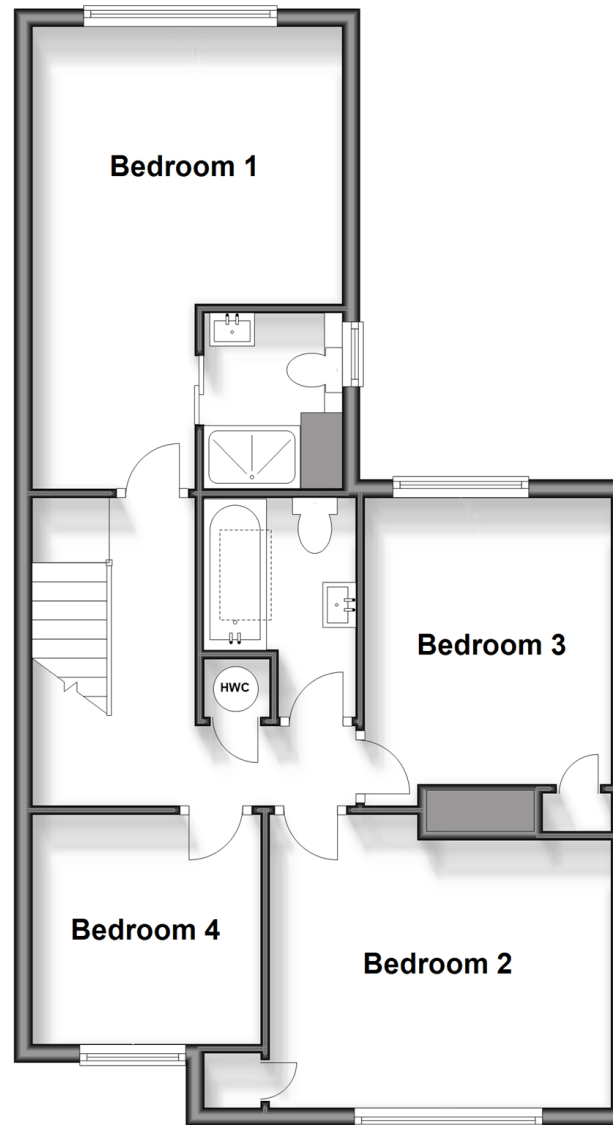
Ground Floor

Approx. 71.8 sq. metres (772.4 sq. feet)



First Floor

Approx. 60.6 sq. metres (652.1 sq. feet)



Accommodation

GROUND FLOOR

Entrance Hallway

Lounge: 15'10 x 11'6 (4.83m x 3.51m)

Kitchen: 22'0 x 18'5 (6.71m x 5.62m)

Utility Room/Cloakroom

FIRST FLOOR

Landing

Bedroom 1: 12'9 x 9'11 (3.89m x 3.02m)

En Suite Shower Room

Bedroom 2: 11'5 x 9'10 (3.48m x 3.00m)

Bedroom 3: 10'6 x 9'0 (3.20m x 2.75m)

Bedroom 4: 8'5 x 8'4 (2.57m x 2.54m)

Bathroom

OUTSIDE

Front Garden

Garage

Off Road Parking

Rear Garden



Main features

- Beautifully presented four bedroom semi detached family house
- Secluded sunny rear garden
- Downstairs cloakroom, utility room, en-suite and family bathroom
- Garage and plenty of off road parking
- Set in a popular residential area close to the village and local schools



Nearest Schools

Primary Schools: St Cuthbert Mayne Catholic 0.2 miles, Cranleigh C of E 0.3 miles, Park Mead 0.9 miles

Secondary Schools: Glebelands School 0.3 miles, Cranleigh School (private) 1.3 miles



Transport Information

Train Stations: Gomshall 7.1 miles, Shalford 7.4 miles, Chilworth 7.7 miles, Ockley 8.5 miles, Guildford 9.3 miles



Address

Glebe Road, Cranleigh, Surrey, GU6



Directions

For directions to this property please contact us.



cubitt&west
Helping you move forwards

Call Cranleigh Branch 01483 271567 ■ cubittandwest.co.uk



■ Legal advice should be taken to verify fixtures/fittings, planning, alterations and/or lease details ■ Appliances & services are untested, dimensions are approximate and floor plans are not to scale
■ Through a Homewise Home For Life Plan people aged 60+ can secure this property for up to 59% less, by purchasing a Lifetime Lease.



20305869/20250131/CH/KAB