



Price

£1,000,000

Freehold

4x  4x  5x 

Mapledrakes Road,
Ewhurst, Cranleigh,
Surrey, GU6

OVER 60?

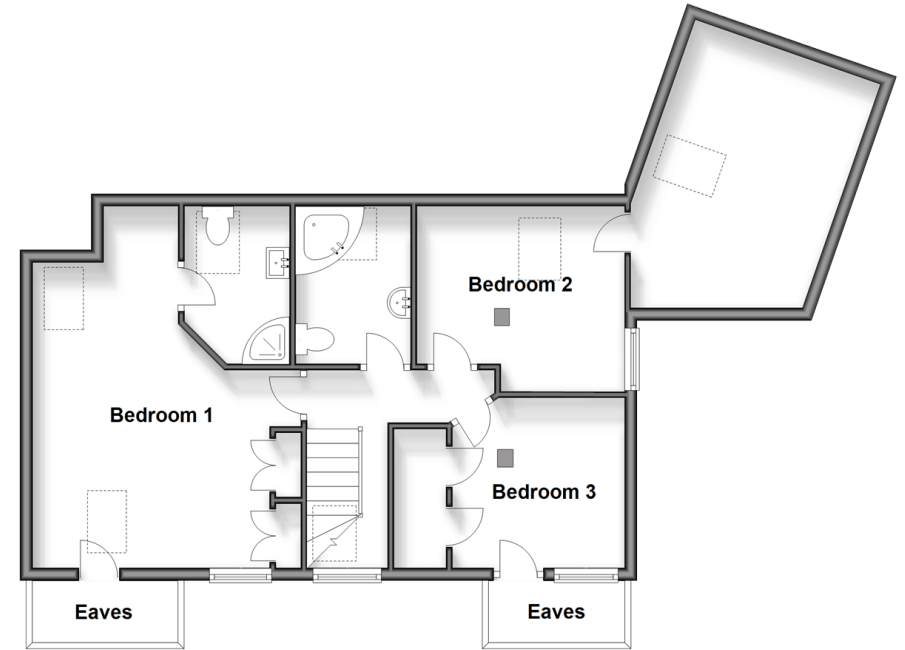
Secure this property
for up to **59% less!**

cubitt & west
Helping you move forwards

Ground Floor
Approx. 152.9 sq. metres (1645.6 sq. feet)



First Floor
Approx. 67.8 sq. metres (729.5 sq. feet)



Accommodation

GROUND FLOOR

Entrance Hallway
 Kitchen: 12'4 x 7'4 (3.76m x 2.24m)
 Kitchen / Dining Room: 26'5 x 15'0 (8.06m x 4.58m)
 Lounge: 15'2 x 12'5 (4.63m x 3.79m)
 Garden Room: 17'2 x 13'4 (5.24m x 4.07m)
 Study: 16'3 x 9'7 (4.96m x 2.92m)
 Bedroom 4: 12'10 x 8'4 (3.91m x 2.54m)
 En Suite
 Sitting Room: 23'0 x 10'8 (7.02m x 3.25m)
 Cloakroom

FIRST FLOOR

Landing
 Bedroom 1: 18'10 x 14'1 (5.74m x 4.30m)
 En Suite
 Bedroom 2: 10'4 x 9'10 (3.15m x 3.00m)
 Bedroom 3: 9'10 x 8'9 (3.00m x 2.67m)
 Bathroom

OUTSIDE

Front Garden
 Driveway
 Carport
 Rear Garden



Main features

- Four bedroom detached house offering flexible living space
- Spacious self contained one bedroom annex
- Four bathroom/shower rooms
- Ample off road parking and car port
- Plenty of countryside walks on the door step
- Situated in a popular road within walking distance to shop, primary school and village pub



Nearest Schools

Primary Schools: Ewhurst CofE 0.4 mi, Park Mead 2.1 mi, St Cuthbert Mayne 2.4 mi, Cranleigh C of E 2.8 mi

Secondary Schools: Glebelands 2.8 mi, Cranleigh (private) 3.6 mi.



Transport Information

Train Stations: Ockley 6.2 miles, Chilworth 8.2 miles, Warnham 9.3 miles, Horsham 10.2 miles



Address

Mapledrakes Road, Ewhurst, Cranleigh, Surrey, GU6



Directions

For directions to this property please contact us.



cubitt&west
Helping you move forwards

Call Cranleigh Branch 01483 271567 ■ cubittandwest.co.uk



- Legal advice should be taken to verify fixtures/fittings, planning, alterations and/or lease details
- Appliances & services are untested, dimensions are approximate and floor plans are not to scale
- Through a Homewise Home For Life Plan people aged 60+ can secure this property for up to 59% less, by purchasing a Lifetime Lease.



20306720/20240608/CH/KAB