



Price
£450,000

Freehold

3x  1x  1x 

**Jubilee Cottages,
Horsham Road,
Cranleigh, Surrey, GU6**

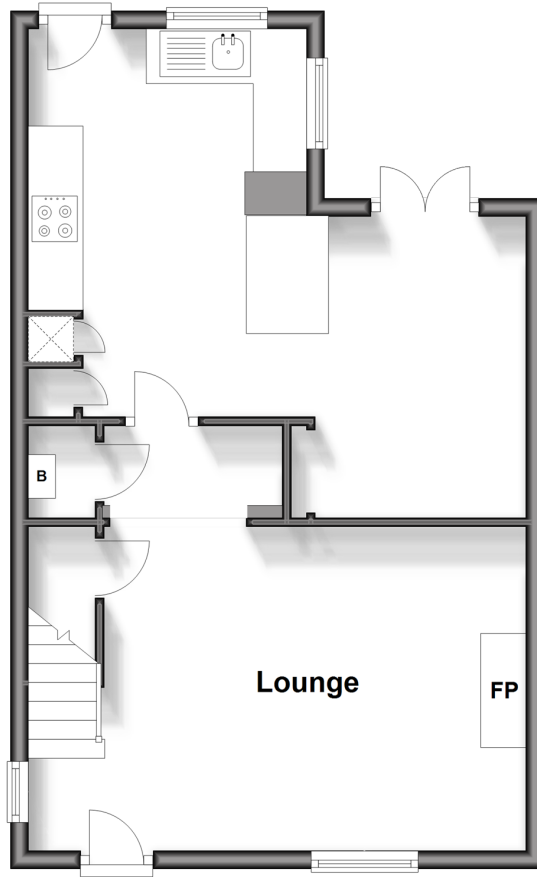
OVER 60?

Secure this property
for up to **59% less!**

cubitt & west
Helping you move forwards

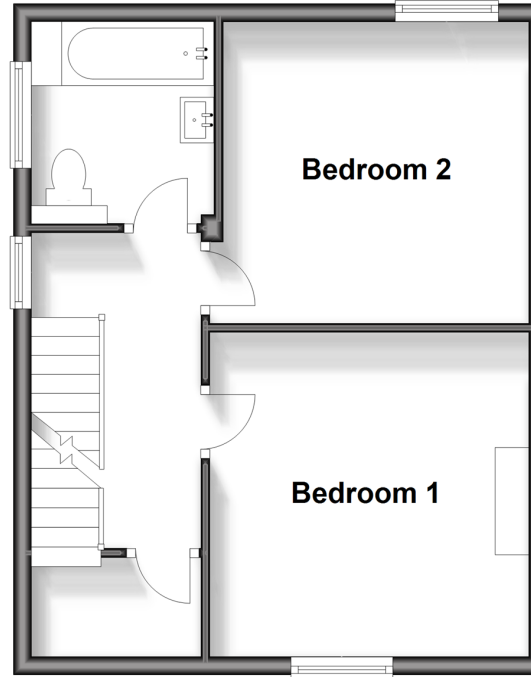
Ground Floor

Approx. 44.6 sq. metres (480.4 sq. feet)



First Floor

Approx. 38.3 sq. metres (412.3 sq. feet)



Second Floor

Approx. 16.8 sq. metres (180.7 sq. feet)



Accommodation

GROUND FLOOR

Lounge: 18'10 x 12'6 (5.74m x 3.81m)

Kitchen: 14'1 x 8'1 (4.30m x 2.47m)

Dining Room: 10'1 x 8'1 (3.08m x 2.47m)

FIRST FLOOR

Landing

Bedroom 1: 12'1 x 11'7 (3.69m x 3.53m)

Bedroom 2: 10'10 x 10'10 (3.30m x 3.30m)

Bathroom

SECOND FLOOR

Bedroom 3: 16'8 x 10'6 (5.08m x 3.20m)

OUTSIDE

Off Road Parking

Courtyard Garden



Main features

- Stunning three double bedroom cottage
- Spacious kitchen/breakfast room
- Low maintenance courtyard garden
- Off road parking
- Short walk from local schools, village centre, restaurants and pubs.



Nearest Schools

Primary Schools: St Cuthbert Mayne Catholic Primary 0.2 miles, Cranleigh C of E Primary 0.6 miles, Park Mead Primary 0.8 miles

Secondary Schools: Glebelands School 0.6 miles,



Transport Information

Train Stations: Shalford 7.2 miles, Chilworth 7.6 miles, Gomshall 7.7 miles, Ockley 8.3 miles, Guildford 9.2 miles



Address

Jubilee Cottages, Horsham Road, Cranleigh, Surrey, GU6



Directions

For directions to this property please contact us.



cubitt&west
Helping you move forwards

Call Cranleigh Branch 01483 271567 ■ [cubittandwest.co.uk](https://www.cubittandwest.co.uk)



- Legal advice should be taken to verify fixtures/fittings, planning, alterations and/or lease details
- Appliances & services are untested, dimensions are approximate and floor plans are not to scale
- Through a Homewise Home For Life Plan people aged 60+ can secure this property for up to 59% less, by purchasing a Lifetime Lease.

EPC RATING

CURRENT:	POTENTIAL:
D(59)	B(33)

20300493/20240502/RD/KAB