



Price

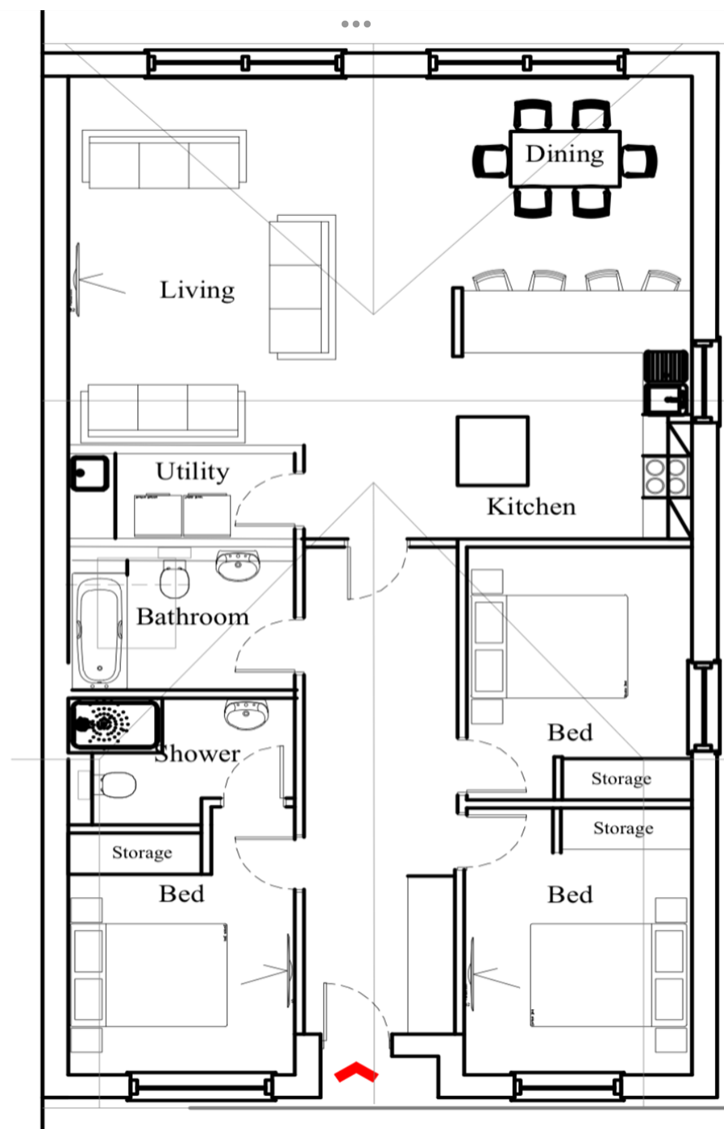
£525,000

Freehold

3x  2x  1x 

**Cypress Grove, Alfold,
Cranleigh, Surrey, GU6**

cubitt&west
Helping you move forwards



Accommodation

GROUND FLOOR

Entrance Hallway

Bedroom 1: 11'5 x 9'4 (3.48m x 2.85m)

En Suite Shower

Bedroom 2: 12'7 x 9'4 (3.84m x 2.85m)

Bedroom 3: 12'1 x 9'4 (3.69m x 2.85m)

Bathroom: 9'5 x 6'10 (2.87m x 2.08m)

Kitchen / Living Area: 25'11 x 21'10 (7.90m x 6.66m)

Utility Room: 9'5 x 4'0 (2.87m x 1.22m)

OUTSIDE

Allocated Parking

Rear Garden



Main features

- Stunning new bungalow built to a high spec
- Open plan living with fitted kitchen and utility room
- Three good sized bedrooms with master bedroom having an ensuite
- Benefits from gas underfloor heating, electric EV charger and allocated parking
- *Photos are of the show home for illustrative purposes only. Finishes and layouts may vary*



Nearest Schools

Primary Schools: Rudgwick Primary 1.3 miles, Loxwood Primary 1.8 miles, Cranleigh Primary Schools 5.4 miles

Secondary Schools: Penthorpe School (private) 1.1 miles, Glebelands School and Cranleigh School (private) 5.4



Transport Information

Train Stations: Chilworth 5.4 miles, Gomshall 5.8 miles, Shalford 5.8 miles



Address

Cypress Grove, Alfold, Cranleigh, Surrey, GU6



Directions

For directions to this property please contact us.



cubitt&west
Helping you move forwards

Call Cranleigh Branch 01483 271567 ■ cubittandwest.co.uk



- If buying to let, the energy rating will need to be improved to at least 'E' rating before you can let the property
- Appliances & services are untested, dimensions are approximate and floor plans are not to scale

- Legal advice should be taken to verify fixtures/fittings, planning, alterations and/or lease details

20306627/20241126/CH/KAB