



**Price**

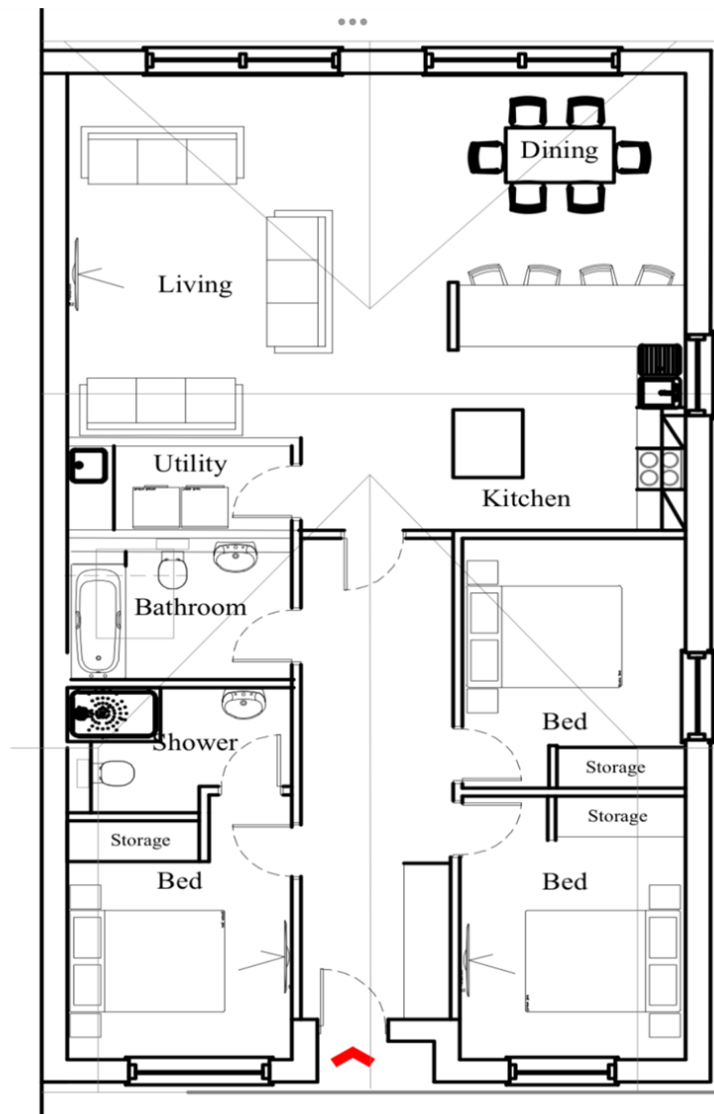
**£510,000**

**Freehold**

3x  2x  1x 

**Cypress Grove, Alfold,  
Cranleigh, Surrey, GU6**

**cubitt&west**  
Helping you move forwards



## Accommodation

### GROUND FLOOR

Entrance Hallway

Bedroom 1: 11'9 x 10'0 (3.58m x 3.05m)

En Suite

Bedroom 2: 12'9 x 9'9 (3.89m x 2.97m)

Bedroom 3: 12'9 x 9'9 (3.89m x 2.97m)

Bathroom

Kitchen / Living Area: 26'9 x 22'6 (8.16m x 6.86m)

Utility Room

### OUTSIDE

Allocated Parking

Rear Garden





## Main features

- Stunning new bungalow built to a high specification
- Open plan living with floor to ceiling windows
- High end kitchen and handy utility room
- Spacious main bedroom with en suite shower room
- Economical underfloor heating
- Allocated parking with EV charging point



### Nearest Schools

Primary Schools: Rudgwick Primary 1.3 miles, Loxwood Primary 1.8 miles, Cranleigh Primary Schools 5.4 miles

Secondary Schools: Penthorpe School (private) 1.1 miles, Glebelands School and Cranleigh School (private) 5.4



### Transport Information

Train Stations: Chilworth 5.4 miles, Gomshall 5.8 miles, Shalford 5.8 miles



### Address

Cypress Grove, Alfold, Cranleigh, Surrey, GU6



### Directions

For directions to this property please contact us.

