



Price

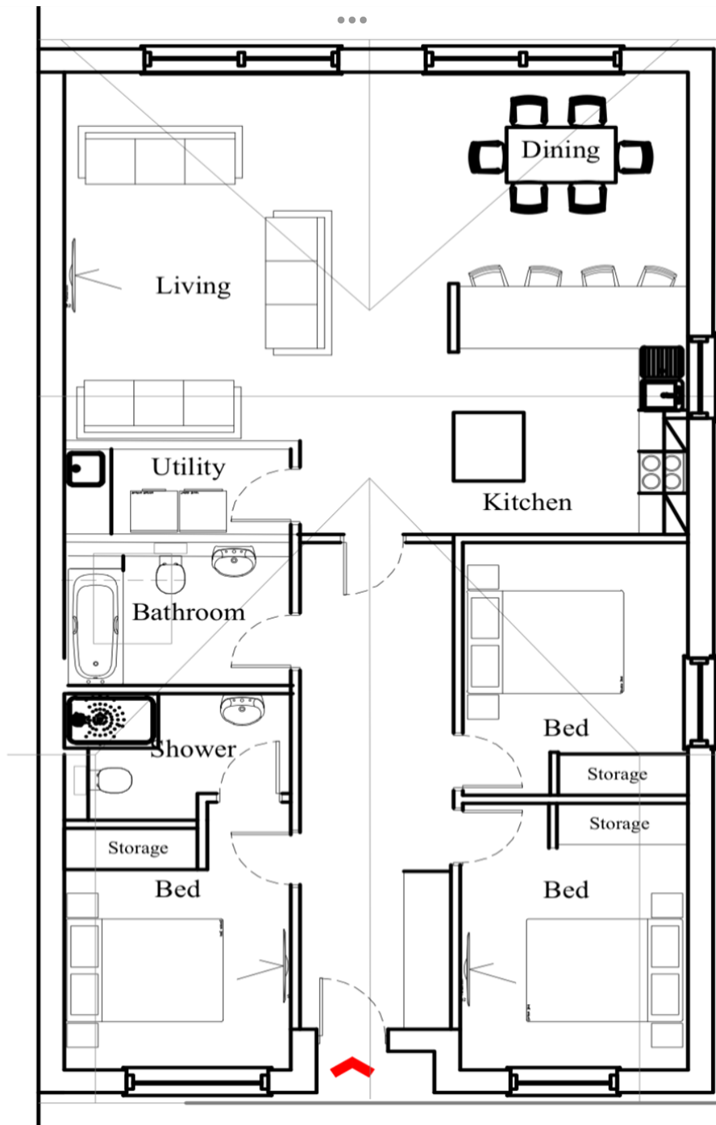
£525,000

Freehold

3x  1x  1x 

**Cypress Grove, Alfold,
Cranleigh, Surrey, GU6**

cubitt & west
Helping you move forwards



Accommodation

GROUND FLOOR

Entrance Hallway

Bedroom 1: 11'9 x 10'0 (3.58m x 3.05m)

En Suite

Bedroom 2: 12'9 x 9'9 (3.89m x 2.97m)

Bedroom 3: 12'9 x 9'9 (3.89m x 2.97m)

Bathroom

Kitchen

Utility Room

Living Area

Dining Area

OUTSIDE

Allocated Parking

Rear Garden



Main features

- Stunning new build bungalow built to a high spec
- Three good sized bedrooms
- Useful utility room
- Close to local shops and lovely countryside walks
- Allocated parking
- *Photos are of the show home for illustrative purposes only. Finishes and layouts may vary*



Nearest Schools

Primary Schools: Rudgwick Primary 1.3 miles, Loxwood Primary 1.8 miles, Cranleigh Primary Schools 5.4 miles

Secondary Schools: Penthorpe School (private) 1.1 miles, Glebelands School and Cranleigh School (private) 5.4



Transport Information

Train Stations: Chilworth 5.4 miles, Gomshall 5.8 miles, Shalford 5.8 miles



Address

Cypress Grove, Alfold, Cranleigh, Surrey, GU6



Directions

For directions to this property please contact us.



cubitt&west
Helping you move forwards

Call Cranleigh Branch 01483 271567 ■ [cubittandwest.co.uk](https://www.cubittandwest.co.uk)



- If buying to let, the energy rating will need to be improved to at least 'E' rating before you can let the property
- Appliances & services are untested, dimensions are approximate and floor plans are not to scale

- Legal advice should be taken to verify fixtures/fittings, planning, alterations and/or lease details