



Price
£450,000

Freehold

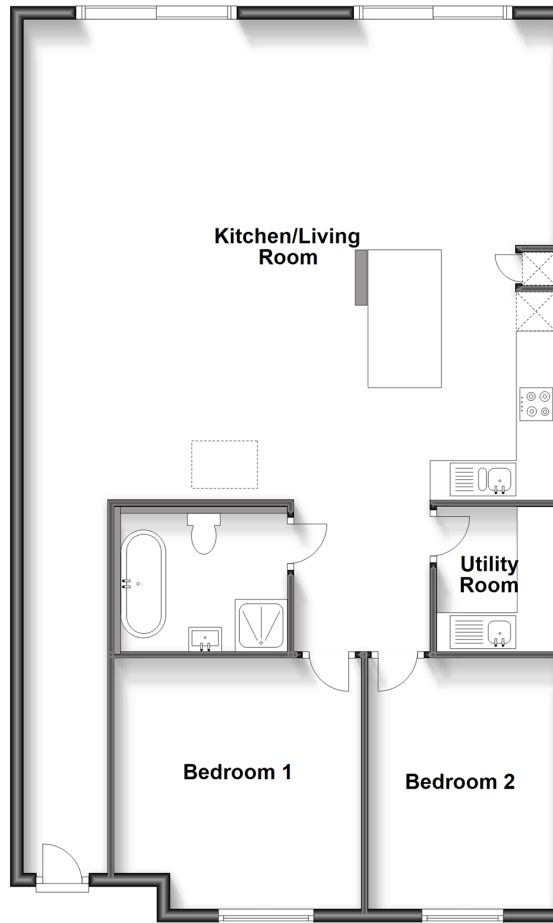
2x  1x  1x 

**Cypress Grove, Alfold,
Surrey, GU6**

cubitt & west
Helping you move forwards

Ground Floor

Approx. 108.2 sq. metres (1164.5 sq. feet)



Accommodation

GROUND FLOOR

Entrance Hallway

Kitchen/Living Room: 26'8 x 24'1 (8.13m x 7.35m)

Bedroom 1: 12'6 x 12'0 (3.81m x 3.66m)

Bedroom 2: 12'6 x 9'8 (3.81m x 2.95m)

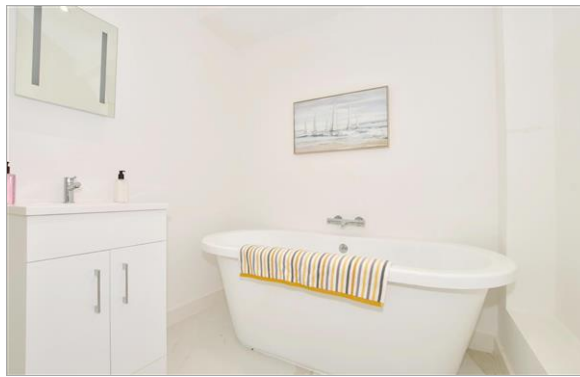
Utility Room

Bathroom

OUTSIDE

Allocated Parking

Rear Garden



Main features

- Stunning new build flooded with natural light
- Open living space
- Useful utility room
- Close to local shops and countryside walks
- Allocated parking
- Photos are of the show home for illustrative purposes only. Finishes and layouts may vary

Nearest Schools

Primary Schools: Rudgwick Primary 1.3 miles, Loxwood Primary 1.8 miles, Cranleigh Primary Schools 5.4 miles

Secondary Schools: Penthorpe (private) 1.1 miles, Glebelands School 5.4 miles, Cranleigh School (private)

Transport Information

Train Stations: Chilworth 5.4 miles, Gomshall 5.8 miles, Shalford 5.8 miles

Address

Cypress Grove, Alfold, Surrey, GU6

Directions

For directions to this property please contact us.



cubitt&west
Helping you move forwards

Call Cranleigh Branch 01483 271567 ■ [cubittandwest.co.uk](https://www.cubittandwest.co.uk)



■ Legal advice should be taken to verify fixtures/fittings, planning, alterations and/or lease details ■ Appliances & services are untested, dimensions are approximate and floor plans are not to scale

20306540/20240316/CH/KAB