



Price
£340,000

Freehold

2x  1x  1x 

**Redmans Cottages,
Lavant, Chichester,
West Sussex, PO18**

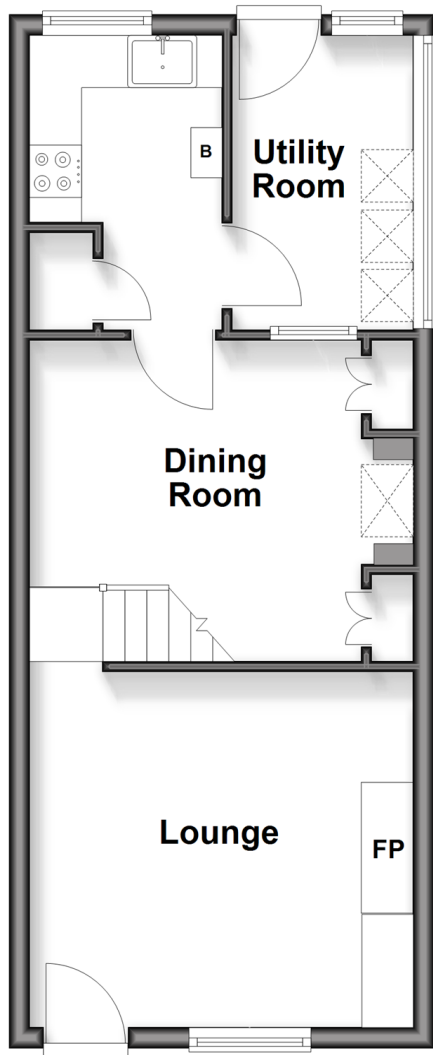
OVER 60?

Secure this property
for up to **59% less!**

cubitt & west
Helping you move forwards

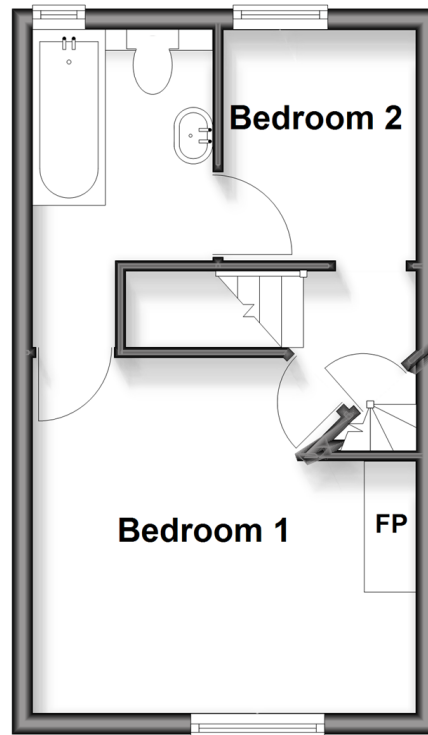
Ground Floor

Approx. 35.0 sq. metres (376.2 sq. feet)



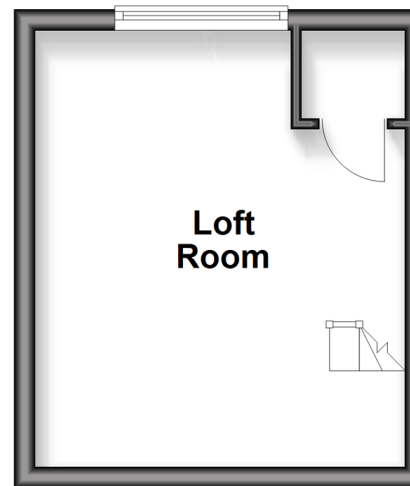
First Floor

Approx. 24.1 sq. metres (259.4 sq. feet)



Second Floor

Approx. 14.9 sq. metres (160.0 sq. feet)



Accommodation

GROUND FLOOR

Lounge: 12'1 x 11'2 (3.69m x 3.41m)

Dining Room: 13'1 x 9'9 (3.99m x 2.97m)

Kitchen: 9'3 x 6'0 (2.82m x 1.83m)

Utility Room

FIRST FLOOR

Bedroom 1: 12'10 x 11'3 (3.91m x 3.43m)

Bedroom 2: 7'4 x 6'2 (2.24m x 1.88m)

Bathroom

SECOND FLOOR

Loft Room: 13'10 x 11'6 (4.22m x 3.51m)

OUTSIDE

Garden



Main features

- Grade II listed cottage bursting with character
- Tastefully decorated throughout
- Kitchen with separate dining room and utility room
- Stunning countryside views within a beautiful village
- Residential parking permit



Nearest Schools

Primary Schools: Lavant CofE Primary 0.1 miles; Jessie Youngusband Primary 1.6 miles; Parklands Community Primary 2.0 miles

Secondary Schools: Lavant House 0.3 miles; Fordwater



Transport Information

Train Stations: Fishbourne 2.5 miles, Chichester 2.6 miles, Bosham 3.4 miles



Address

Redmans Cottages, Lavant, Chichester, West Sussex, PO18



Directions

For directions to this property please contact us.



cubitt&west
Helping you move forwards

Call Chichester Branch 01243 786581 ■ cubittandwest.co.uk



■ Legal advice should be taken to verify fixtures/fittings, planning, alterations and/or lease details ■ Appliances & services are untested, dimensions are approximate and floor plans are not to scale
■ Through a Homewise Home For Life Plan people aged 60+ can secure this property for up to 50% less, by purchasing a Lifetime Lease.



40415551/20250911/TJ/CNW