



Price
£300,000

Freehold

3x  1x  1x 

**Middleton Gardens,
Tangmere, Chichester,
West Sussex, PO20**

cubitt&west
Helping you move forwards



Main features

- 3 bedroom semi-detached house
- Modernised property
- Lovely, low maintenance garden with patio area
- Sought after village location yet just over 4 miles from Chichester' city centre
- Ideal purchase for a first time buyer or rental investor

Accommodation

GROUND FLOOR

Entrance Hall

Lounge: 14'6 x 11'11 (4.42m x 3.63m)

Kitchen/Diner: 15'0 x 9'5 (4.58m x 2.87m)

FIRST FLOOR

Landing

Bedroom 1: 11'5 x 8'3 (3.48m x 2.52m)

Bedroom 2: 7'1 x 6'6 (2.16m x 1.98m)

Bedroom 3: 8'4 x 8'1 (2.54m x 2.47m)

Bathroom: 6'7 x 5'7 (2.01m x 1.70m)

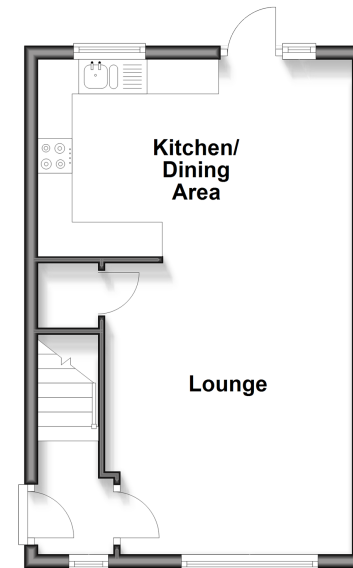
OUTSIDE

Front Garden

Rear Garden

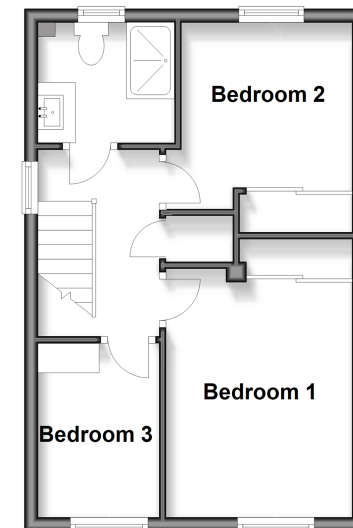
Ground Floor

Approx. 33.0 sq. metres (355.5 sq. feet)



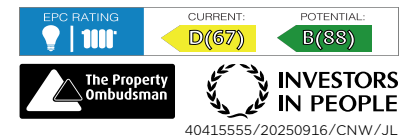
First Floor

Approx. 33.0 sq. metres (355.5 sq. feet)



Call Chichester - 01243 786581 ■ cubittandwest.co.uk

- Legal advice should be taken to verify fixtures/fittings, planning, alterations and/or lease details
- Appliances & services are untested, dimensions are approximate and floor plans are not to scale



40415555/20250916/CNW/JL