



Price

£259,000

Leasehold

2x  2x  1x 

**Graylingwell Drive,
Chichester, West
Sussex, PO19**

cubitt&west
Helping you move forwards



Main features

- Well presented first floor duplex apartment with street level access
- Open plan living accommodation
- Two bathrooms and separate toilet
- Allocated parking space
- Offered with no forward chain

Accommodation

FIRST FLOOR

Entrance

Lounge/Diner: 16'11 x 14'10 (5.16m x 4.52m)

Cloakroom

Kitchen: 11'0 x 7'10 (3.36m x 2.39m)

SECOND FLOOR

Landing

Bedroom 1: 13'10 x 11'10 (4.22m x 3.61m)

En-Suite Shower Room

Bathroom

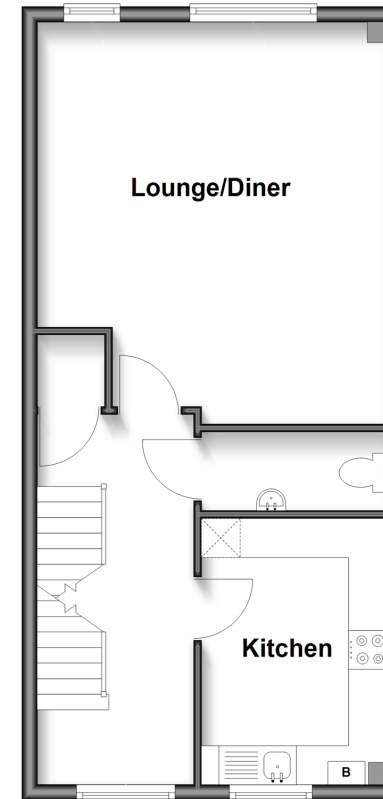
Bedroom 2: 11'6 x 9'6 (3.51m x 2.90m)

OUTSIDE

Allocated Parking Space

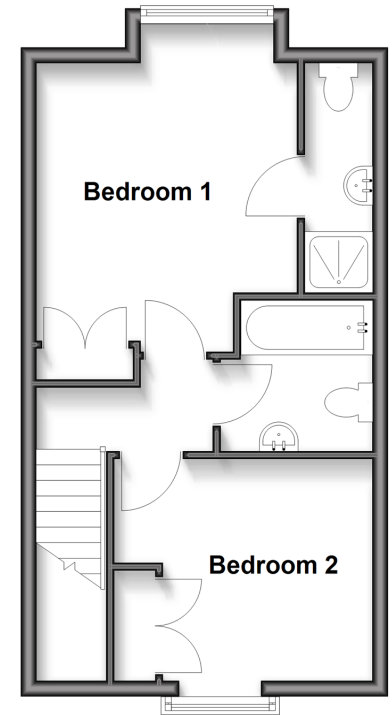
First Floor

Approx. 44.3 sq. metres (476.5 sq. feet)



Second Floor

Approx. 35.5 sq. metres (381.8 sq. feet)



Call Chichester - 01243 786581 ■ cubittandwest.co.uk

- Legal advice should be taken to verify fixtures/fittings, planning, alterations and/or lease details
- Appliances & services are untested, dimensions are approximate and floor plans are not to scale



40415423/20250707/CNW/MH