



**Price**

**£310,000**

**Freehold**

2x  1x  1x 

**Chayle Gardens, Selsey,  
Chichester, West  
Sussex, PO20**

**cubitt&west**  
Helping you move forwards





## Main features

- Large, detached bungalow in quiet cul-de-sac location
- Off road parking for several cars
- Close to the local shops and schools
- Large lounge and conservatory overlooking sunny rear garden
- Just a short walk to the seafront
- Scope to develop and extend (subject to consents)

## Accommodation

### GROUND FLOOR

Hallway

Kitchen: 11'0 x 8'10 (3.36m x 2.69m)

Conservatory: 9'5 x 7'9 (2.87m x 2.36m)

Lounge: 16'1 x 11'2 (4.91m x 3.41m)

Bedroom 1: 11'5 into bay x 11'1 (3.48m x 3.38m)

Bedroom 2: 9'1 into bay x 8'0 (2.77m x 2.44m)

Bathroom: 6'1 x 5'10 (1.86m x 1.78m)

### OUTSIDE

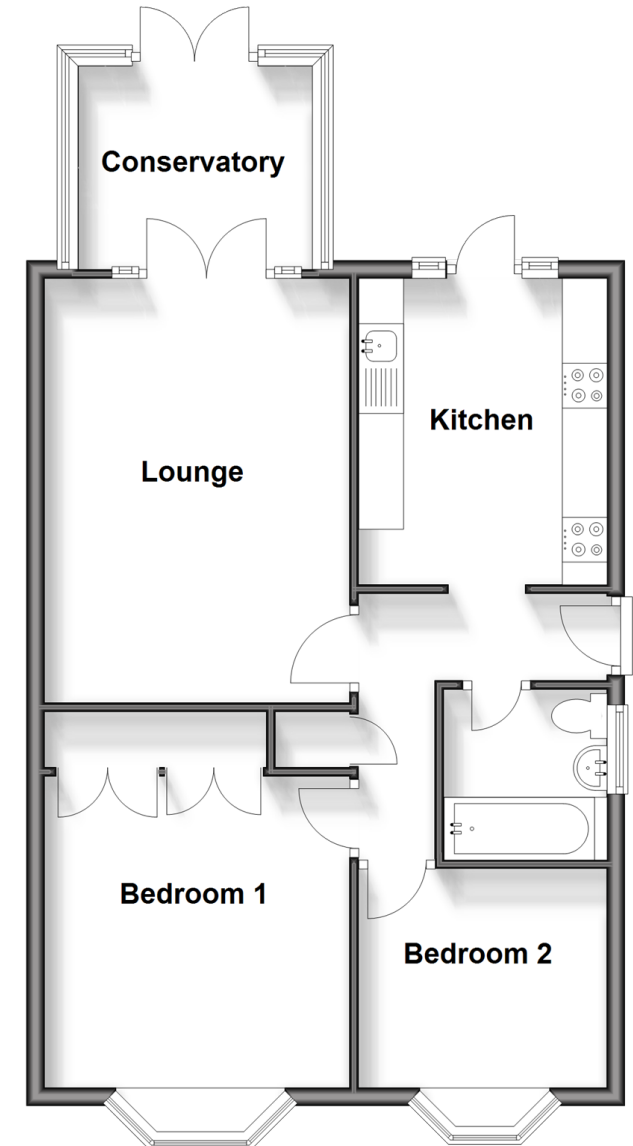
Garage En Bloc

Off Road Parking

Front & Rear Gardens

## Ground Floor

Approx. 63.4 sq. metres (682.1 sq. feet)



**Call Chichester - 01243 786581 ■ [cubittandwest.co.uk](http://cubittandwest.co.uk)**

- Legal advice should be taken to verify fixtures/fittings, planning, alterations and/or lease details
- Appliances & services are untested, dimensions are approximate and floor plans are not to scale



40415381/20250508/HS/HS