



OVER 60?

Secure this property
for up to **59% less!**

Price

£450,000

Freehold

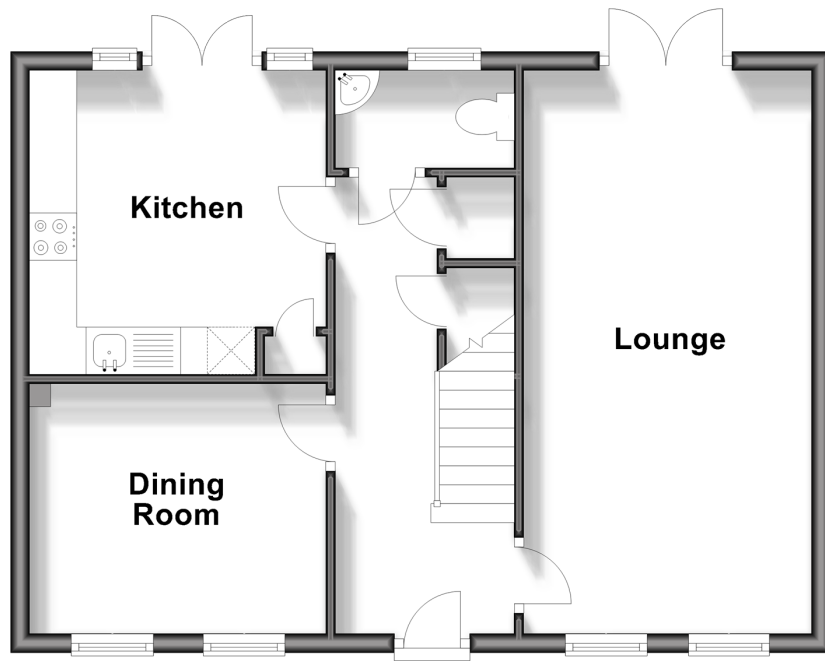
3x  2x  2x 

**Jodrell Place, Selsey,
Chichester, West
Sussex, PO20**

cubitt&west
Helping you move forwards

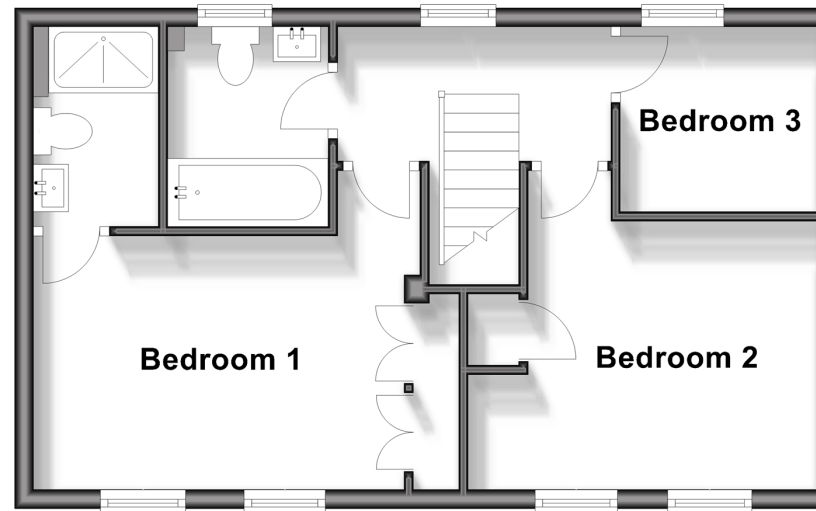
Ground Floor

Approx. 49.2 sq. metres (529.9 sq. feet)



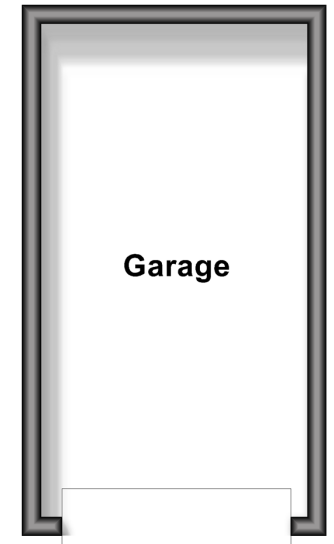
First Floor

Approx. 40.4 sq. metres (434.9 sq. feet)



Outbuilding

Approx. 14.6 sq. metres (157.6 sq. feet)



Accommodation

GROUND FLOOR

Hallway

Dining Room: 10'2 x 8'2 (3.10m x 2.49m)

Kitchen: 10'2 x 10'1 (3.10m x 3.08m)

Cloakroom

Lounge: 15'7 x 9'8 (4.75m x 2.95m)

FIRST FLOOR

Landing

Bedroom 1: 13'7 x 9'1 (4.14m x 2.77m)

En-Suite Shower Room

Bedroom 2: 9'8 x 9'5 (2.95m x 2.87m)

Bedroom 3: 6'5 x 6'4 (1.96m x 1.93m)

Bathroom

OUTBUILDING

Garage

OUTSIDE

Off Road Parking

Front & Rear Gardens



Main features

- Stunning modern detached house with garage and off road parking
- 11 solar panels producing electricity and potential income
- Large rear garden featuring lawned area and terrace
- High specification kitchen
- Close to local shops and schools



Nearest Schools

Medmerry Primary 0.7 miles, Seal Primary, Selsey 0.7 miles, Sidlesham Primary 2.6 miles, Manhood Community College 0.7 miles, The Regis 5.2 miles, Chichester High School for Girls 6.2 miles, Chichester High School for Boys 6.3 miles



Transport Information

Train Stations: Bognor Regis 5.4 miles, Chichester 6.4 miles, Fishbourne 7.1 miles



Address

Jodrell Place, Selsey, Chichester, West Sussex, PO20



Directions

For directions to this property please contact us.



cubitt&west
Helping you move forwards

Call Chichester Branch 01243 786581 ■ [cubittandwest.co.uk](https://www.cubittandwest.co.uk)



■ Legal advice should be taken to verify fixtures/fittings, planning, alterations and/or lease details ■ Appliances & services are untested, dimensions are approximate and floor plans are not to scale
■ Through a Homewise Home For Life Plan people aged 60+ can secure this property for up to 59% less, by purchasing a Lifetime Lease.



40415243/20241126/KF/KH