



**Price**  
**£875,000**

**Freehold**

4x  1x  3x 

**Stanton Drive,  
Chichester, West  
Sussex, PO19**

**OVER 60?**

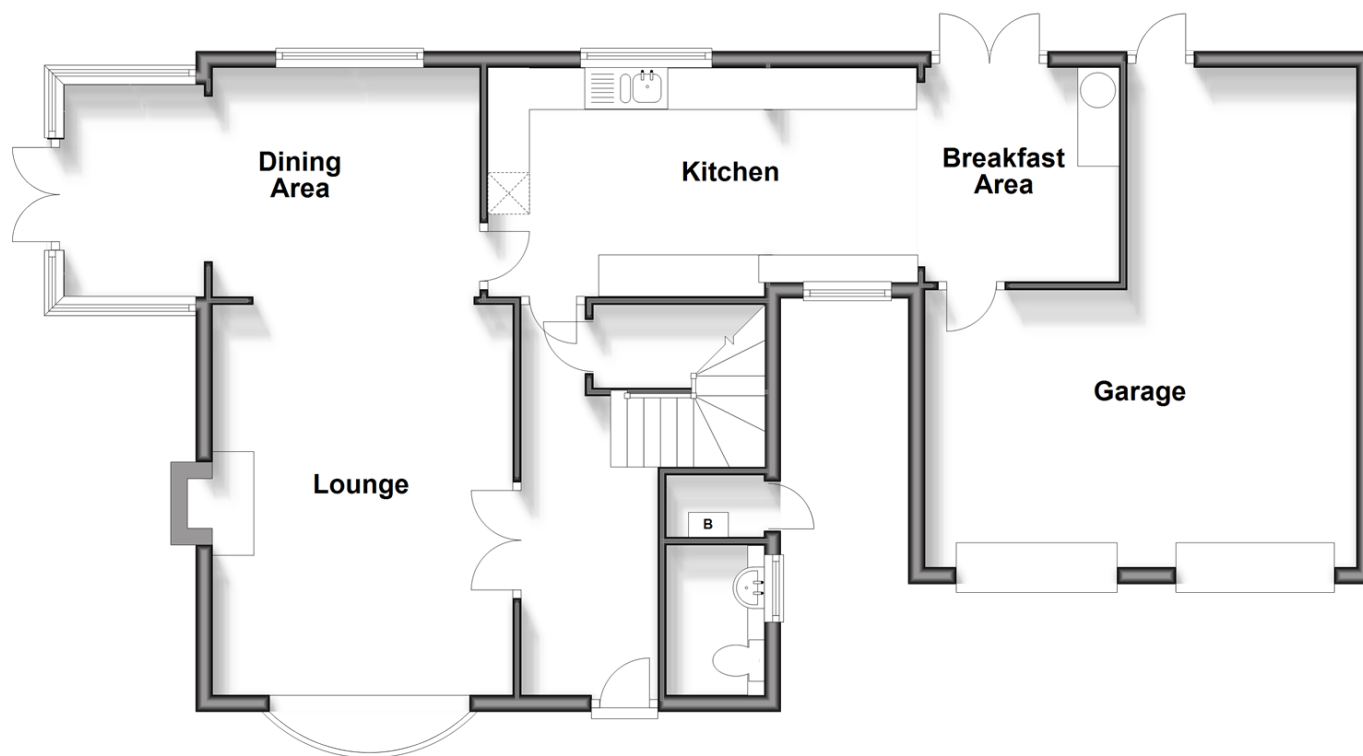
Secure this property  
for up to **59% less!**

**cubitt&west**  
Helping you move forwards



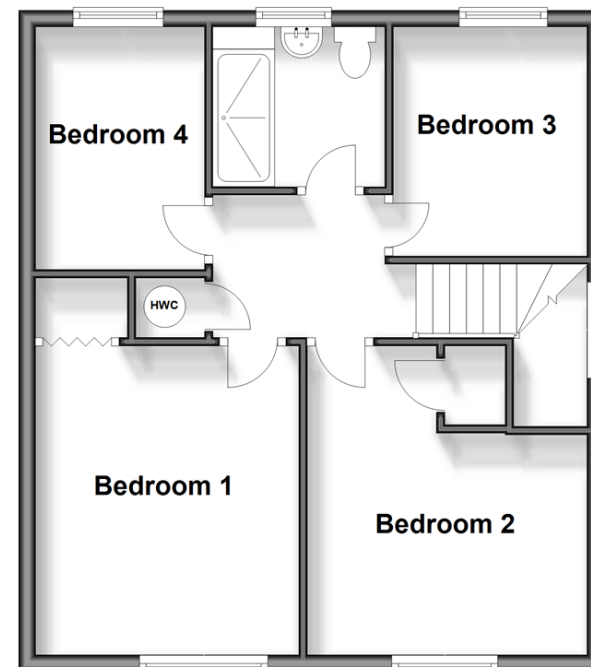
## Ground Floor

Approx. 91.7 sq. metres (987.0 sq. feet)



## First Floor

Approx. 50.4 sq. metres (542.0 sq. feet)



## Accommodation

### GROUND FLOOR

Hallway  
Cloakroom  
Lounge: 15'5 x 11'10 (4.70m x 3.61m)  
Dining Area: 10'6 x 8'10 (3.20m x 2.69m)  
Sun Room: 9'6 x 7'5 (2.90m x 2.26m)  
Kitchen: 17'5 x 9'0 (5.31m x 2.75m)  
Breakfast Area: 9'0 x 7'9 (2.75m x 2.36m)

### FIRST FLOOR

Landing  
Bedroom 1: 12'1 x 10'6 (3.69m x 3.20m)  
Bedroom 2: (L-shaped) 11'2 x 8'10 (3.41m x 2.69m) plus 5'2 x 3'10 into fitted cupboard (1.58m x 1.17m)  
Bedroom 3: 8'11 x 7'8 (2.72m x 2.34m)  
Bedroom 4: 9'7 x 6'9 (2.92m x 2.06m)  
Bathroom

### OUTSIDE

Double Garage  
Off Road Parking  
Front & Rear Gardens



## Main features

- Spacious detached house with double garage & ample off road parking
- Located in the desirable Summersdale area
- Situated close to The Goodwood Estate & Chichester's city centre
- Private, rear garden
- Light & airy accommodation throughout
- Ideal family home



### Nearest Schools

Jessie Younghusband Primary 0.8 miles, Lavant CofE Primary 0.9 miles, Central CofE Junior School 1.2 miles, Fordwater School, Chichester 0.4 miles, St Anthony's School 0.8 miles, Bishop Luffa C of E School, Chichester 1.5 miles, Chichester College 1.5 miles



### Transport Information

Train Stations: Chichester 1.7 miles, Fishbourne 2.0 miles, Bosham 3.1 miles



### Address

Stanton Drive, Chichester, West Sussex, PO19



### Directions

For directions to this property please contact us.





**cubitt&west**  
Helping you move forwards

Call Chichester Branch 01243 786581 ■ [cubittandwest.co.uk](https://cubittandwest.co.uk)



■ Legal advice should be taken to verify fixtures/fittings, planning, alterations and/or lease details ■ Appliances & services are untested, dimensions are approximate and floor plans are not to scale  
■ Through a Homewise Home For Life Plan people aged 60+ can secure this property for up to 59% less, by purchasing a Lifetime Lease.



40415222/20241114/KF/KH