



Price
£785,000

Freehold

3x  1x  2x 

**Compton, Chichester,
West Sussex, PO18**

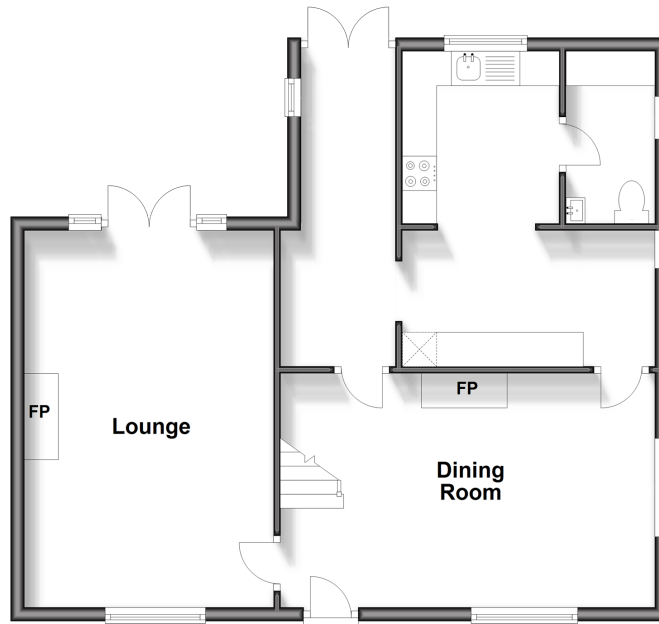
OVER 60?

Secure this property
for up to **59% less!**

cubitt&west
Helping you move forwards

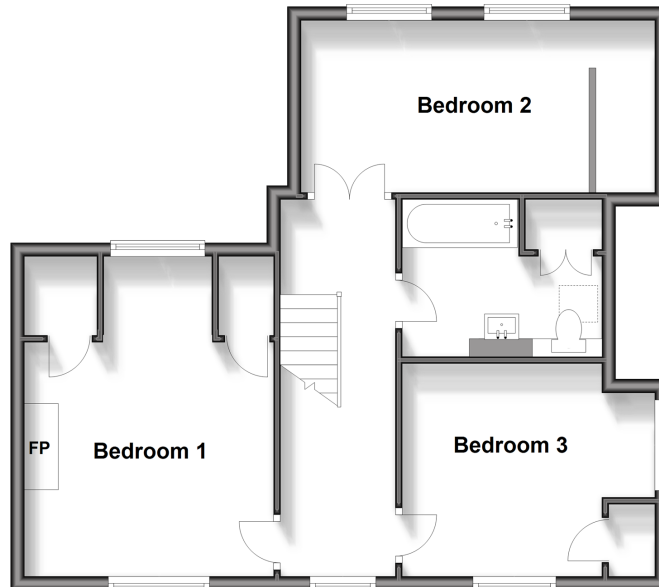
Ground Floor

Approx. 63.9 sq. metres (687.5 sq. feet)



First Floor

Approx. 58.5 sq. metres (629.9 sq. feet)



Accommodation

GROUND FLOOR

Dining Room: 17'11 x 11'1 (5.46m x 3.38m)

Lounge: 17'8 x 11'10 (5.39m x 3.61m)

Rear Hallway: 15'5 (4.70m) x 5'4 (1.63m)
narrowing to 4'7 (1.40m)

Kitchen: 12'1 x 7'3 (3.69m x 2.21m) plus 8'1
x 7'6 (2.47m x 2.29m)

Cloakroom: 8'1 x 4'2 (2.47m x 1.27m)

FIRST FLOOR

Landing

Bedroom 1: 16'3 into bay (4.96m) x 11'10
(3.61m) narrowing to 10'9 (3.28m)

Bedroom 2: 11'11 into bay x 10'3 (3.63m x
3.13m)

Bedroom 3: 13'10 x 8'1 (4.22m x 2.47m)

Bathroom: 9'2 x 4'2 (2.80m x 1.27m)

OUTSIDE

Garage & Off Road Parking

Front & Rear Gardens

Outbuilding

Shed



Main features

- Grade II listed, semi-detached cottage in peaceful village
- Highly sought-after location
- Fantastic sized rear garden (0.6063 Acres) with fruit trees & beautiful rural views
- Benefits from an outbuilding with pitched & tiled roof
- Spacious accommodation throughout
- Ample off road parking including a garage



Nearest Schools

Compton and Up Marden CofE Primary 0.1 miles, Rowlands Castle St John's C of E Controlled Primary 4.3 miles, Staunton Community Sports College 4.7 miles, Glenwood School 5.6 miles, Havant College 6.2 miles



Transport Information

Train Stations: Rowlands Castle 4.5miles, Southbourne 5.5 miles, Emsworth 5.6 miles, Nutbourne 5.7 miles



Address

Compton, Chichester, West Sussex, PO18



Directions

For directions to this property please contact us.



cubitt&west
Helping you move forwards

Call Chichester Branch 01243 786581 ■ cubittandwest.co.uk



- Legal advice should be taken to verify fixtures/fittings, planning, alterations and/or lease details
- Appliances & services are untested, dimensions are approximate and floor plans are not to scale
- Through a Homewise Home For Life Plan people aged 60+ can secure this property for up to 59% less, by purchasing a Lifetime Lease.



40414995/20250408/CNW/VB