



**Modern
Auction**

**£320,000
Freehold**

3x  1x  2x 

**Peter Weston Place,
Chichester, West
Sussex, PO19**

OVER 60?

Secure this property
for up to **59% less!**

cubitt&west
Helping you move forwards



Main features

- End of terrace house in convenient, central location
- Excellent public transport links including a mainline train station
- Good-sized, private rear garden
- Benefits from 2 allocated parking spaces
- Light & airy living space with ample storage
- Close to the local shops
- For sale by Modern Auction - T&Cs apply
- Subject to an undisclosed Reserve Price
- Buyer's fees apply

Accommodation

GROUND FLOOR

Hallway

Cloakroom: 6'8 x 2'11 (2.03m x 0.89m)

Lounge: 18'0 x 12'6 into alcove (5.49m x 3.81m)

Dining Area: 9'1 x 6'2 (2.77m x 1.88m)

Kitchen: 11'4 x 9'0 (3.46m x 2.75m)

FIRST FLOOR

Landing

Bedroom 1: 14'1 x 9'0 (4.30m x 2.75m)

Bedroom 2: 11'4 x 9'0 (3.46m x 2.75m)

Bedroom 3: 12'9 x 9'6 maximum (3.89m x 2.90m)

Bathroom: 8'9 x 6'8 (2.67m x 2.03m)

OUTSIDE

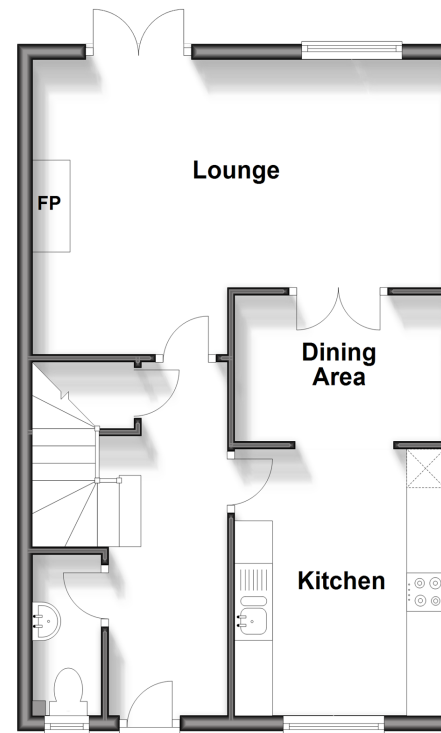
Allocated Parking

Front & Rear Gardens

Communal Gardens

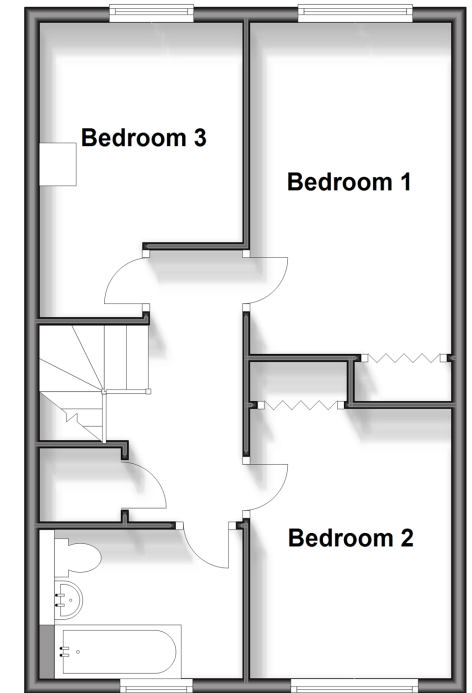
Ground Floor

Approx. 46.6 sq. metres (501.4 sq. feet)



First Floor

Approx. 46.6 sq. metres (501.4 sq. feet)



Call Chichester - 01243 786581 ■ cubittandwest.co.uk

- Legal advice should be taken to verify fixtures/fittings, planning, alterations and/or lease details
- Through a Homewise Home For Life Plan people aged 60+ can secure this property for up to 59% less, by purchasing a Lifetime Lease.

- Appliances & services are untested, dimensions are approximate and floor plans are not to scale



40415107/20250210/HS/VB