



Price

£300,000

Leasehold

2x  1x  1x 

**Royal Sussex House,
Donegall Avenue,
Chichester, West
Sussex, PO19**

cubitt & west
Helping you move forwards



Main features

- Spacious second floor apartment in sought-after Roussillon Park development
- Option to purchase 30% share of the property (£90,000) or up to 100% (£300,000)
- Benefits from a large balcony with beautiful views over the communal green
- Close to children's play park
- Ample storage throughout
- Only a short walk from Chichester's city centre
- Excellent public transport links including a mainline train station

Accommodation

SECOND FLOOR

Hallway

Lounge/Diner: (L-shaped) 16'6 x 9'1 (5.03m x 2.77m) plus 12'3 x 8'7 (3.74m x 2.62m)

Kitchen: 12'3 x 8'6 (3.74m x 2.59m)

Bedroom 1: 10'10 into alcove x 7'10 at widest point (3.30m x 2.39m) plus 13'5 x 7'6 (4.09m x 2.29m)

Bedroom 2: 12'10 x 11'3 (3.91m x 3.43m)

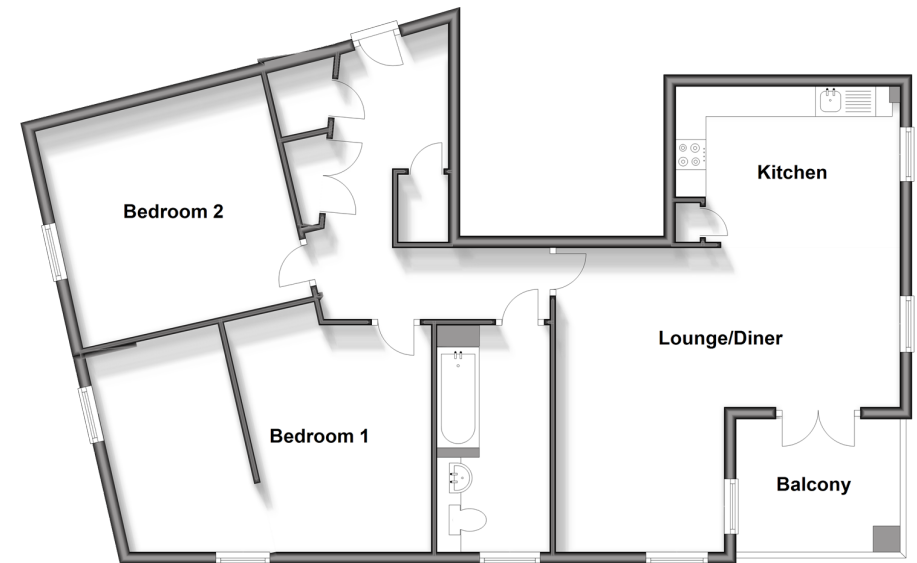
Bathroom: 12'2 x 6'1 (3.71m x 1.86m)

OUTSIDE

Balcony

Communal Gardens

Second Floor
Approx. 89.8 sq. metres (966.8 sq. feet)



Call Chichester - 01243 786581 ■ cubittandwest.co.uk

■ The seller is a person connected with Cubitt & West as defined in the Estate Agents Act 1979
 ■ Appliances & services are untested, dimensions are approximate and floor plans are not to scale

■ Legal advice should be taken to verify fixtures/fittings, planning, alterations and/or lease details



40415098/20240727/KF/VB