



Guide Price
£330,000

Freehold

3x  1x  2x 

**Mosse Gardens,
Fishbourne, Nr
Chichester, West
Sussex, PO19**

OVER 60?

Secure this property
for up to **59% less!**

cubitt & west
Helping you move forwards



Main features

- Spacious terraced house with 2 allocated parking spaces
- Beautiful, well-maintained, sunny rear garden
- Stunning conservatory extension with glazed lantern roof
- Excellent public transport links
- Sizeable lounge with cosy log-burner
- Close to local shops & schools

Accommodation

GROUND FLOOR

Porch

Lounge: 12'7" x 11'11" (3.84m x 3.63m)

Kitchen: 11'11" x 9'6" (3.63m x 2.90m)

Conservatory: 14'0" x 10'8" (4.27m x 3.25m)

FIRST FLOOR

Landing

Bedroom 1: 11'11" x 9'1" (3.63m x 2.77m)

Bedroom 2: 11'11" x 8'4" (3.63m x 2.54m)

Bedroom 3: 12'4" x 5'9" (3.76m x 1.75m)

Bathroom: 8'9" x 5'10" (2.67m x 1.78m)

OUTSIDE

Allocated Parking

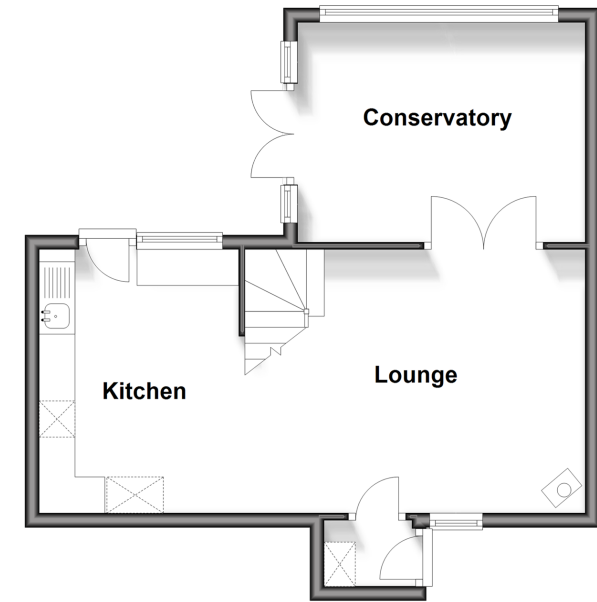
Communal Gardens

Rear Garden

Shed

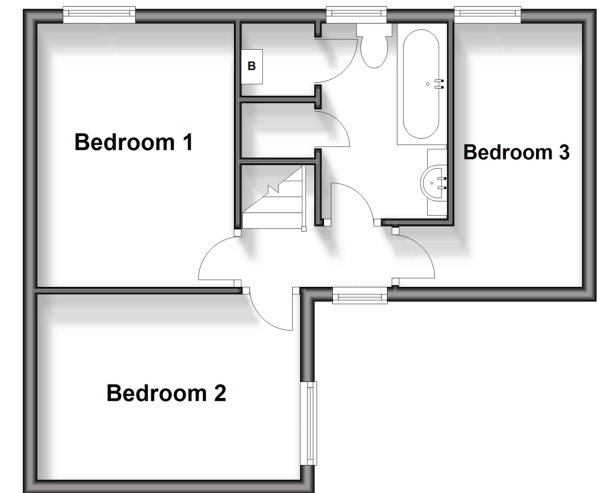
Ground Floor

Approx. 41.8 sq. metres (449.4 sq. feet)



First Floor

Approx. 37.7 sq. metres (405.9 sq. feet)



Call Chichester - 01243 786581 ■ cubittandwest.co.uk

- Legal advice should be taken to verify fixtures/fittings, planning, alterations and/or lease details
- Appliances & services are untested, dimensions are approximate and floor plans are not to scale
- Through a Homewise Home For Life Plan people aged 60+ can secure this property for up to 59% less, by purchasing a Lifetime Lease.



40415073/20240917/JF/VB