

OVER 60?

Secure this property
for up to **59% less!**



Price

£750,000

Freehold

4x  3x  2x 

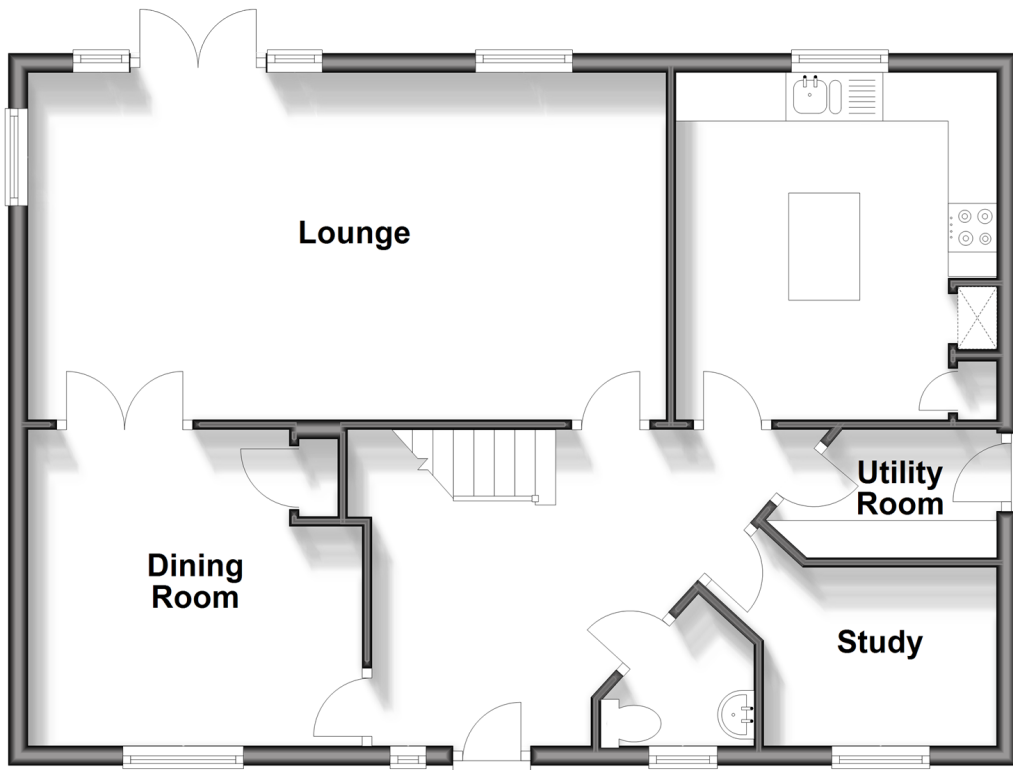
Mill Pond Crescent, Chichester, West

Sussex, PO19

cubitt & west
Helping you move forwards

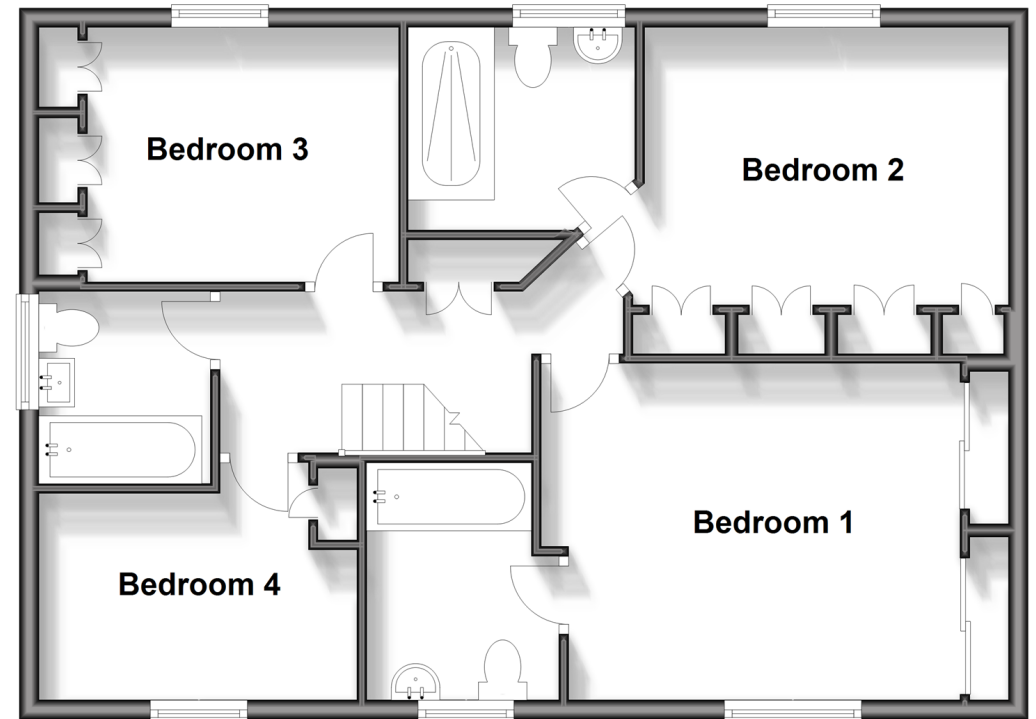
Ground Floor

Approx. 69.2 sq. metres (744.7 sq. feet)



First Floor

Approx. 69.2 sq. metres (744.7 sq. feet)



Accommodation

GROUND FLOOR

Entrance Hall

Cloakroom

Study: 8'5 x 5'11 (2.57m x 1.80m)

Utility: 8'0 x 4'11 (2.44m x 1.50m)

Kitchen: 11'8 x 10'9 (3.56m x 3.28m)

Lounge: 21'2 x 11'7 (6.46m x 3.53m)

Dining Room: 11'3 x 11'0 (3.43m x 3.36m)

FIRST FLOOR

Landing

Bedroom 1: 12'10 x 11'1 (3.91m x 3.38m)

En-Suite Bathroom

Bedroom 2: 11'2 x 10'1 (3.41m x 3.08m)

En-Suite Shower Room

Bedroom 3: 11'8 x 8'8 (3.56m x 2.64m)

Bedroom 4: 11'10 x 7'1 (3.61m x 2.16m)

Bathroom

OUTSIDE

Double Garage

Off Road Parking

Front & Rear Gardens



Main features

- Immaculately presented detached house in desirable location
- Former show home with numerous upgrades throughout
- Double garage and ample driveway space
- Private estate with large open meadows
- Quite cul-de-sac position
- Well-presented sunny rear garden
- No onward chain

Nearest Schools

Kingsham Primary 0.6 miles, St Richard's Catholic Primary 0.7 miles, Central CoFE Junior School 1.1 miles, Chichester High School for Girls 0.5 miles, Chichester High School for Boys 0.6 miles, Bishop Luffa C of E School, Chichester 1.2 miles, Chichester College 0.8 miles

Transport Information

Train Stations: Chichester 0.6 miles, Fishbourne 1.7 miles, Bosham 3.0 miles

Address

Mill Pond Crescent, Chichester, West Sussex, PO19

Directions

For directions to this property please contact us.



cubitt&west
Helping you move forwards

Call Chichester Branch 01243 786581 ■ cubittandwest.co.uk



- Legal advice should be taken to verify fixtures/fittings, planning, alterations and/or lease details
- Appliances & services are untested, dimensions are approximate and floor plans are not to scale
- Through a Homewise Home For Life Plan people aged 60+ can secure this property for up to 59% less, by purchasing a Lifetime Lease.

EPC RATING

CURRENT: **B(31)** POTENTIAL: **B(39)**

40415047/20240611/KF/JH