



Guide Price
£620,000

Freehold

4x  3x  4x 

**Fishbourne Road West,
Chichester, West
Sussex, PO19**

OVER 60?

Secure this property
for up to **59% less!**

cubitt & west
Helping you move forwards

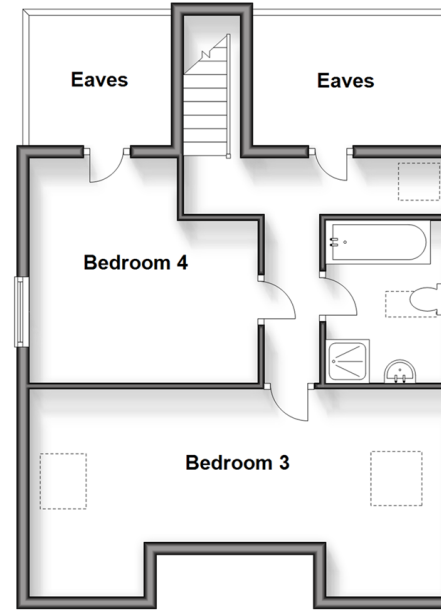
Ground Floor

Approx. 161.0 sq. metres (1733.4 sq. feet)



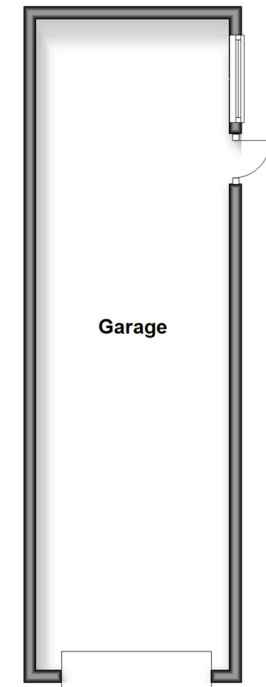
First Floor

Approx. 46.8 sq. metres (503.5 sq. feet)



Outbuilding

Approx. 32.4 sq. metres (348.4 sq. feet)



Accommodation

GROUND FLOOR

Porch & Hallway

Lounge: 15'6 into bay x 12'11 (4.73m x 3.94m)

Family Room: 15'6 into bay x 12'11 (4.73m x 3.94m)

Dining Room: 15'10 x 12'1 (4.83m x 3.69m)

Kitchen: 12'10 x 8'10 (3.91m x 2.69m)

Breakfast Area: 12'0 x 9'2 (3.66m x 2.80m)

Utility Area: 11'11 x 5'0 (3.63m x 1.53m)

Inner Hallway

Conservatory: 20'4 x 8'3 (6.20m x 2.52m)

Bedroom 1: 15'7 x 11'11 (4.75m x 3.63m)

En-Suite Bathroom: 8'3 x 5'5 (2.52m x 1.65m)

Bedroom 2: 11'11 x 9'7 (3.63m x 2.92m)

Bathroom: 7'0 x 4'11 (2.14m x 1.50m)

FIRST FLOOR

Landing

Bedroom 3: 21'11 x 8'0 into alcove (6.68m x 2.44m)

Bedroom 4: 12'0 maximum x 8'4 maximum (3.66m x 2.54m)

Bath & Shower Room: 8'3 x 6'4 (2.52m x 1.93m)

OUTBUILDING

Garage

OUTSIDE

Off Road Parking

Front & Rear Gardens

Greenhouse



Main features

- Large detached bungalow with versatile, bright accommodation
- Modern fitted kitchen with integrated appliances
- Generous front garden with ample off road parking
- Plenty loft storage space as well as double length garage
- Potential to create additional bedroom upstairs (subject to consents)

Nearest Schools

Fishbourne CofE Primary 0.1 miles, Parklands Community Primary 0.9 miles, Central CofE Junior School 1.2 miles, Bishop Luffa C of E School, Chichester 0.5 miles, St Anthony's School 1.3 miles, Chichester High School for Boys 1.5 miles, Chichester College 0.9 miles

Transport Information

Train Stations: Fishbourne 0.3 miles, Chichester 1.2 miles, Bosham 1.7 miles

Address

Fishbourne Road West, Chichester, West Sussex, PO19

Directions

For directions to this property please contact us.



cubitt&west
Helping you move forwards

Call Chichester Branch 01243 786581 ■ cubittandwest.co.uk



- Legal advice should be taken to verify fixtures/fittings, planning, alterations and/or lease details
- Appliances & services are untested, dimensions are approximate and floor plans are not to scale
- Through a Homewise Home For Life Plan people aged 60+ can secure this property for up to 59% less, by purchasing a Lifetime Lease.



40415016/20240509/KF/VB