



Price
£500,000

Freehold

4x  3x  2x 

**North Mead, Chichester,
West Sussex, PO19**

OVER 60?

Secure this property
for up to **59% less!**

cubitt & west
Helping you move forwards



Main features

- Spacious terraced town house in desirable Graylingwell Park development
- Arranged over 3 floors with ample storage
- Boasts a private balcony with views of the chapel
- Light & airy rooms throughout
- Only a short walk to the city centre

Accommodation

GROUND FLOOR

Hallway
 Kitchen/Diner: 18'7 x 8'9 (5.67m x 2.67m)
 Lounge: 18'5 x 11'11 at widest point (5.62m x 3.63m)
 Cloakroom

FIRST FLOOR

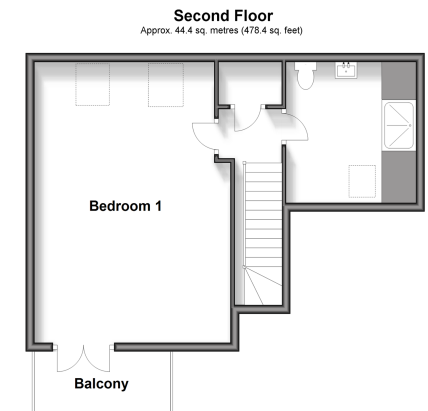
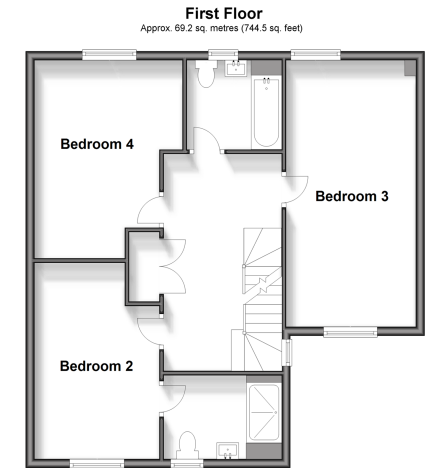
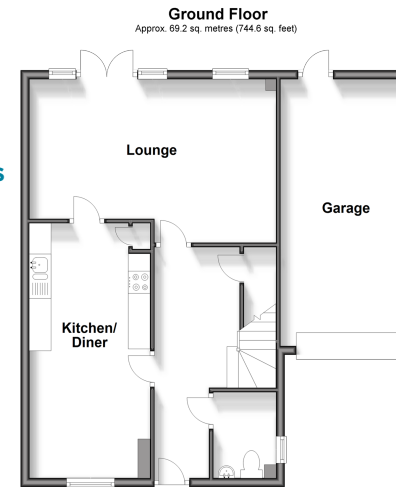
Landing
 Bedroom 2: 14'6 x 9'4 (4.42m x 2.85m)
 En Suite Shower Room
 Bedroom 3: 19'8 x 9'8 (6.00m x 2.95m)
 Bedroom 4: 14'6 x 10'11 at widest point (4.42m x 3.33m)
 Bathroom

SECOND FLOOR

Landing
 Bedroom 1: 20'8 x 14'6 (6.30m x 4.42m)
 Balcony
 Shower Room

OUTSIDE

Integral Garage
 Off Road Parking
 Front & Rear Gardens
 Shed



Call Chichester - 01243 786581 ■ cubittandwest.co.uk

- Legal advice should be taken to verify fixtures/fittings, planning, alterations and/or lease details
- Appliances & services are untested, dimensions are approximate and floor plans are not to scale
- Through a Homewise Home For Life Plan people aged 60+ can secure this property for up to 59% less, by purchasing a Lifetime Lease.



40413523/20240507/VB/JH