



OVER 60?

You could get up to
59% off the price!*

Price
£425,000

Freehold

3x  1x  2x 

**Arundell Way,
Westhampnett,
Chichester, West
Sussex, PO18**

cubitt&west
Helping you move forwards



Main features

- **Spacious semi-detached town house with flexible living spaces**
- **Great sized kitchen/diner with integrated appliances**
- **En-suite to master bedroom and ample storage throughout**
- **Generous sized garden**
- **Remaining years of NHBC**
- **Off-road parking for 2 cars**
- **Close access to Goodwood Estate**

Accommodation

GROUND FLOOR

Entrance Hall

Study: 8'11 x 6'1 (2.72m x 1.86m)

Cloakroom

Kitchen / Diner: 22'10 x 9'8 (6.96m x 2.95m)

FIRST FLOOR

Landing

Lounge: 12'10 x 11'9 (3.91m x 3.58m)

Bedroom 1: 12'11 x 9'11 (3.94m x 3.02m)

En-Suite Shower Room: 5'0 x 3'7 (1.53m x 1.09m)

SECOND FLOOR

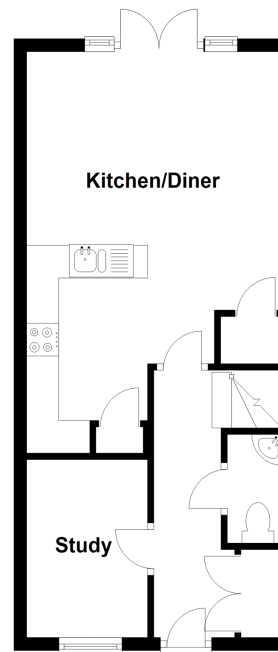
Bedroom 2: 12'9 x 11'6 (3.89m x 3.51m)

Landing

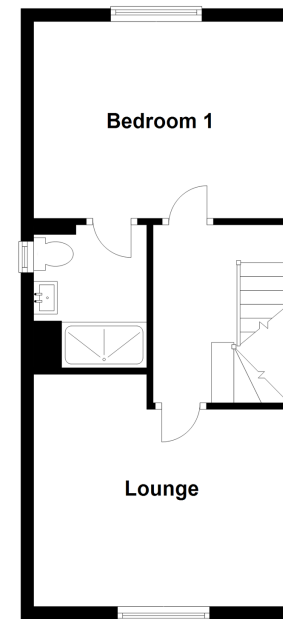
Bedroom 3: 12'10 x 7'3 (3.91m x 2.21m)

Bathroom: 6'4 x 5'9 (1.93m x 1.75m)

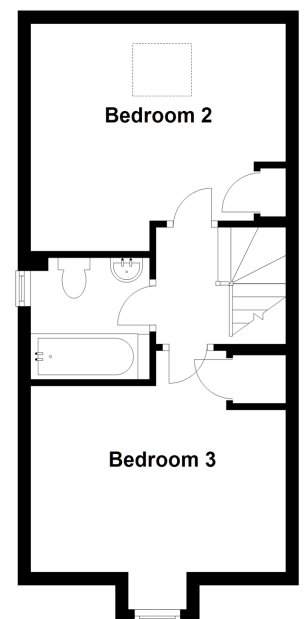
Ground Floor
Approx. 35.9 sq. metres (386.0 sq. feet)



First Floor
Approx. 35.9 sq. metres (386.0 sq. feet)



Second Floor
Approx. 34.1 sq. metres (367.0 sq. feet)



Call Chichester - 01243 786581 ■ cubittandwest.co.uk

- Legal advice should be taken to verify fixtures/fittings, planning, alterations and/or lease details
- Our Homewise partnership offer a 'Home for Life' plan to buyers over 60, granting a lifetime lease for your protection and reducing the purchase price by up to 59%

- Appliances & services are untested, dimensions are approximate and floor plans are not to scale



40414024/20220427/KF/RC