



Guide Price
£350,000

Freehold

2x  1x  1x 

**Morston Close,
Tadworth, Surrey, KT20**

OVER 60?

Secure this property
for up to **59% less!**

cubitt & west
Helping you move forwards



Main features

- Charming 2 bedroom terraced home in sought-after location
- Bright and welcoming living spaces
- Lovely private garden - perfect for relaxing or entertaining
- Rear access to garage en-bloc
- Ideal for first-time buyers, downsizers or investors

Accommodation

GROUND FLOOR

Porch

Kitchen: 11'0 x 7'8 (3.36m x 2.34m)

Lounge: 14'5 x 11'0 (4.40m x 3.36m)

FIRST FLOOR

Bedroom 1: (L-shaped) 9'1 x 7'7 (2.77m x 2.31m) plus 11'2 x 4'3 (3.41m x 1.30m)

Bedroom 2: 7'6 x 6'2 (2.29m x 1.88m)

Bathroom

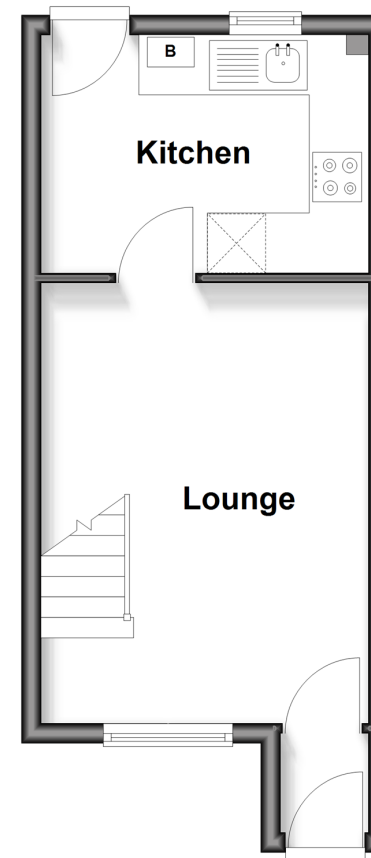
OUTSIDE

Garden

Garage en bloc

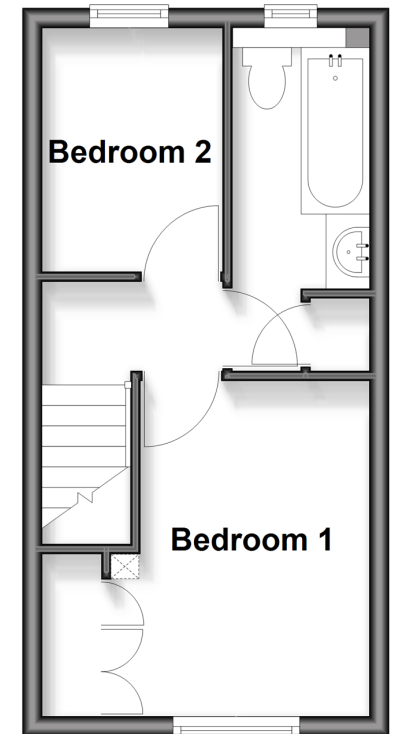
Ground Floor

Approx. 24.2 sq. metres (260.9 sq. feet)



First Floor

Approx. 23.2 sq. metres (250.2 sq. feet)



Call Banstead - 01737 352233 ■ cubittandwest.co.uk

- Legal advice should be taken to verify fixtures/fittings, planning, alterations and/or lease details
- Appliances & services are untested, dimensions are approximate and floor plans are not to scale
- Through a Homewise Home For Life Plan people aged 60+ can secure this property for up to 50% less, by purchasing a Lifetime Lease.



20110133/20251003/SM/LE