



OVER 60?

Secure this property
for up to **59% less!**

Price

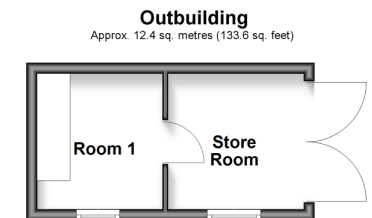
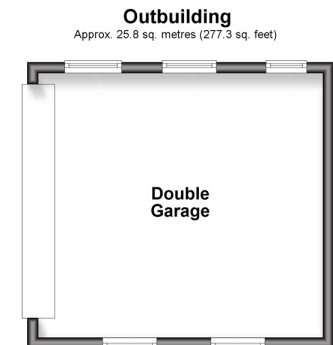
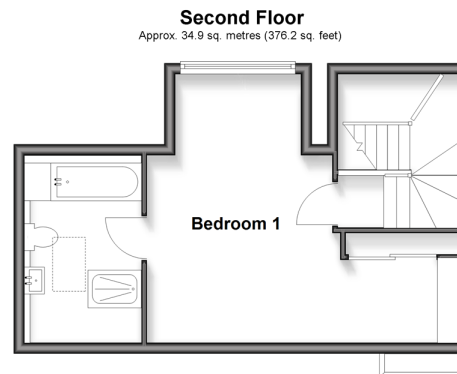
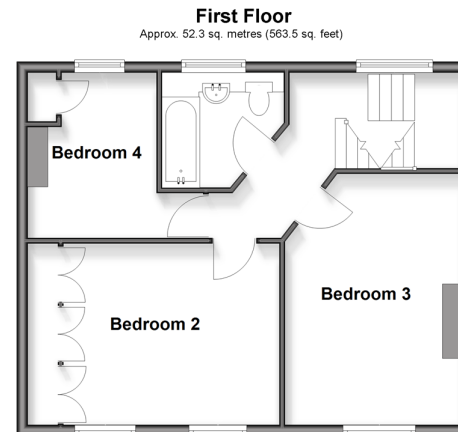
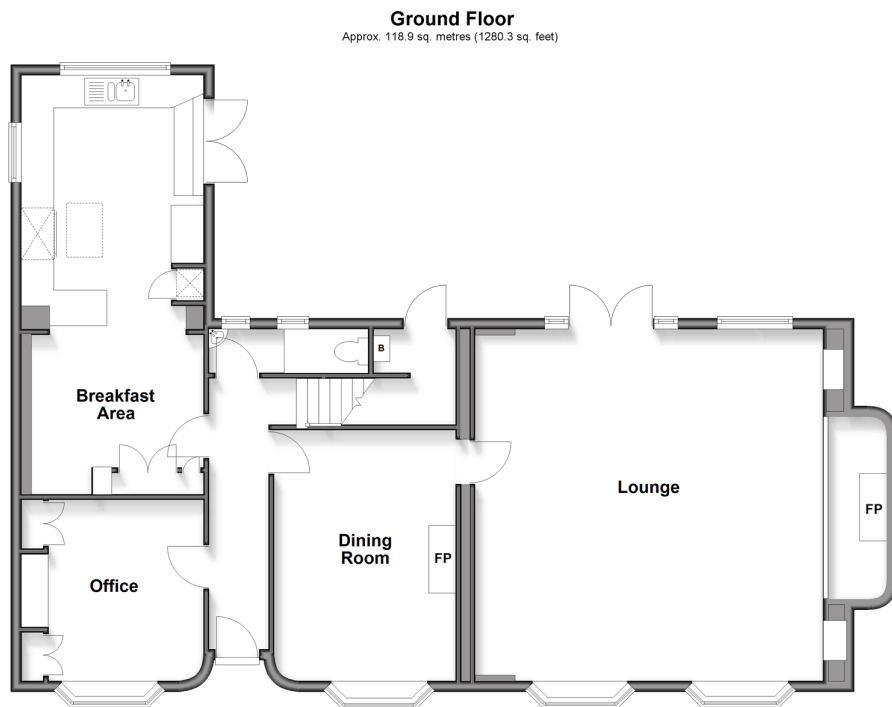
£850,000

Freehold

4x  2x  3x 

**Egmont Way, Tadworth,
Surrey, KT20**

cubitt&west
Helping you move forwards



Accommodation

GROUND FLOOR

Hallway
Office : 11'0 x 11'0 (3.36m x 3.36m)
Kitchen: 15'7 x 10'9 (4.75m x 3.28m)
Breakfast Area: 10'4 x 9'7 (3.15m x 2.92m)
Dining Room: 15'2 x 11'11 (4.63m x 3.63m)
Lounge: 24'7 into recess x 21'8 (7.50m x 6.61m)
Cloakroom

FIRST FLOOR

Landing
Bedroom 2: 15'4 x 11'1 (4.68m x 3.38m)
Bedroom 3: 13'0 up to fitted wardrobes x 11'10 (3.97m x 3.61m)
Bedroom 4 : 10'3 x 6'6 (3.13m x 1.98m)
Bathroom: 15'4 x 11'1 (4.68m x 3.38m)

SECOND FLOOR

Bedroom 1: (L-shaped) 11'8 x 10'3 (3.56m x 3.13m)
plus 16'6 x 16'4 (5.03m x 4.98m)
En Suite Bathroom

OUTBUILDINGS

Room 1: 7'6 x 7'6 (2.29m x 2.29m)
Store Room
Double Garage : 17'7 x 16'1 (5.36m x 4.91m)

OUTSIDE

Rear Garden
Front Garden
Driveway



Main features

- Impressive detached family home tucked away in a quiet cul de sac
- Generous living space downstairs with 3 reception rooms and a kitchen/breakfast room
- Beautiful rear garden with outbuilding and a large patio area
- Driveway for several cars and a double garage
- Chain Free



Nearest Schools

Primary Schools: Epsom Downs Primary and Children's Centre 0.6 miles, Shawley Community Primary 0.7 miles, Tadworth Primary 0.9 miles Secondary Schools: The Beacon School 0.6 miles, St Margaret's School 0.7 miles, Epsom College 1.9 miles



Transport Information

Train Stations: Kingswood 0.7 miles, Tattenham Corner 1.0 miles, Tadworth 1.2 miles



Address

Egmont Way, Tadworth, Surrey, KT20



Directions

For directions to this property please contact us.



cubitt&west
Helping you move forwards

Call Banstead Branch 01737 352233 ■ [cubittandwest.co.uk](https://www.cubittandwest.co.uk)



■ Legal advice should be taken to verify fixtures/fittings, planning, alterations and/or lease details ■ Appliances & services are untested, dimensions are approximate and floor plans are not to scale
■ Through a Homewise Home For Life Plan people aged 60+ can secure this property for up to 50% less, by purchasing a Lifetime Lease.



20109943/20250906/LE/LE