



OVER 60?

Secure this property
for up to **59% less!**

Price
£550,000

Freehold

3x  2x  2x 

**Dover Road, Tadworth,
Surrey, KT20**

cubitt&west
Helping you move forwards



Main features

- Modern end of terrace house
- Own driveway with electric car charging port
- Near to local bus routes and Tattenham Corner train station
- Good selection of local schools and nurseries
- 6 years remaining on NHBC warranty

Accommodation

GROUND FLOOR

Entrance Hall

Kitchen/Diner: 20'6 x 10'2 (6.25m x 3.10m)

Lounge: 19'1 x 10'2 (5.82m x 3.10m)

Cloakroom

FIRST FLOOR

Landing

Bedroom 1: 11'0 x 10'7 (3.36m x 3.23m)

En-Suite Shower Room

Bedroom 2: 11'4 x 10'0 (3.46m x 3.05m)

Bedroom 3: 9'7 x 8'1 (2.92m x 2.47m)

Bathroom

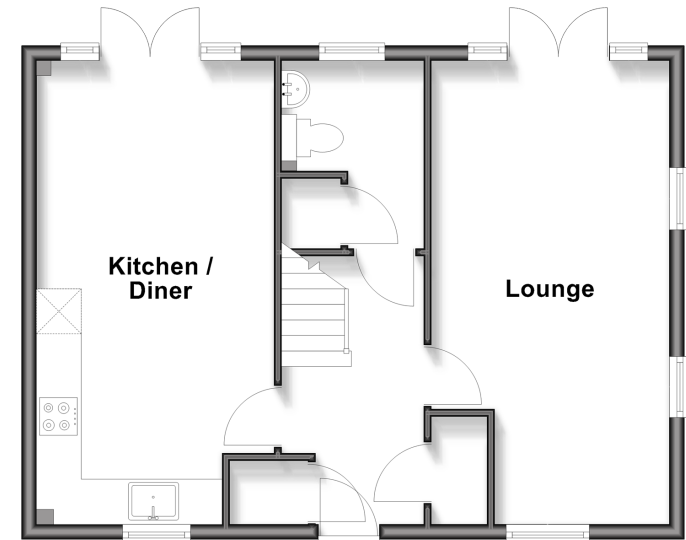
OUTSIDE

Rear Garden

Driveway

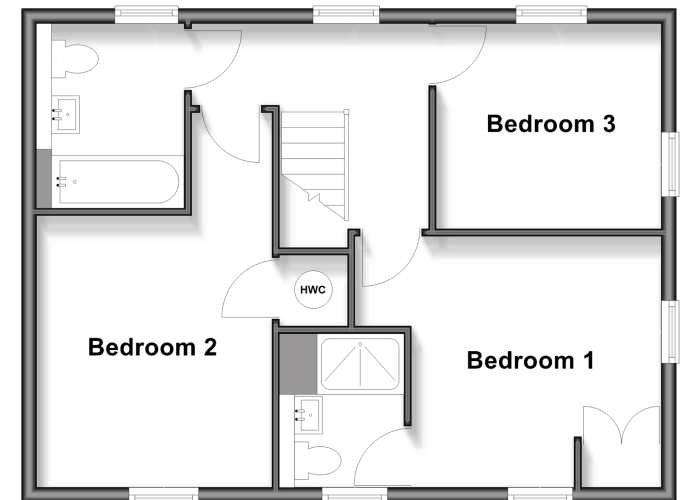
Ground Floor

Approx. 51.0 sq. metres (548.6 sq. feet)



First Floor

Approx. 51.0 sq. metres (548.6 sq. feet)



Call Banstead - 01737 352233 ■ [cubittandwest.co.uk](https://www.cubittandwest.co.uk)

- Legal advice should be taken to verify fixtures/fittings, planning, alterations and/or lease details
- Appliances & services are untested, dimensions are approximate and floor plans are not to scale
- Through a Homewise Home For Life Plan people aged 60+ can secure this property for up to 50% less, by purchasing a Lifetime Lease.



20109853/20250915/OK/OK