

OVER 60?

Secure this property
for up to **59% less!**



Price

£725,000

Freehold

3x  2x  1x 

Chipstead Way, Banstead, Surrey, SM7

cubitt&west
Helping you move forwards

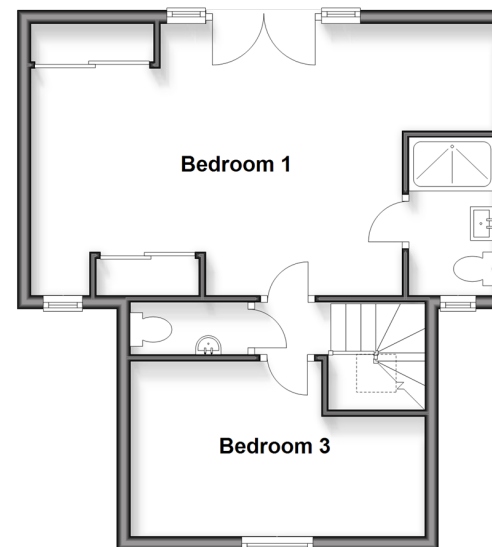
Ground Floor

Approx. 107.1 sq. metres (1152.4 sq. feet)



First Floor

Approx. 43.3 sq. metres (466.0 sq. feet)



Accommodation

GROUND FLOOR

Entrance Porch

Hallway

Kitchen/Dining Area : (L-shaped) 22'7 x 13'5 (6.89m x 4.09m) plus 21'4 x 10'0 (6.51m x 3.05m)

Lounge: 18'2 x 11'0 (5.54m x 3.36m)

Conservatory: 11'2 x 7'10 (3.41m x 2.39m)

Bedroom 2: 13'0 x 11'0 (3.97m x 3.36m)

Bathroom

FIRST FLOOR

Landing

Bedroom 1: 22'4 x 13'4 (6.81m x 4.07m)

En Suite Shower Room

Bedroom 3: 11'5 x 7'3 (3.48m x 2.21m)

Cloakroom

OUTSIDE

Garage

Front & Rear Gardens

Driveway



Main features

- Impressive chalet bungalow
- Beautiful fitted open plan kitchen/dining area
- Spacious main bedroom with Juliette balcony and en-suite shower room
- Catchment of several well regarded primary and secondary schools
- Walking distance to Chipstead and Woodmansterne Train Stations



Nearest Schools

Primary Schools: Chipstead Valley Primary 0.8 miles, Woodmansterne Primary 1.0 miles, St Aidan's Catholic Primary 1.5 miles
Secondary Schools: Greenacre School for Girls 2.1 miles, Surrey Hills School 2.3 miles



Transport Information

Train Stations: Chipstead 0.4 miles, Woodmansterne 0.7 miles, Coulsdon South 1.4 miles



Address

Chipstead Way, Banstead, Surrey, SM7



Directions

For directions to this property please contact us.



cubitt&west
Helping you move forwards

Call Banstead Branch 01737 352233 ■ [cubittandwest.co.uk](https://www.cubittandwest.co.uk)



■ Legal advice should be taken to verify fixtures/fittings, planning, alterations and/or lease details ■ Appliances & services are untested, dimensions are approximate and floor plans are not to scale
■ Through a Homewise Home For Life Plan people aged 60+ can secure this property for up to 59% less, by purchasing a Lifetime Lease.



20110091/20250407/SA/OK