



OVER 60?

Secure this property
for up to **59% less!**

Price

£725,000

Freehold

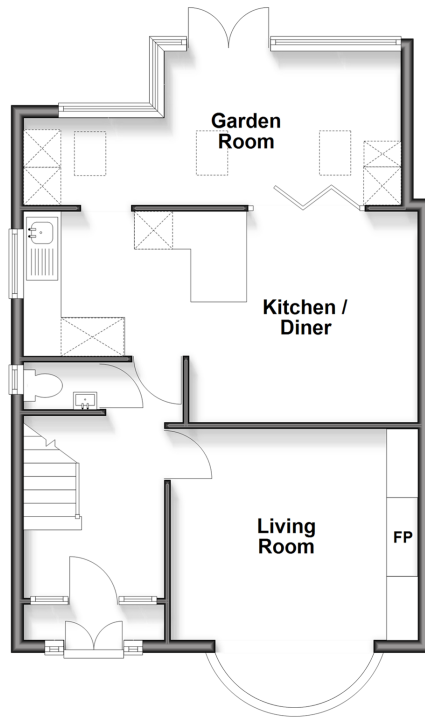
4x  1x  2x 

**Roundwood Way,
Banstead, Surrey, SM7**

cubitt&west
Helping you move forwards

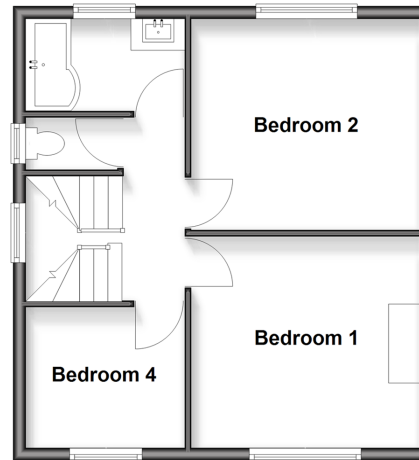
Ground Floor

Approx. 56.3 sq. metres (606.4 sq. feet)



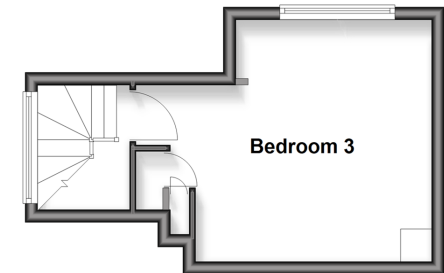
First Floor

Approx. 42.8 sq. metres (460.4 sq. feet)



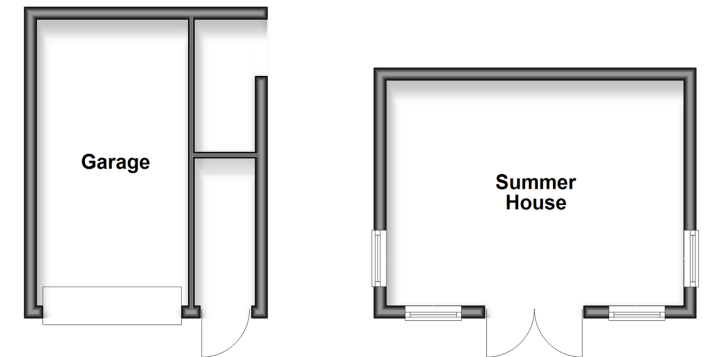
Second Floor

Approx. 18.9 sq. metres (203.8 sq. feet)



Outbuilding

Approx. 32.7 sq. metres (352.4 sq. feet)



Accommodation

GROUND FLOOR

Porch
Entrance Hall
Cloakroom
Living Room: 14'2 into bay x 12'9 (4.32m x 3.89m)
Kitchen/Dining Room: (L-shaped) 20'7 x 11'7 (6.28m x 3.53m) plus 11'1 x 7'6 (3.38m x 2.29m)
Garden Room: (L-shaped) 19'6 x 12'9 (5.95m x 3.89m) plus 8'8 x 5'2 (2.64m x 1.58m)

FIRST FLOOR

Landing
Bedroom 1: 11'5 x 11'2 (3.48m x 3.41m)
Bedroom 2: 12'0 x 10'9 (3.66m x 3.28m)
Bedroom 4 : 8'4 x 7'6 (2.54m x 2.29m)
Bathroom

SECOND FLOOR

Bedroom 3 : 14'1 x 12'5 (4.30m x 3.79m)

OUT BUILDINGS

Summer House: 15'5 x 11'7 (4.70m x 3.53m)
Garage : 15'5 x 7'0 (4.70m x 2.14m)

OUTSIDE

Driveway
Rear Garden



Main features

- Handsome semi detached house on a desirable tree lined road in Nork
- Beautiful mature garden with built in seating and sunken trampoline
- Large Summer house
- Walking distance to Warren Mead school and The Beacon
- Short stroll to Banstead and Epsom Downs Train Stations



Nearest Schools

Primary Schools: Warren Mead Junior School 0.2 miles, Banstead Community Junior School 0.6 miles, St Anne's Catholic Primary 0.8 miles
Secondary Schools: The Beacon School 0.6 miles, Epsom College 1.0 miles, St Margaret's School 1.9 miles



Transport Information

Train Stations: Banstead 0.5 miles, Epsom Downs 0.8 miles, Tattenham Corner 1.4 miles



Address

Roundwood Way, Banstead, Surrey, SM7



Directions

For directions to this property please contact us.



cubitt&west
Helping you move forwards

Call Banstead Branch 01737 352233 ■ [cubittandwest.co.uk](https://www.cubittandwest.co.uk)



■ Legal advice should be taken to verify fixtures/fittings, planning, alterations and/or lease details ■ Appliances & services are untested, dimensions are approximate and floor plans are not to scale
■ Through a Homewise Home For Life Plan people aged 60+ can secure this property for up to 59% less, by purchasing a Lifetime Lease.



20104365/20250329/SA/LE