



**OVER 60?**

Secure this property  
for up to **59% less!**

**Price**

**£425,000**

**Freehold**

2x  2x  2x 

**Fleetwood Close,  
Tadworth, Surrey, KT20**

**cubitt&west**  
Helping you move forwards



## Main features

- Superb terraced house perfect for first time buyers or downsizer
- Historically extended to offer a large kitchen area
- Garage and off road parking
- A fantastic selection of countryside walks, ideal for dog owners!
- Easy access to A217, Tadworth and Kingswood train stations

## Accommodation

### GROUND FLOOR

Hallway

Lounge : 14'0 x 10'5 (4.27m x 3.18m)

Dining Area: 13'5 x 9'6 (4.09m x 2.90m)

Kitchen : 13'8 x 9'7 (4.17m x 2.92m)

### FIRST FLOOR

Landing

Bedroom 1 : 10'4 x 10'3 (3.15m x 3.13m)

Shower Room

Bedroom 2 : 9'7 x 7'1 (2.92m x 2.16m)

Family Bathroom

### OUTSIDE

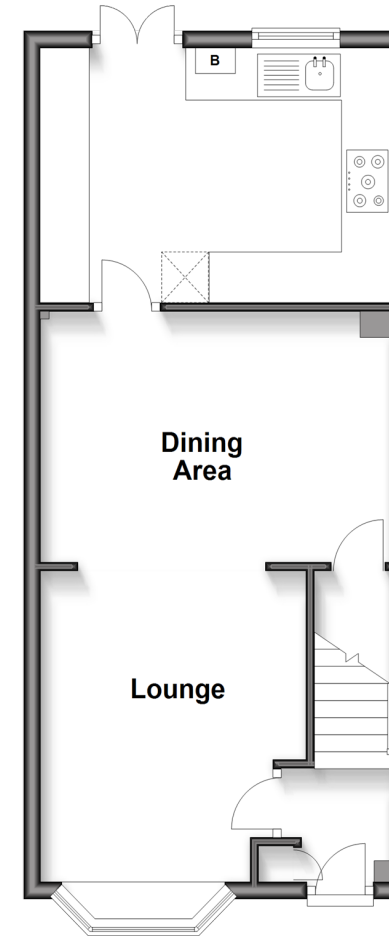
Front and Rear Gardens

Driveway

Garage

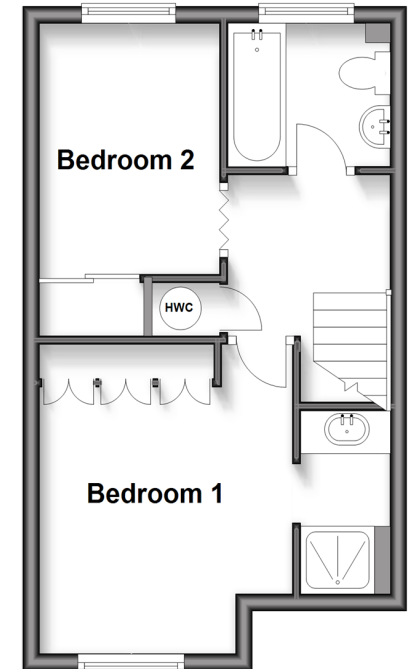
### Ground Floor

Approx. 41.6 sq. metres (447.8 sq. feet)



### First Floor

Approx. 30.0 sq. metres (323.3 sq. feet)



**Call Banstead - 01737 352233 ■ [cubittandwest.co.uk](http://cubittandwest.co.uk)**

- Legal advice should be taken to verify fixtures/fittings, planning, alterations and/or lease details
- Appliances & services are untested, dimensions are approximate and floor plans are not to scale
- Through a Homewise Home For Life Plan people aged 60+ can secure this property for up to 59% less, by purchasing a Lifetime Lease.



20110054/20250318/NP/LE