



Guide Price

£680,000

Freehold

3x  1x  3x 

**Tattenham Way,
Tadworth, Surrey, KT20**

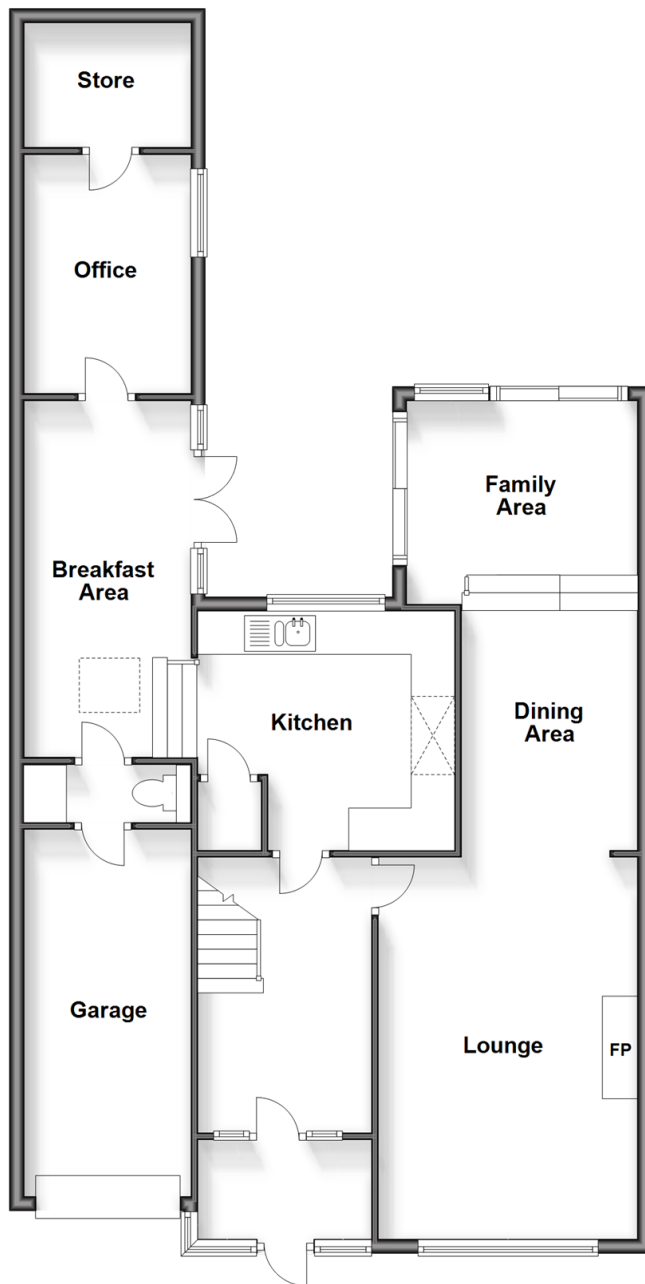
OVER 60?

Secure this property
for up to **59% less!**

cubitt&west
Helping you move forwards

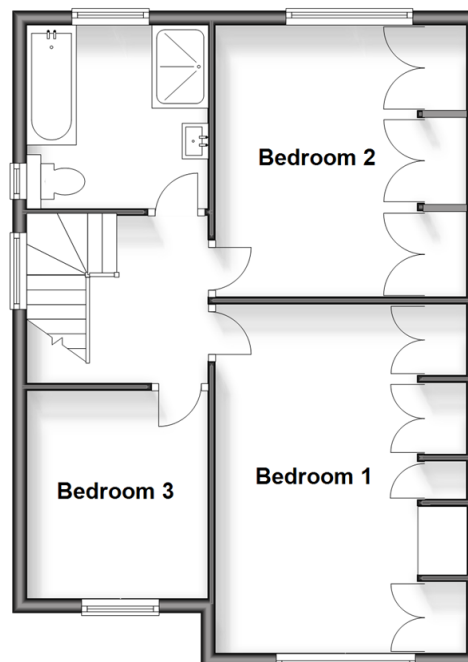
Ground Floor

Approx. 103.8 sq. metres (1117.4 sq. feet)



First Floor

Approx. 52.6 sq. metres (565.9 sq. feet)



Accommodation

GROUND FLOOR

Porch

Entrance Hall

Lounge : 17'5 x 12'1 (5.31m x 3.69m)

Dining Area: 21'3 x 11'1 (6.48m x 3.38m)

Family Area

Kitchen : 11'6 x 11'0 (3.51m x 3.36m)

Breakfast Area: 16'7 x 7'8 (5.06m x 2.34m)

Cloakroom

Office: 11'0 x 7'8 (3.36m x 2.34m)

Store

Garage

FIRST FLOOR

Landing

Bedroom 1: 15'1 x 11'0 (4.60m x 3.36m)

Bedroom 2: 12'6 x 11'0 (3.81m x 3.36m)

Bedroom 3: 9'8 x 8'1 (2.95m x 2.47m)

Family Bathroom

OUTSIDE

Driveway

Front Garden

Large Rear Garden



Main features

- Charming family house ready to move into
- Sunny private garden and patio
- Walking distance to multiple popular schools
- Suburban location with close access to parks and countryside walks
- Large ground floor accommodation offering scope for a separate annexe STPP



Nearest Schools

Primary Schools: Shawley Community Primary 0.5 miles, Epsom Downs Primary and Children's Centre 1.0 miles, St Anne's Catholic Primary 1.2 miles
Secondary Schools: The Beacon School 0.4 miles, Epsom College 1.9 miles



Transport Information

Train Stations: Tattenham Corner 0.9 miles, Epsom Downs 1.0 miles, Banstead 1.2 miles



Address

Tattenham Way, Tadworth, Surrey, KT20



Directions

For directions to this property please contact us.



cubitt&west
Helping you move forwards

Call Banstead Branch 01737 352233 ■ cubittandwest.co.uk



■ Legal advice should be taken to verify fixtures/fittings, planning, alterations and/or lease details ■ Appliances & services are untested, dimensions are approximate and floor plans are not to scale
■ Through a Homewise Home For Life Plan people aged 60+ can secure this property for up to 50% less, by purchasing a Lifetime Lease.



20108059/20251008/LE/OK