

OVER 60?

Secure this property
for up to **59% less!**



Price

£400,000

Leasehold

2x  2x  1x 

Kingswood Grange, Babylon Lane, Lower

Kingswood, Tadworth, Surrey, KT20

cubitt & west
Helping you move forwards



Main features

- Ground floor apartment in immaculate condition with direct access to patio area
- Lounge/diner with dual aspect windows
- Spacious bedrooms
- Allocated parking and visitors spaces
- Well-kept sunny communal gardens

Accommodation

GROUND FLOOR

Entrance Hall

Lounge/Diner : 19'1 x 11'0 (5.82m x 3.36m)

Kitchen : 9'0 x 7'7 (2.75m x 2.31m)

Bedroom 1: 12'2 x 10'1 (3.71m x 3.08m)

En-suite Shower Room

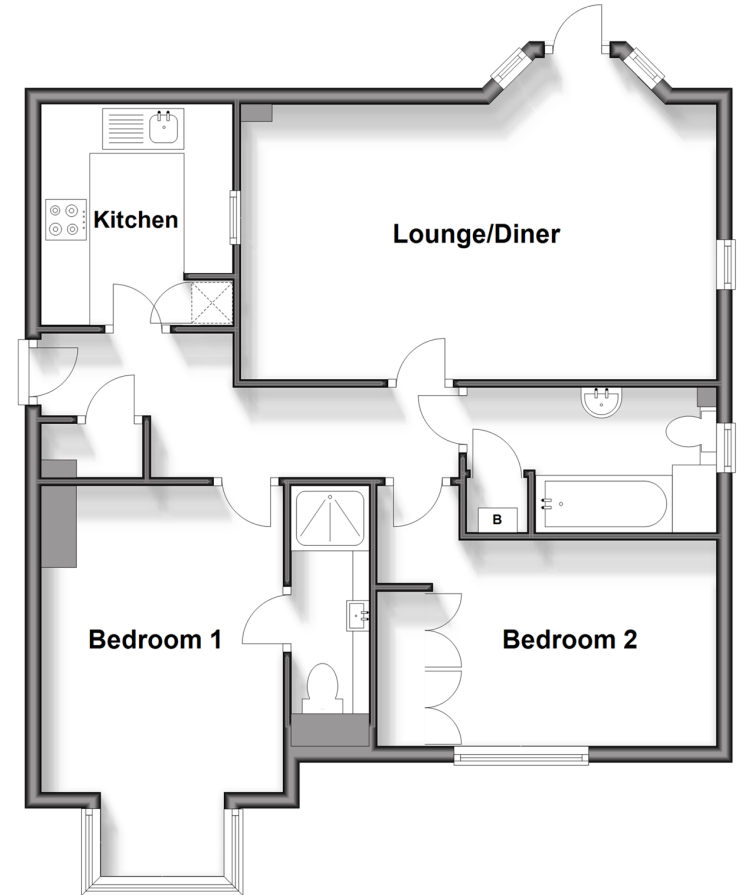
Bedroom 2: 13'5 x 8'1 (4.09m x 2.47m)

Bathroom

OUTSIDE

Communal Gardens
Allocated Parking

Ground Floor
Approx. 77.8 sq. metres (836.9 sq. feet)



Call Banstead - 01737 352233 ■ cubittandwest.co.uk

- Legal advice should be taken to verify fixtures/fittings, planning, alterations and/or lease details
- Appliances & services are untested, dimensions are approximate and floor plans are not to scale
- Through a Homewise Home For Life Plan people aged 60+ can secure this property for up to 59% less, by purchasing a Lifetime Lease.



20109980/20241008/SA/SB