



OVER 60?

Secure this property
for up to **59% less!**

Price
£700,000

Freehold

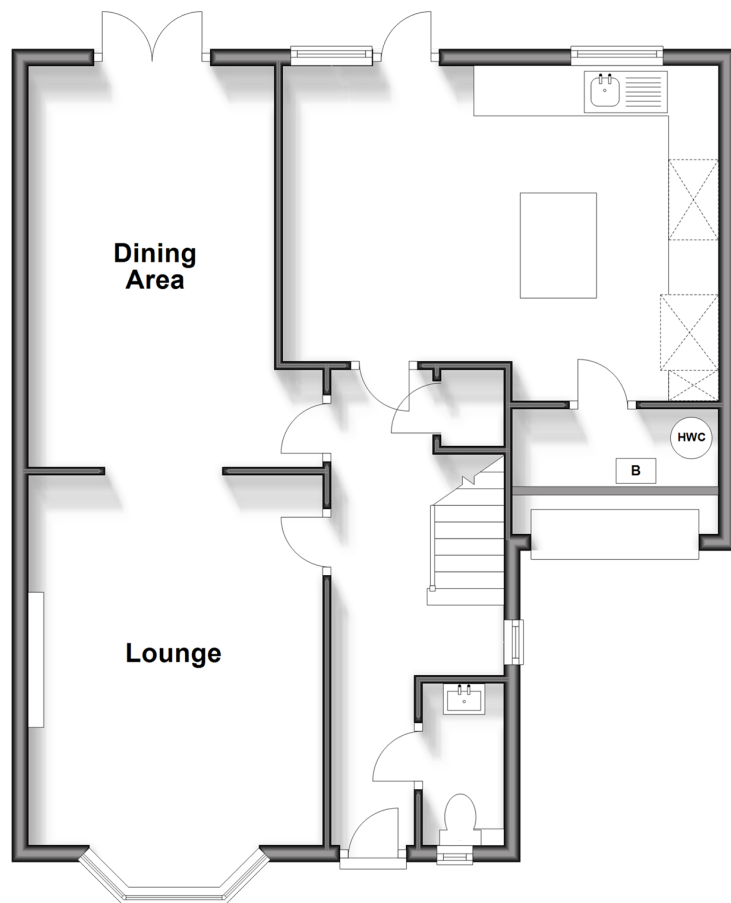
4x  1x  2x 

**Beaconsfield Road,
Epsom, Surrey, KT18**

cubitt & west
Helping you move forwards

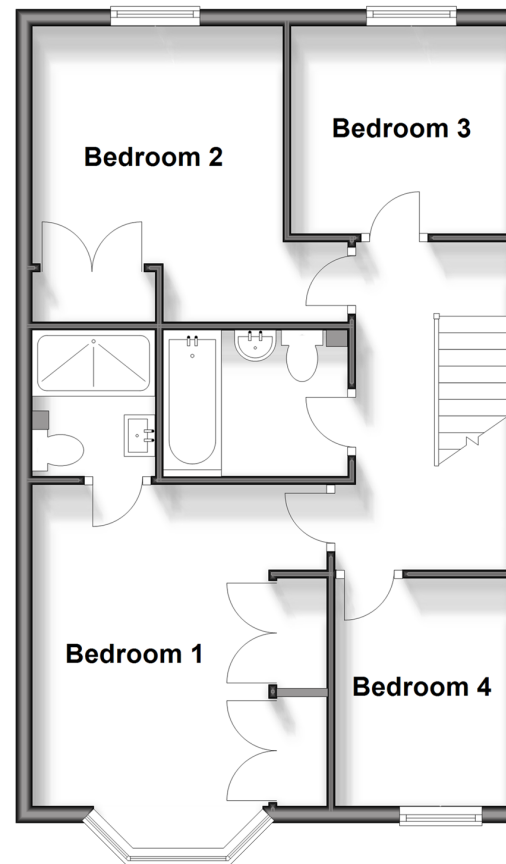
Ground Floor

Approx. 68.6 sq. metres (738.1 sq. feet)



First Floor

Approx. 54.0 sq. metres (581.4 sq. feet)



Accommodation

GROUND FLOOR

Hallway
Lounge: 16'5 x 11'9 (5.01m x 3.58m)
Dining area : 15'10 x 9'10 (4.83m x 3.00m)
Kitchen: 11'8 x 8'9 (3.56m x 2.67m)
Cloakroom

FIRST FLOOR

Landing
Bedroom 1: 14'6 x 11'7 (4.42m x 3.53m)
En-Suite Shower Room
Bedroom 2: 11'8 x 10'0 (3.56m x 3.05m)
Bedroom 3: 8'9 x 8'5 (2.67m x 2.57m)
Bedroom 4: 8'9 x 7'1 (2.67m x 2.16m)
Bathroom

OUTSIDE

Front Garden
Rear Garden
Garage
Off-Road Parking



Main features

- Beautiful family home
- Large open plan kitchen with utility room
- Local schooling and train links
- A beautiful garden, front and rear
- A driveway to fit multiple cars

Nearest Schools

Primary Schools: The Vale Primary 0.0 miles, Epsom Downs Primary and Children's Centre 1.2 miles, Shawley Community Primary 1.3 miles
Secondary Schools: City of London Freemans' School 1.1 miles, St Margaret's School 1.6 miles, Epsom College 1.7

Transport Information

Train Stations: Tattenham Corner 0.8 miles, Tadworth 1.4 miles, Epsom Downs 1.5 miles

Address

Beaconsfield Road, Epsom, Surrey, KT18

Directions

For directions to this property please contact us.



cubitt&west
Helping you move forwards

Call Banstead Branch 01737 352233 ■ [cubittandwest.co.uk](https://www.cubittandwest.co.uk)



- Legal advice should be taken to verify fixtures/fittings, planning, alterations and/or lease details
- Appliances & services are untested, dimensions are approximate and floor plans are not to scale
- Through a Homewise Home For Life Plan people aged 60+ can secure this property for up to 59% less, by purchasing a Lifetime Lease.



20109806/20241012/SA/SB