



Guide Price
£300,000

Leasehold

2x  1x  1x 

**Home Farm Close,
Tadworth, Surrey, KT20**

OVER 60?

Secure this property
for up to **59% less!**

cubitt&west
Helping you move forwards



Main features

- Beautifully presented ground floor maisonette
- Spacious throughout with plenty of storage
- Direct access via the kitchen to a small patio and communal gardens
- Garage en bloc and parking
- Surrounded by several parks and woodland walks

Accommodation

GROUND FLOOR

Entrance Hall

Lounge : 15'9 x 10'8 (4.80m x 3.25m)

Bedroom 1: 11'1 x 10'8 (3.38m x 3.25m)

Bedroom 2: 12'0 x 7'9 (3.66m x 2.36m)

Kitchen: 10'5 x 7'8 (3.18m x 2.34m)

Bathroom

OUTSIDE

Patio area

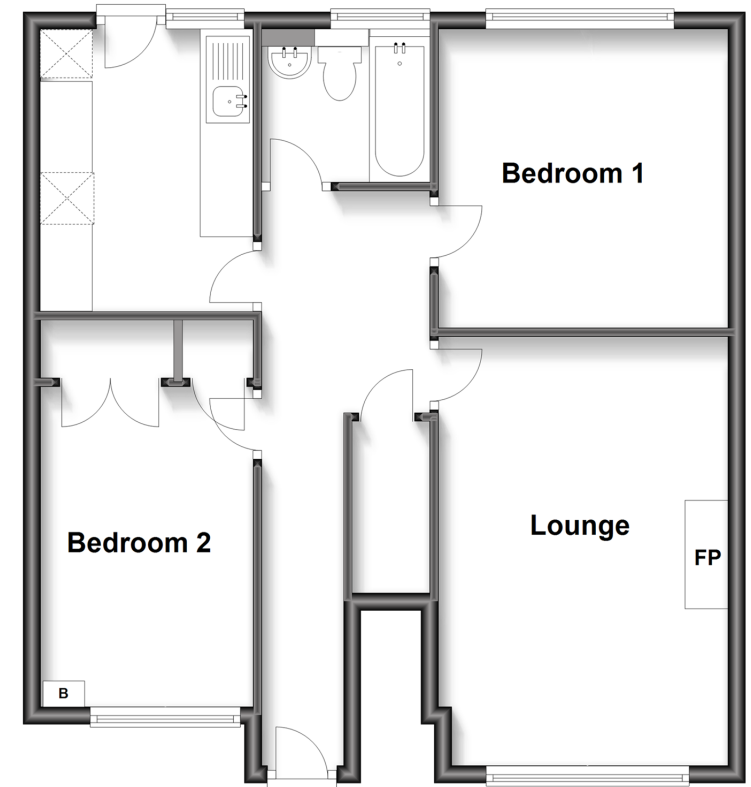
Communal Gardens

Garage en bloc

Residents parking

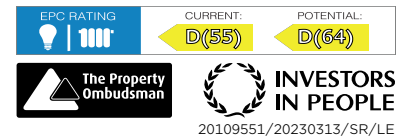
Ground Floor

Approx. 63.5 sq. metres (683.4 sq. feet)



Call Banstead - 01737 352233 ■ cubittandwest.co.uk

- Legal advice should be taken to verify fixtures/fittings, planning, alterations and/or lease details
- Appliances & services are untested, dimensions are approximate and floor plans are not to scale
- Through a Homewise Home For Life Plan people aged 60+ can secure this property for up to 59% less, by purchasing a Lifetime Lease.



20109551/20230313/SR/LE