



OVER 60?

Secure this property
for up to **59% less!**



Video Tour available

Price

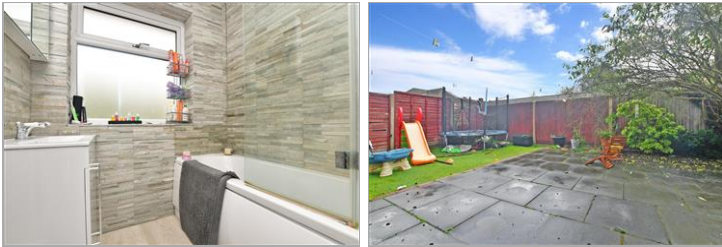
£500,000

Freehold

4x 1x 2x

**Heathdene, Brighton
Road, Lower
Kingswood, Tadworth,
Surrey, KT20**

cubitt&west
Helping you move forwards



Main features

- Deceptively spacious house with lots of potential
- Garage & driveway
- Modern kitchen/dining area
- Countryside walks just a short stroll away
- Easy access to M25
- Perfectly located for access to schools

Accommodation

GROUND FLOOR

Entrance Hall

Lounge: 15'9 x 11'8 (4.80m x 3.56m)

Dining Area: 26'3 x 9'9 (8.01m x 2.97m)

Kitchen

Toilet

FIRST FLOOR

Landing

Bedroom 1: 15'2 x 11'3 (4.63m x 3.43m)

Bedroom 2: 11'9 x 10'0 (3.58m x 3.05m)

Bedroom 3: 10'9 x 8'5 (3.28m x 2.57m)

Bedroom 4: 14'8 x 7'6 (4.47m x 2.29m)

Bathroom

Separate Toilet

OUTSIDE

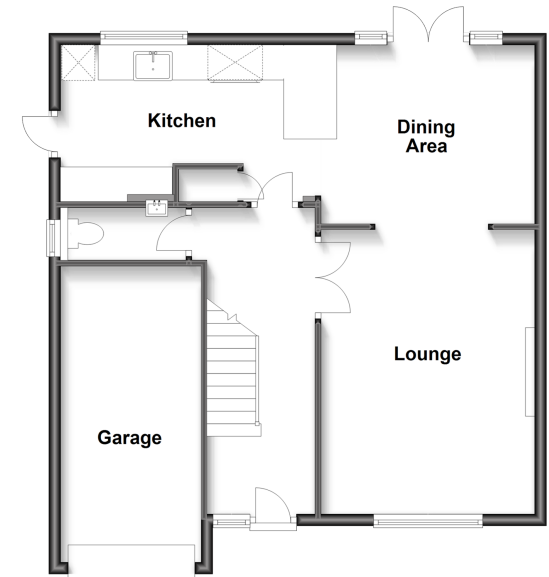
Integral Garage

Driveway

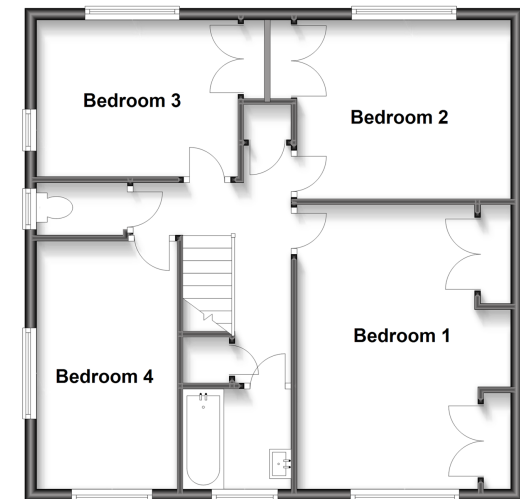
Front Garden

Rear Garden

Ground Floor
Approx. 66.1 sq. metres (711.6 sq. feet)



First Floor
Approx. 64.8 sq. metres (697.5 sq. feet)



Call Banstead - 01737 352233 ■ cubittandwest.co.uk

- Legal advice should be taken to verify fixtures/fittings, planning, alterations and/or lease details
- Appliances & services are untested, dimensions are approximate and floor plans are not to scale
- Through a Homewise Home For Life Plan people aged 60+ can secure this property for up to 59% less, by purchasing a Lifetime Lease.



20109360/20230313/SR/LE