



Price
£750,000

Freehold

4x  3x  1x 

**Brewery Hill, Arundel,
West Sussex, BN18**

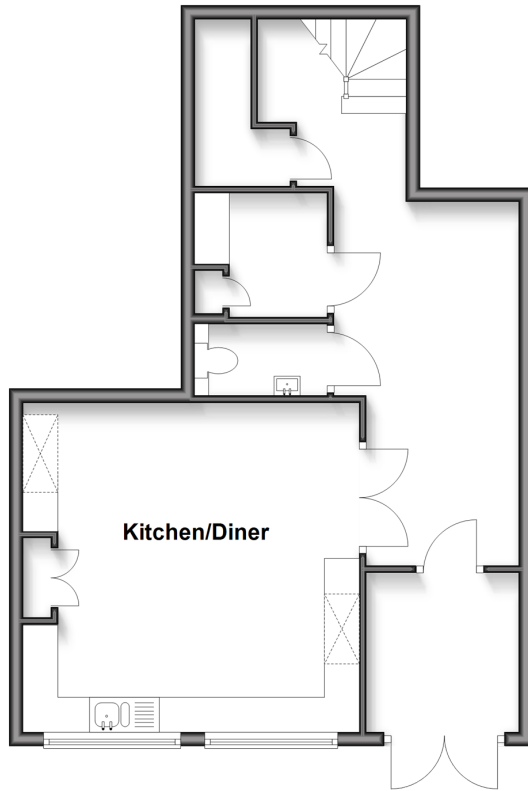
OVER 60?

Secure this property
for up to **59% less!**

cubitt & west
Helping you move forwards

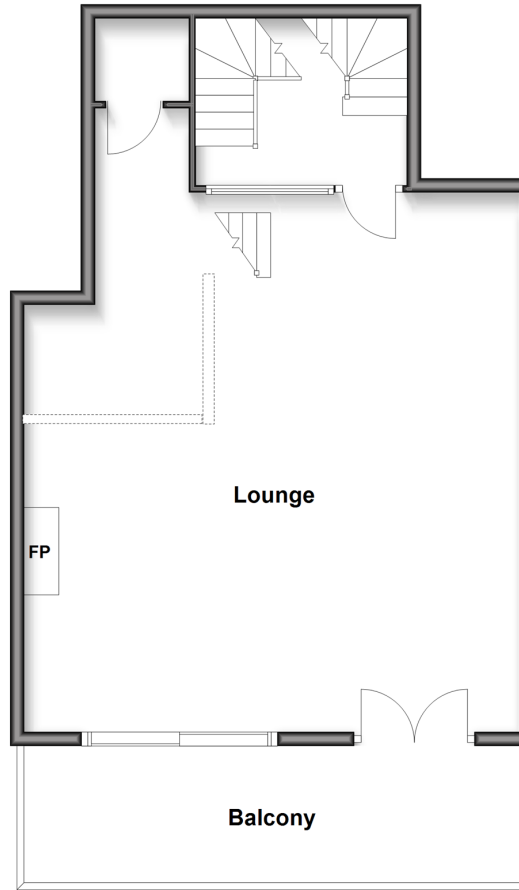
Split Level Ground Floor

Approx. 54.9 sq. metres (590.5 sq. feet)



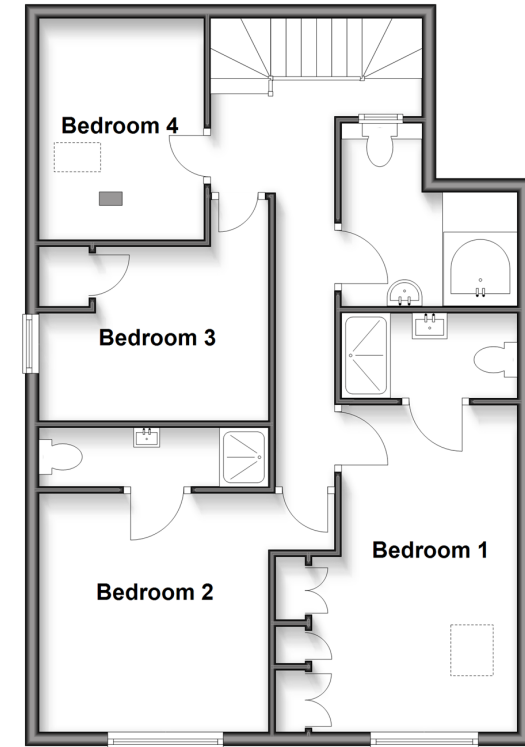
Split Level First Floor

Approx. 64.4 sq. metres (693.2 sq. feet)



Second Floor

Approx. 66.6 sq. metres (716.7 sq. feet)



Accommodation

GROUND FLOOR

Entrance Hall: 17'5 x 8'7 (5.31m x 2.62m)

Kitchen / Dining Room: 15'8 x 15'8 (4.78m x 4.78m)

Ground Floor WC

Utility Room

FIRST FLOOR

First Floor Landing

Lounge: 22'1 x 10'5 maximum (6.74m x 3.18m)

Mezzanine Floor

SECOND FLOOR

Bedroom 1: 15'5 maximum x 11'11 maximum (4.70m x 3.63m)

Ensuite Shower Room

Bedroom 2: 14'11 x 11'3 (4.55m x 3.43m)

Ensuite Shower Room

Bedroom 3: 12'6 x 8'0 (3.81m x 2.44m)

Bedroom 4: 10'3 x 8'0 (3.13m x 2.44m)

Bathroom

OUTSIDE

Balcony

2 Parking Spaces



Main features

- Unique three storey design with flexible layout across three floors
- Prime Arundel Location, in the heart of the town centre
- First floor balcony, picturesque rooftop views
- Luxurious main bedroom & guest bedroom with en suite shower rooms & stunning views
- Flying freehold affects this property- please make enquiries



Nearest Schools

Primary Schools: St Philip's Catholic Primary, Arundel 0.2 miles, Arundel CoFE Primary 0.7 miles.

Secondary Schools: St Philip Howard Catholic High School 6.2 Miles, Bishop Luffa Catholic High School 11.3 miles



Transport Information

Train Stations: Arundel 0.6 miles, Ford 1.9 miles, Amberley 3.0 miles



Address

Brewery Hill, Arundel, West Sussex, BN18



Directions

For directions to this property please contact us.



cubitt&west
Helping you move forwards

Call Arundel Branch 01903 884420 ■ cubittandwest.co.uk



- Legal advice should be taken to verify fixtures/fittings, planning, alterations and/or lease details
- Appliances & services are untested, dimensions are approximate and floor plans are not to scale
- Through a Homewise Home For Life Plan people aged 60+ can secure this property for up to 59% less, by purchasing a Lifetime Lease.



23217987/20250611/IB/DW