



Guide Price
£875,000
Freehold

2x  2x  3x 

Hedgers Hill, Walberton, Arundel, West
Sussex, BN18

cubitt&west
Helping you move forwards

Ground Floor

Approx. 115.2 sq. metres (1239.8 sq. feet)



Accommodation

GROUND FLOOR

Living Room: 23'7 x 14'10 (7.19m x 4.52m)

Dining Room: 14'4 x 8'7 (4.37m x 2.62m)

Kitchen/Breakfast Room: 19'1 x 15'0 (5.82m x 4.58m)

Utility Room

Cloakroom

Cloaks Cupboard: 7'1 x 5'11 (2.16m x 1.80m)

Garden Room: 17'8 x 10'11 (5.39m x 3.33m)

FIRST FLOOR

First Floor Landing

Bedroom 1: 15'10 x 10'3 (4.83m x 3.13m)

Bath and Shower Room

Bedroom 2: 15'3 x 14'10 (4.65m x 4.52m)

En Suite Bath and Shower Room

OUTSIDE

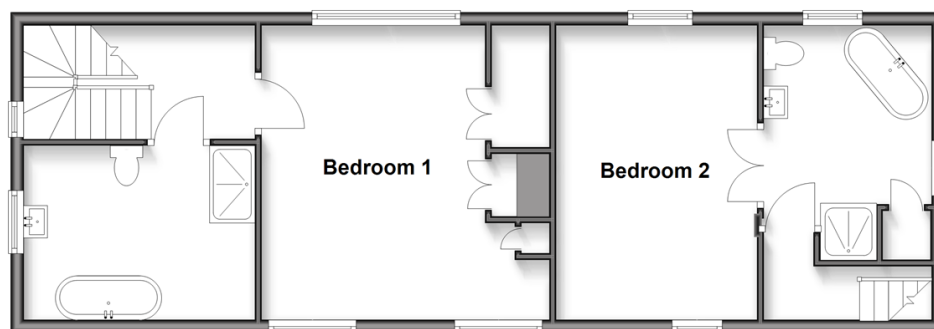
Triple Garage: 29'8 x 25'1 (9.05m x 7.65m)

Garden Studio: 17'6 x 10'2 (5.34m x 3.10m)

Extensive Gardens

First Floor

Approx. 63.8 sq. metres (687.1 sq. feet)





Main features

- Guide Price between 900,000 to 1,000,000
- Charming Grade II listed 16th Century Cottage blending historic charm with modern comforts
- Breathtaking views across undulating hills
- Luxurious bathrooms with roll top baths
- Delightful cottage gardens, beautifully landscaped and planted with attractive paved terraces and seating areas



Nearest Schools

Primary Schools: Walberton and Binsted CofE 0.4 miles, Slindon CofE 1.1 miles Secondary: St Philip Howard Catholic High School, Ormiston Six Villages Prep: The Prebendal, Dorset House, Windlesham House, Great Ballard Senior: Lancing College, Seaford College



Transport Information

Train Stations: Barnham 1.7 miles, Ford 2.0 miles, Arundel 2.9 miles



Address

Hedgers Hill, Walberton, Arundel, West Sussex, BN18



Directions

For directions to this property please contact us.



cubitt&west
Helping you move forwards

Call Arundel Branch 01903 884420 ■ cubittandwest.co.uk



■ Legal advice should be taken to verify fixtures/fittings, planning, alterations and/or lease details ■ Appliances & services are untested, dimensions are approximate and floor plans are not to scale



23217991/20250801/RH/DW