



Guide Price
£575,000

Freehold

4x  1x  2x 

**Ford Road, Arundel,
West Sussex BN18**

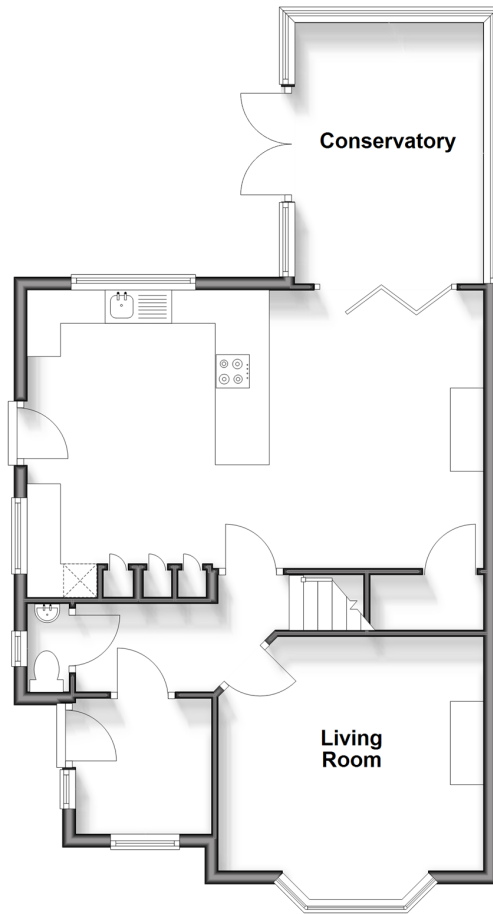
OVER 60?

Secure this property
for up to **59% less!**

cubitt&west
Helping you move forwards

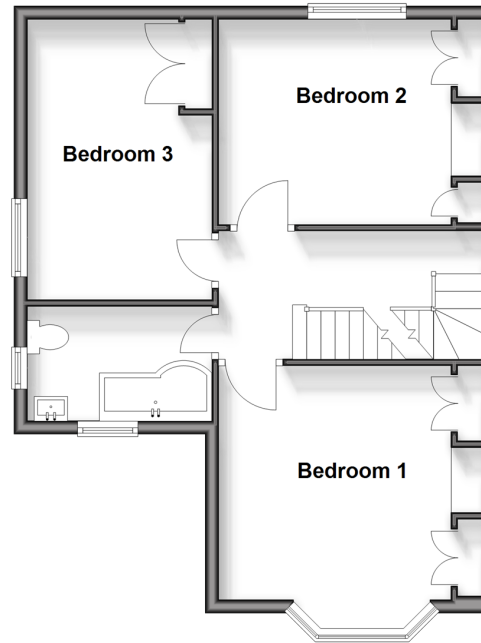
Ground Floor

Approx. 68.2 sq. metres (734.0 sq. feet)



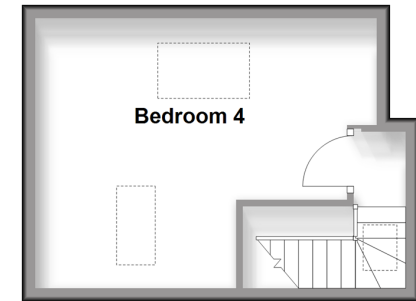
First Floor

Approx. 52.2 sq. metres (562.4 sq. feet)



Second Floor

Approx. 21.7 sq. metres (233.6 sq. feet)



Accommodation

GROUND FLOOR

Entrance Porch: 6'9 x 6'8 (2.06m x 2.03m)

Cloakroom

Living Room: 13'8 x 13'0 (4.17m x 3.97m)

Kitchen/Dining Area: 21'1 x 13'8 (6.43m x 4.17m)

Conservatory: 12'8 x 9'7 (3.86m x 2.92m)

FIRST FLOOR

Landing

Bedroom 1: 13'8 x 12'0 (4.17m x 3.66m)

Bedroom 2: 11'10 x 10'7 (3.61m x 3.23m)

Bedroom 3: 13'9 x 8'6 (4.19m x 2.59m)

Bathroom: 8'5 x 6'6 (2.57m x 1.98m)

SECOND FLOOR

Bedroom 4: 16'10 maximum x 13'3 maximum (5.13m x 4.04m)

OUTSIDE

Front Garden

Rear Garden

Garage: 20'8 x 9'2 (6.30m x 2.80m)

Off-Road Parking



Main features

- Stunning semi-detached house with garage & ample off road parking
- Sizeable garden with lovely patio area
- Gorgeous views over the surrounding countryside
- Modern kitchen with integrated appliances
- Close to the historic town of Arundel with all its shops & amenities
- Close to the local schools



Nearest Schools

Arundel CofE Primary 0.4 miles, St Philip's Catholic Primary, Arundel 0.5 miles, Flora McDonald Junior School 2.3 miles, Cornfield School, Littlehampton 2.4 miles, Littlehampton Community School, The 2.6 miles, Slindon College 3.3 miles, Angmering School, The 4.0 miles



Transport Information

Train Stations: Arundel 0.9 miles, Ford 1.3 miles, Littlehampton 2.8 miles



Address

Ford Road, Arundel, West Sussex BN18



Directions

For directions to this property please contact us.



cubitt&west
Helping you move forwards

Call Arundel Branch 01903 884420 ■ cubittandwest.co.uk



- Legal advice should be taken to verify fixtures/fittings, planning, alterations and/or lease details
- Appliances & services are untested, dimensions are approximate and floor plans are not to scale
- Through a Homewise Home For Life Plan people aged 60+ can secure this property for up to 59% less, by purchasing a Lifetime Lease.



23217685/20250131/DW/DW