



Guide Price
£595,000

Freehold

3x  2x  1x 

**Tarrant Wharf, Arundel,
West Sussex, BN18**

OVER 60?

Secure this property
for up to **59% less!**

cubitt&west
Helping you move forwards

Accommodation

GROUND FLOOR

Entrance hall

Cloakroom: 5'8 x 2'10 (1.73m x 0.86m)

Bedroom 3: 14'0 x 11'10 (4.27m x 3.61m)

FIRST FLOOR

Landing

Kitchen/Diner: 15'10 x 14'0 (4.83m x 4.27m)

Living area: 13'11 x 11'10 (4.24m x 3.61m)

SECOND FLOOR

Landing

Bedroom 1: 13'11 x 11'10 (4.24m x 3.61m)

En Suite Shower Room: 6'3 x 2'10 (1.91m x 0.86m)

Bedroom 2: 11'6 x 9'10 up to fitted wardrobes (3.51m x 3.00m)

Bathroom: 7'5 x 5'6 (2.26m x 1.68m)

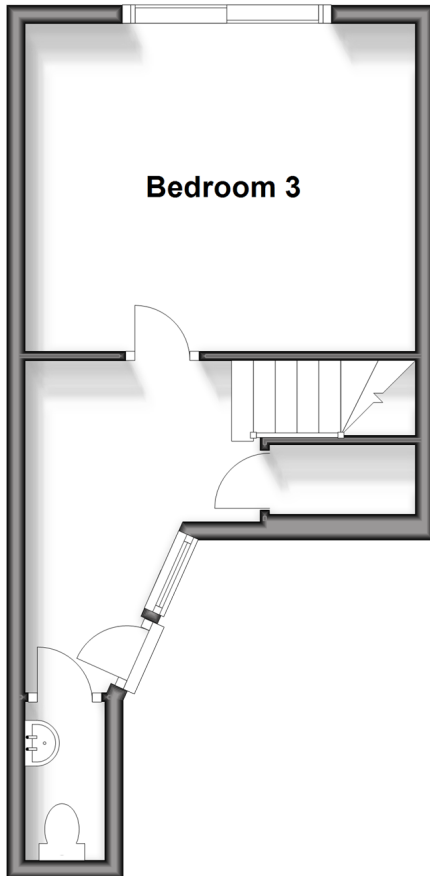
OUTSIDE

Car port

Courtyard Garden

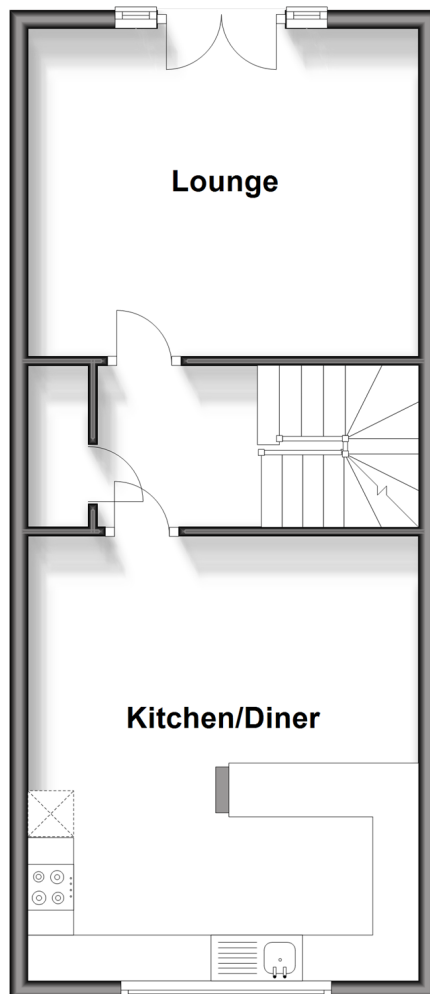
Ground Floor

Approx. 27.2 sq. metres (293.0 sq. feet)



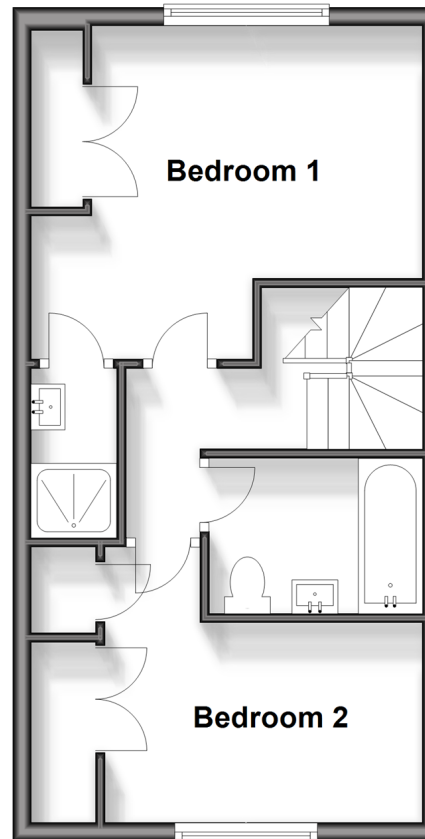
First Floor

Approx. 44.3 sq. metres (476.6 sq. feet)



Second Floor

Approx. 37.1 sq. metres (399.0 sq. feet)





Main features

- Modern Town house on desirable private development with covered parking
- Sunny lounge with Juliet balcony overlooking the River Arun and pleasant views
- Low maintenance peaceful waterside courtyard garden ideal for alfresco dining
- Flexible accommodation with study potential
- Stones throw away from hustle & bustle of historic town centre



Nearest Schools

Primary Schools: St Philip's Catholic Primary Arundel 0.2 miles, Arundel CofE Primary 0.6 miles
Secondary Schools: St Philip Howard Catholic High School Barnham 6.5 miles, Bishop Luffa CofE Secondary School 6.5 miles



Transport Information

Train Stations: Arundel 0.6 miles, Ford 1.8 miles, Littlehampton 3.0 miles



Address

Tarrant Wharf, Arundel, West Sussex, BN18



Directions

For directions to this property please contact us.



cubitt&west
Helping you move forwards

Call Arundel Branch 01903 884420 ■ cubittandwest.co.uk



- Legal advice should be taken to verify fixtures/fittings, planning, alterations and/or lease details
- Appliances & services are untested, dimensions are approximate and floor plans are not to scale
- Through a Homewise Home For Life Plan people aged 60+ can secure this property for up to 59% less, by purchasing a Lifetime Lease.



23216268/20241115/DW/RH