



Price

£240,000

Freehold

2x  1x  1x 

**Johnson Way, Ford,
Arundel, West Sussex,
BN18**

cubitt&west
Helping you move forwards



Main features

- Spacious end of terrace house with allocated parking
- Great sized rear garden
- Quiet residential area in sought-after location
- Only a short drive to the seafront
- Regular market & car boot sales held on Ford Airfield

Accommodation

GROUND FLOOR

Entrance Porch: 5'8 x 3'2 (1.73m x 0.97m)

Living Room: 13'7 x 9'8 (4.14m x 2.95m)

Kitchen / Diner: 13'0 x 8'10 (3.97m x 2.69m)

FIRST FLOOR

Landing

Bedroom 1: 14'8 into alcove x 10'2 (4.47m x 3.10m)

Bedroom 2: 11'6 x 6'11 (3.51m x 2.11m)

Bathroom: 6'4 x 6'2 (1.93m x 1.88m)

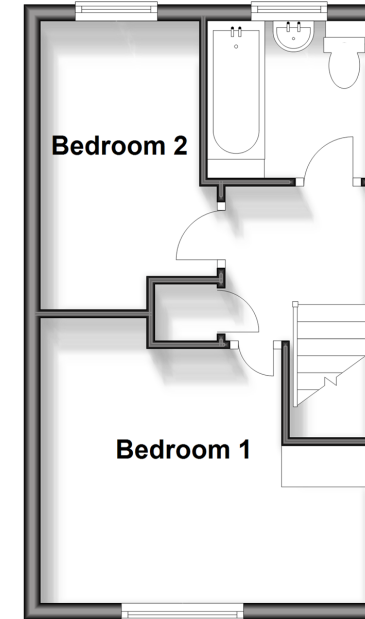
OUTSIDE

Front & Rear Gardens

Allocated Parking

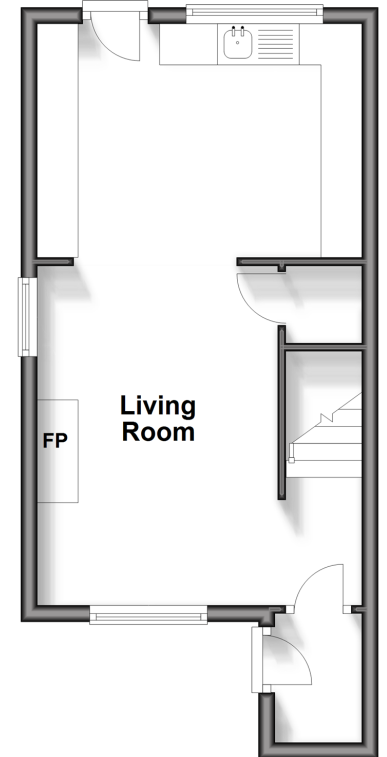
First Floor

Approx. 28.1 sq. metres (302.3 sq. feet)



Ground Floor

Approx. 29.9 sq. metres (321.4 sq. feet)



Call Arundel - 01903 884420 ■ cubittandwest.co.uk

- Legal advice should be taken to verify fixtures/fittings, planning, alterations and/or lease details
- Appliances & services are untested, dimensions are approximate and floor plans are not to scale



23217839/20241012/RH/DW