

OVER 60?

Secure this property
for up to **59% less!**



Price

£200,000

Leasehold

1x  1x  1x 

Exmoor Court, Hermitage Lane, Fontwell,
Arundel, West Sussex, BN18

cubitt & west
Helping you move forwards



Main features

- Immaculately presented second floor flat with ample storage
- Benefits from allocated parking
- Light & airy accommodation throughout
- Lovely communal grounds including access to tennis courts
- Ideal first home or investment opportunity

Accommodation

SECOND FLOOR

Entrance Hall

Lounge/Kitchen: 20'7 into bay x 17'1 at widest point (6.28m x 5.21m)

Bedroom: 14'1 into bay (4.30m) narrowing to 10'4 (3.15m) x 11'2 (3.41m)

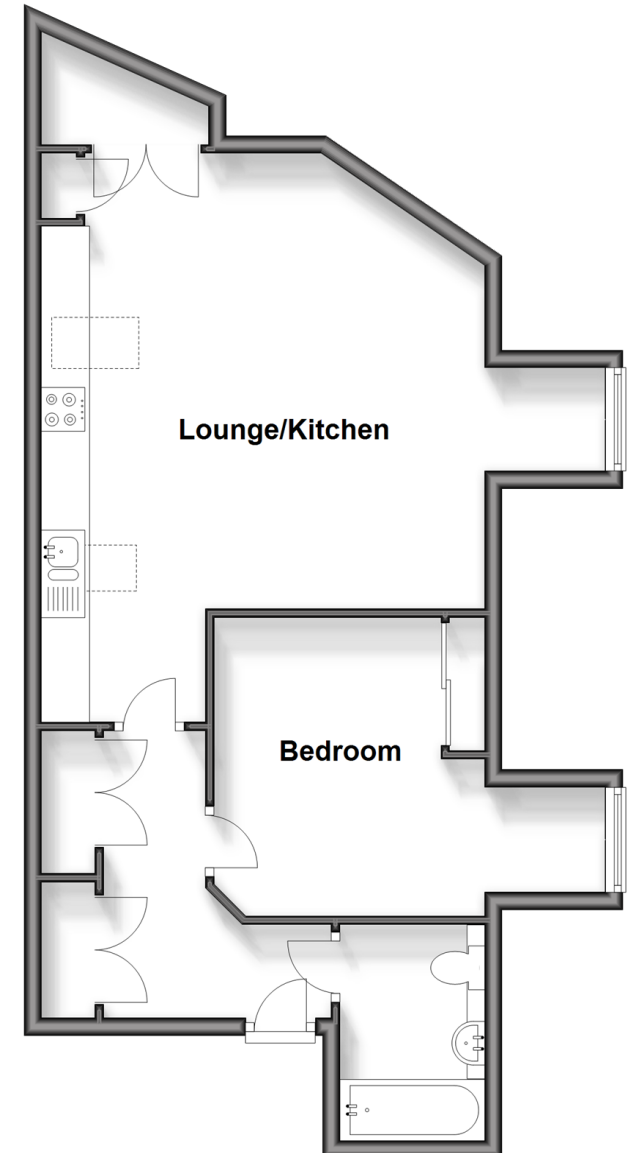
Bathroom: 8'0 x 5'7 (2.44m x 1.70m)

OUTSIDE

Allocated Parking
Communal Gardens

Second Floor

Approx. 56.6 sq. metres (609.3 sq. feet)



Call Arundel - 01903 884420 ■ cubittandwest.co.uk

- Legal advice should be taken to verify fixtures/fittings, planning, alterations and/or lease details
- Appliances & services are untested, dimensions are approximate and floor plans are not to scale
- Through a Homewise Home For Life Plan people aged 60+ can secure this property for up to 59% less, by purchasing a Lifetime Lease.



23217854/20240821/KF/DW