



Price
£400,000

Freehold

3x  1x  2x 

**Woodview, Arundel,
West Sussex, BN18**

OVER 60?

Secure this property
for up to **59% less!**

cubitt & west
Helping you move forwards



Main features

- Extended bright open plan living, kitchen/ dining space with modern kitchen and walk in utility room
- French doors to the rear secluded garden with sunny seating area and powered workshop
- Tastefully refitted bathroom with separate shower cubical
- Versatile study / bedroom 3

Accommodation

GROUND FLOOR

Hallway

Cloakroom

Lounge: 11'1 x 10'6 (3.38m x 3.20m)

Dining Room: 14'4 x 11'11 (4.37m x 3.63m)

Kitchen: 14'3 x 10'4 (4.35m x 3.15m)

Utility Room: 9'0 x 6'9 (2.75m x 2.06m)

Bedroom 3 / Study: 11'1 x 9'0 (3.38m x 2.75m)

FIRST FLOOR

Landing

Bedroom 1: 11'11 x 11'9 (3.63m x 3.58m)

Bedroom 2: 11'1 x 9'1 (3.38m x 2.77m)

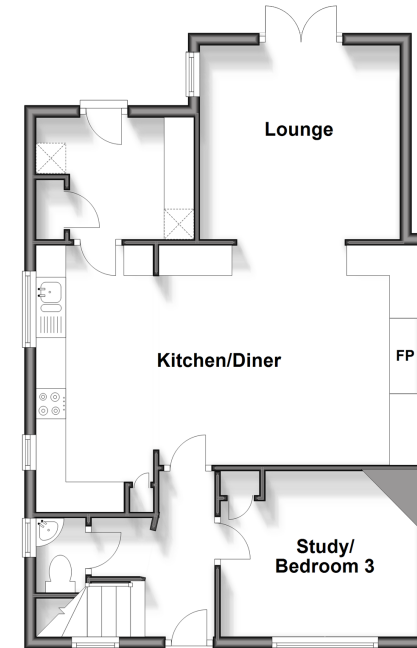
Bathroom: 8'5 x 8'4 (2.57m x 2.54m)

OUTSIDE

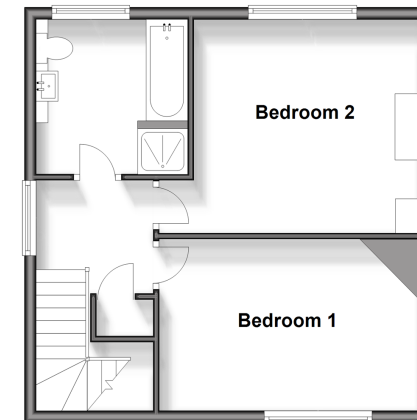
Front & Rear Gardens

Off Road Parking

Ground Floor
Approx. 58.9 sq. metres (633.7 sq. feet)



First Floor
Approx. 41.9 sq. metres (450.5 sq. feet)



Call Arundel - 01903 884420 ■ cubittandwest.co.uk

- The seller is a person connected with Cubitt & West as defined in the Estate Agents Act 1979
- If buying to let, the energy rating will need to be improved to at least 'E' rating before you can let the property
- Legal advice should be taken to verify fixtures/fittings, planning, alterations and/or lease details
- Appliances & services are untested, dimensions are approximate and floor plans are not to scale
- Through a Homewise Home For Life Plan people aged 60+ can secure this property for up to 59% less, by purchasing a Lifetime Lease.



23216914/20240819/KF/DW